

## Switching Regulator Series

# Step-Down DC/DC Converter

## BD9E102FJ Evaluation Board

BD9E102FJ-EVK-001

### Description

BD9E102FJ-EVK-001 Evaluation board delivers an output 5.0 volts from an input 7.2 to 26 volts using BD9E102FJ, a synchronous rectification step-down DC/DC converter integrated circuit, with output current rating of maximum 1A. It offers high efficiency in all load ranges by equipping the efficiency improvement function in light-load. The output voltage can be set by changing the external parts of circuit and the loop-response characteristics also can be adjusted by the phase compensation circuit.

### Performance specification (These are representative values, and it is not a guaranteed against the characteristics.)

 $V_{IN} = 24V$ ,  $V_{OUT} = 5.0V$ , Unless otherwise specified.

Parameter	Min	Typ	Max	Units	Conditions
Input Voltage Range	7.0 <sup>(NOTE1)</sup>		26	V	
Output Voltage		5.0		V	R4=430k $\Omega$ , R5=82k $\Omega$
Output Voltage Setting Range	$V_{IN} \times 0.143$ <sup>(NOTE2)</sup>		$V_{IN} \times 0.7$	V	
Output Current Range	0		1.0	A	
Loop Band Width		22.4		kHz	
Phase Margin		73.2		degrees	
Input Ripple Voltage		70		mVpp	$I_O = 1.0A$
Output Ripple Voltage		20		mVpp	$I_O = 1.0A$
Output Rising Time		3		ms	
Operating Frequency		570		kHz	
Maximum Efficiency		89.6		%	$I_O = 0.7A$

(NOTE1) When the output voltage is 5.0V, it is 7.2V by limiting ratio of the maximum duty.

(NOTE2) However,  $(V_{IN} \times 0.143) \geq 1.0V$

## Operation Procedures

### 1. Necessary equipments

- (1) DC power-supply of 7.0V to 26V/1A
- (2) Maximum 1A load
- (3) DC voltmeter

### 2. Connecting the equipments

- (1) DC power-supply presets to 24V and then the power output turns off.
- (2) The max. load should be set at 1A and over it will be disabled.
- (3) Check Jumper pin of SW1 is short, between intermediate-terminal and OFF-side terminal.
- (4) Connect positive-terminal of power-supply to VIN+terminal and negative-terminal to GND-terminal with a pair of wires.
- (5) Connect load's positive-terminal to VOUT+terminal and negative-terminal to GND-terminal with a pair of wires.
- (6) Connect positive-terminal of DC voltmeter 1 to TP1 and negative-terminal to TP2 for input-voltage measurement.
- (7) Connect positive-terminal of DC voltmeter 2 to TP6 and negative-terminal to TP7 for output-voltage measurement.
- (8) DC power-supply output is turned ON.
- (9) The load is enabled.
- (10) IC is enable (EN) by shorting Jumper-pin of SW1 between intermediate-terminal and ON-side terminal.
- (11) Check DC voltmeter 2 displays 5.0V.
- (12) Check at DC voltmeter 1 whether the voltage-drop (loss) is not caused by the wire's resistance.

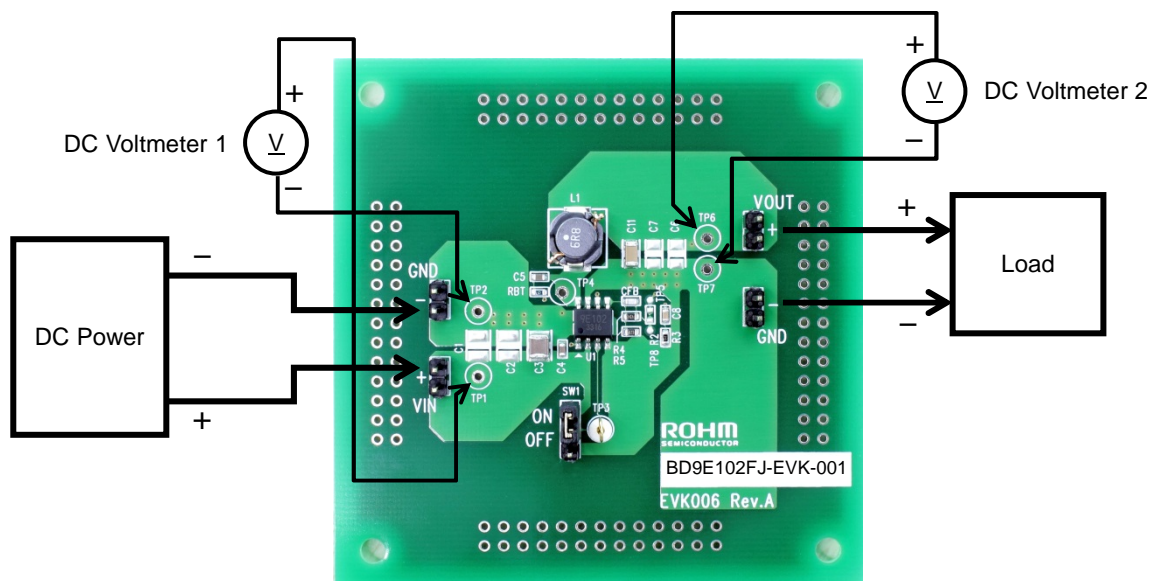


Figure 1. Connection Diagram

### Enable-Pin

To minimize current consumption during standby-mode and normal operation, Enable-mode can be switched by controlling EN pin(3rd pin) of the IC. Standby-mode is enabled by shorting Jumper-pin of SW1 between intermediate-terminal and OFF-side terminal and normal-mode operation by shorting between intermediate-terminal and ON-side terminal.

It also can be swithed between standby-mode and normal-mode operation by removing Jumper-pin and controlling the voltage between TP3 and GND-terminal. Standby-mode is enabled when the voltage of TP3 is under 0.8V, and normal-mode operation when it is over 2.0V.

## Circuit Diagram

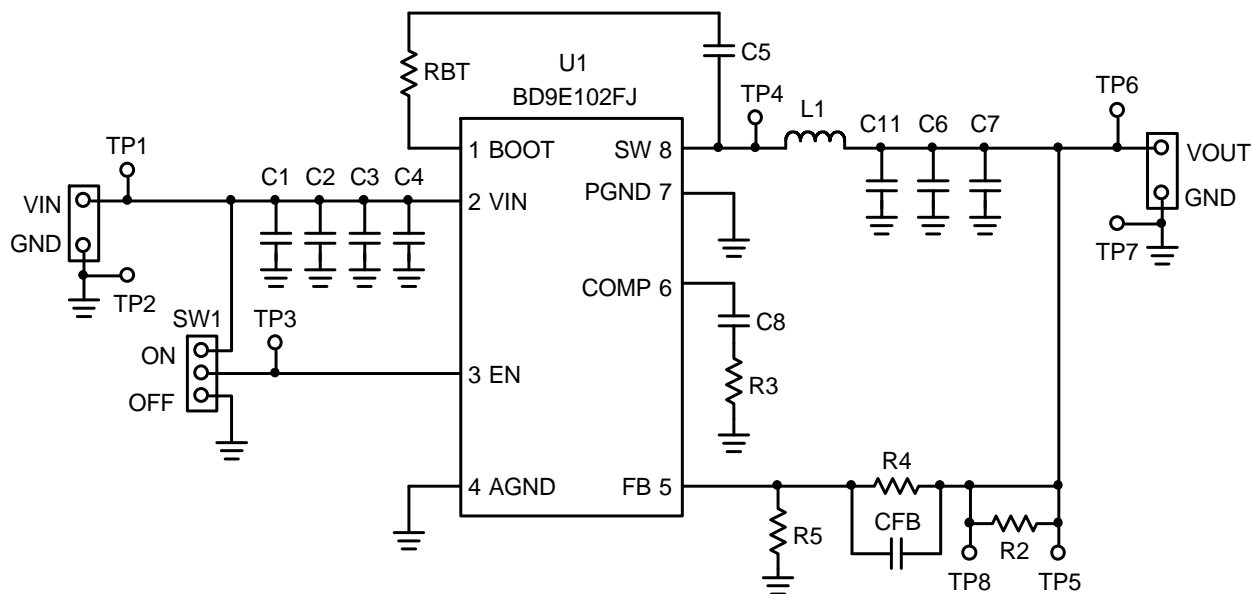
 $V_{IN} = 7.2V \text{ to } 26V, V_{OUT} = 5.0V$ 


Figure 2. BD9E102FJ-EVK-001 Circuit Diagram

## Bill of Materials

Count	Reference Designator	Type	Value	Description	Manufacturer Part Number	Manufacturer	Configuration (mm)
0	C1, C2	Ceramic Capacitor	-	Not installed	-	-	3225
1	C3	Ceramic Capacitor	10 $\mu$ F	35V, B, $\pm$ 10%	GRM32EB3YA106KA12	MURATA	3225
2	C4, C5	Ceramic Capacitor	0.1 $\mu$ F	50V, B, $\pm$ 20%	GRM188B31H104MA92	MURATA	1608
0	C6, C7	Ceramic Capacitor	-	Not installed	-	-	3216
1	C8	Ceramic Capacitor	2200pF	25V, B, $\pm$ 20%	GRM188B11E222MA01	MURATA	1608
1	C11	Ceramic Capacitor	22 $\mu$ F	10V, B, $\pm$ 20%	GRM31CB31A226ME19	MURATA	3216
1	CFB	Ceramic Capacitor	33pF	50V, CH, $\pm$ 5%	GRM1882C1H330JA01	MURATA	1608
1	L1	Inductor	6.8 $\mu$ H	$\pm$ 30%, DCR=35.1m $\Omega$ max, 3.3A	CLF7045T-6R8N	TDK	7269
0	R2	Resistor	-	Not installed	-	-	1608
1	R3	Resistor	24k $\Omega$	1/10W, 50V, 1%	MCR03ERPFP2402	ROHM	1608
1	R4	Resistor	430k $\Omega$	1/10W, 50V, 1%	MCR03ERPFP4303	ROHM	1608
1	R5	Resistor	82k $\Omega$	1/10W, 50V, 1%	MCR03ERPFP8202	ROHM	1608
1	RBT	Resistor	0 $\Omega$	Jumper	MCR03ERPJ000	ROHM	1608
1	SW1	Pin header	-	2.54mm $\times$ 3 contacts	PH-1x03SG	USECONN	-
1	TP3	Terminal	-	Terminal	LC-22-G-WHITE	MAC8	-
1	U1	IC	-	Buck DC/DC Converter	BD9E102FJ	ROHM	SOP-J8
4	VIN, GND, VOUT, GND	Pin header	-	2.54mm $\times$ 2 contacts	PH-1x02SG	USECONN	-
1	-	Jumper	-	Jumper pin for SW1	MJ254-6BK	USECONN	-

## Layout

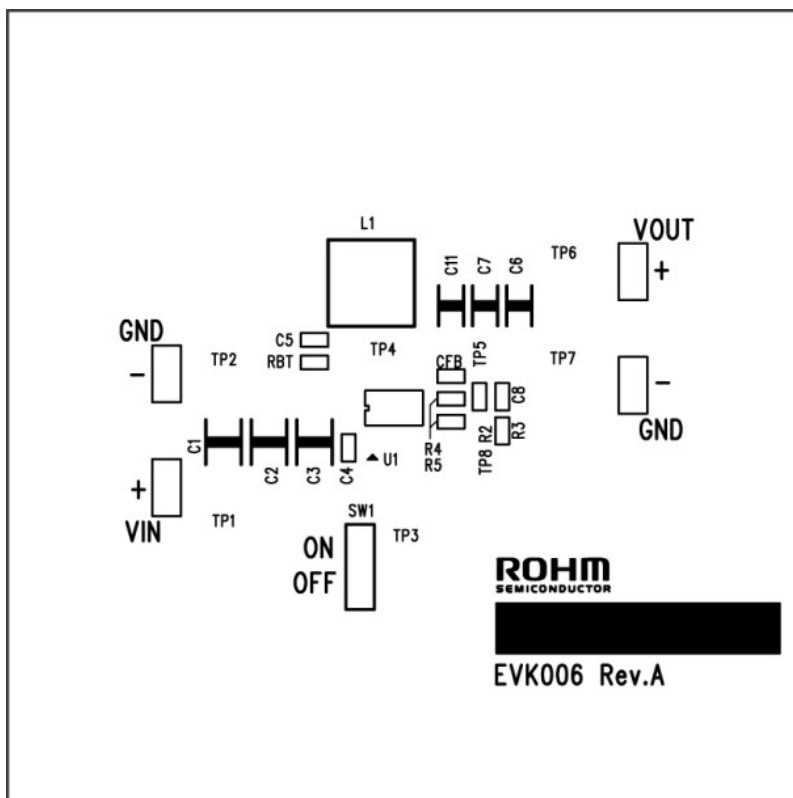


Figure 3. Top Silk Screen (Top view)

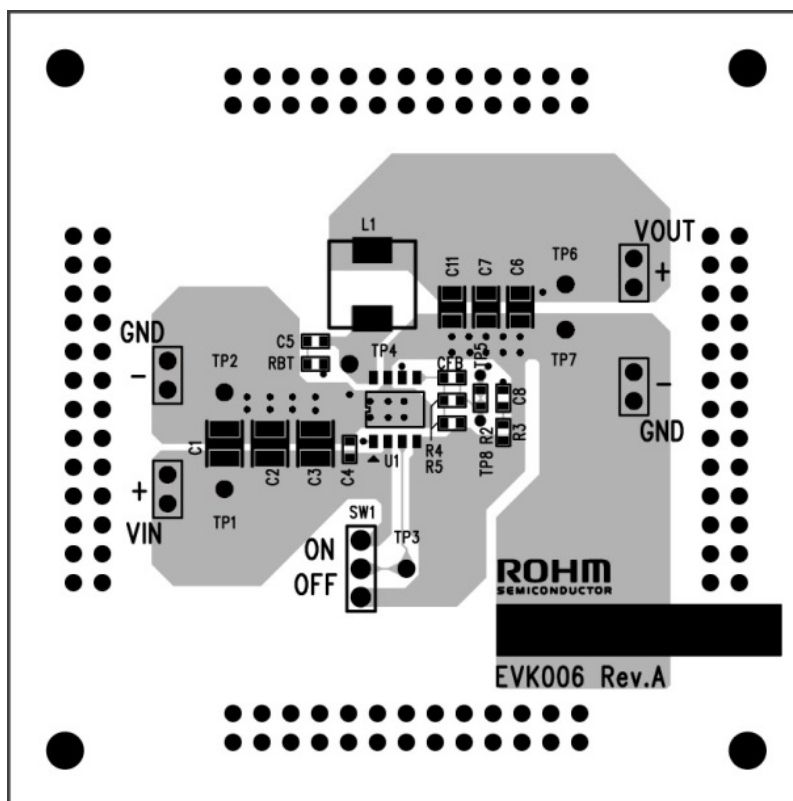


Figure 4. Top Silk Screen and Layout (Top view)

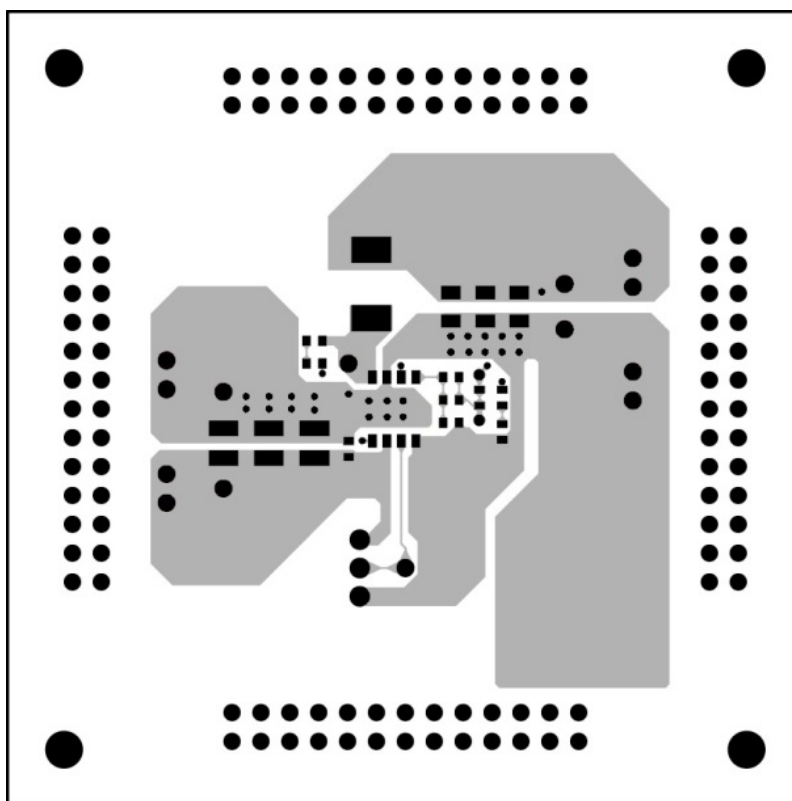


Figure 5. Top Side Layout (Top view)

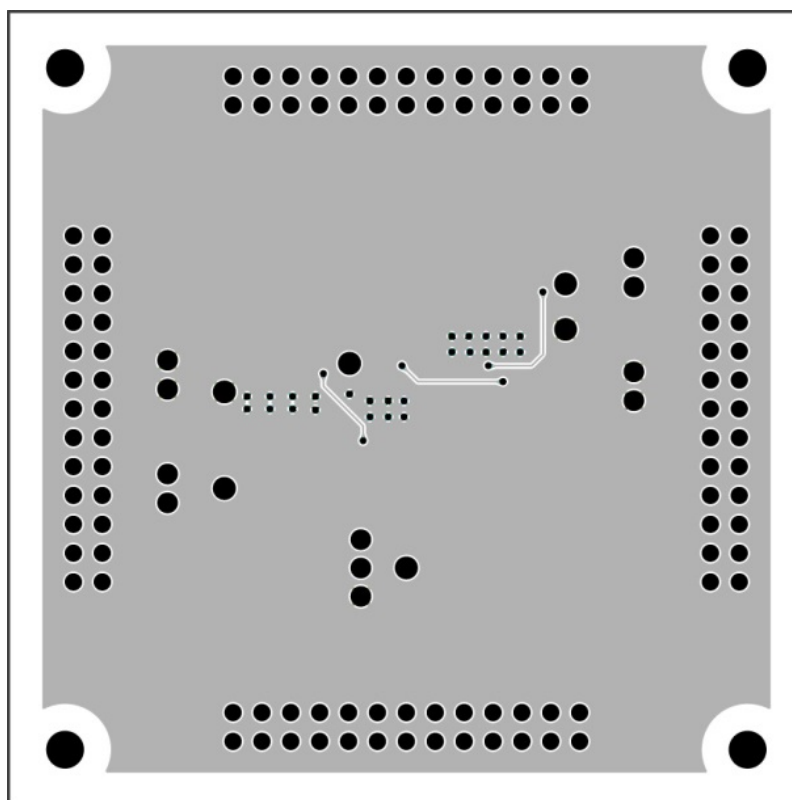


Figure 6. Bottom Side Layout (Top view)

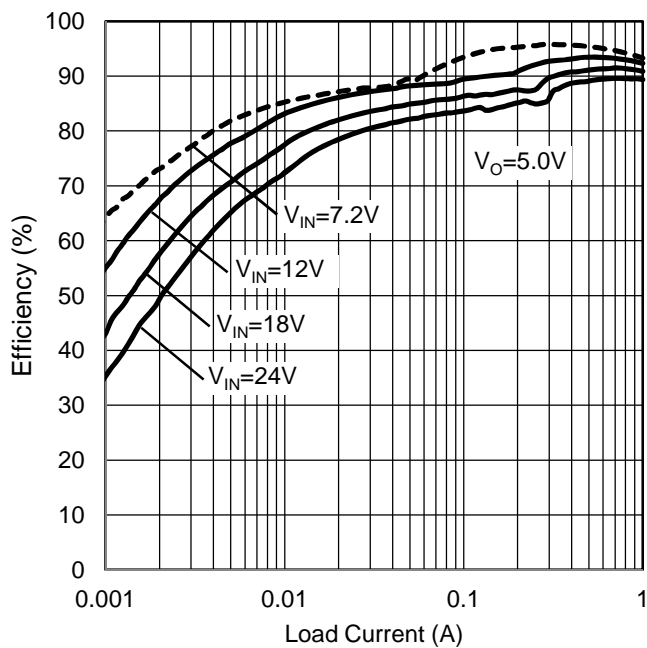


Figure 7. Efficiency vs Load Current

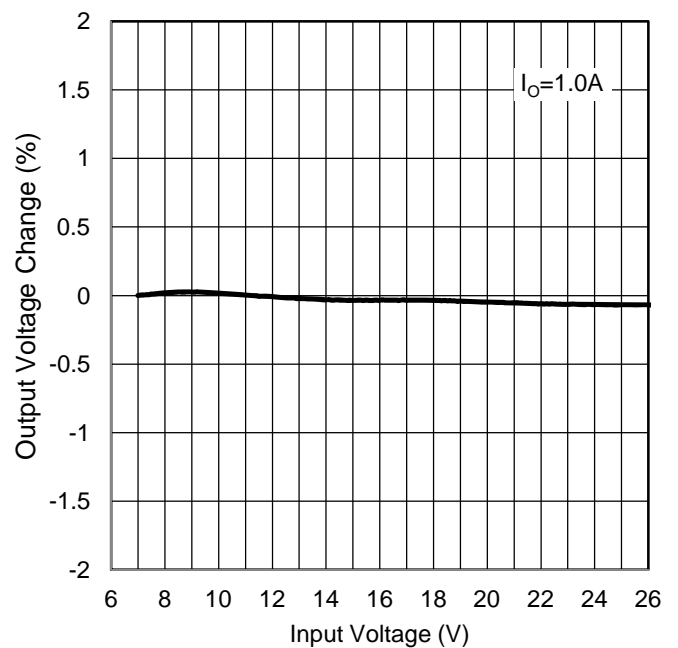


Figure 8. Line Regulation

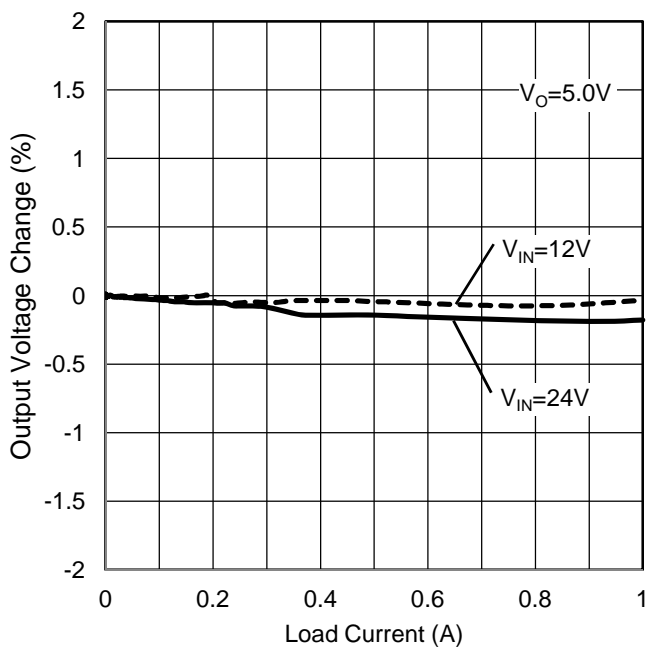


Figure 9. Load Regulation

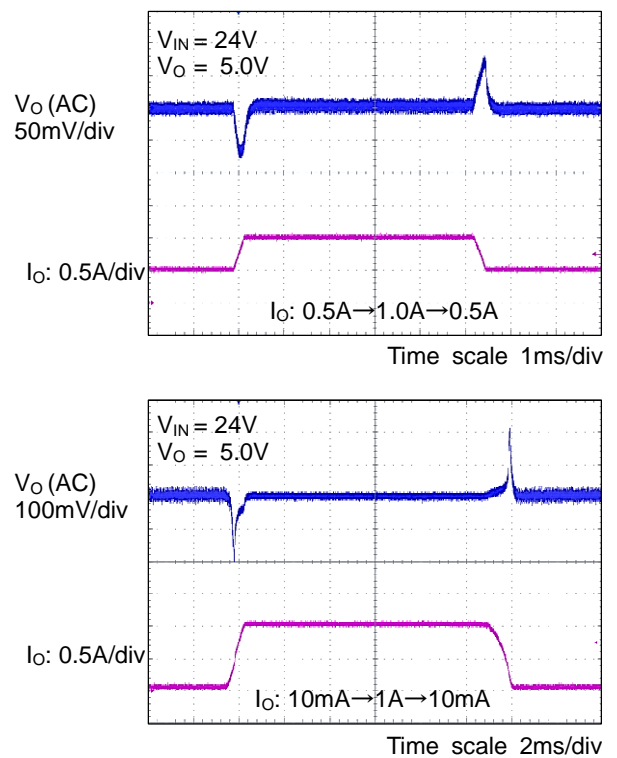
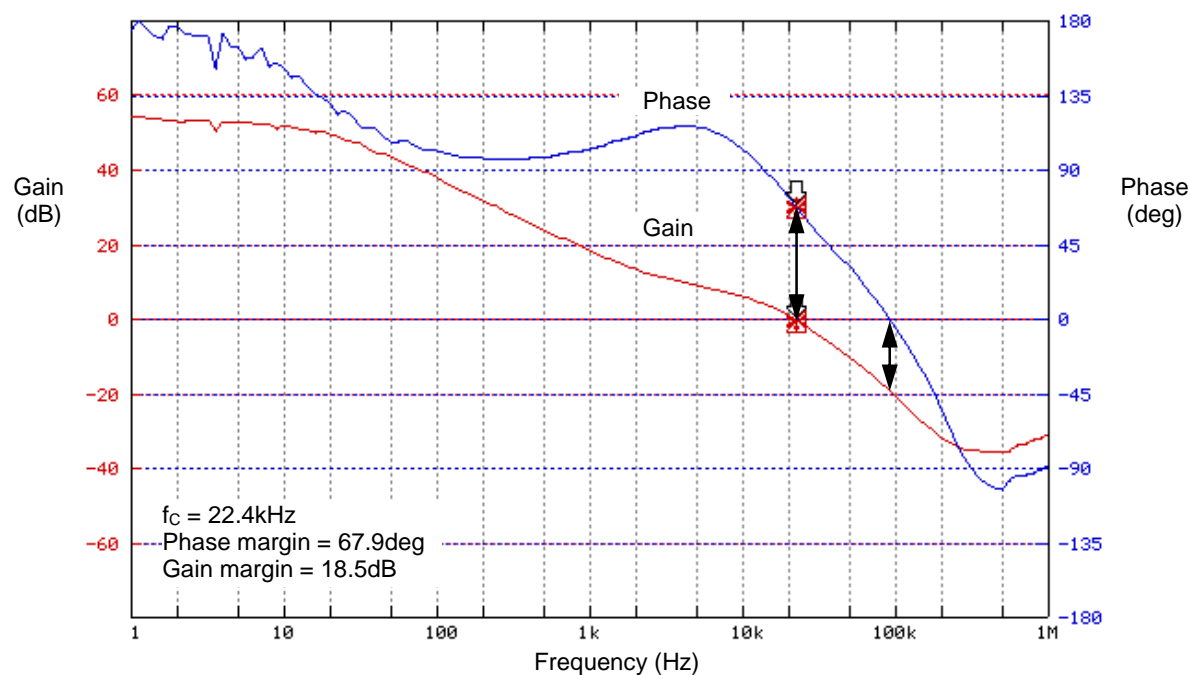
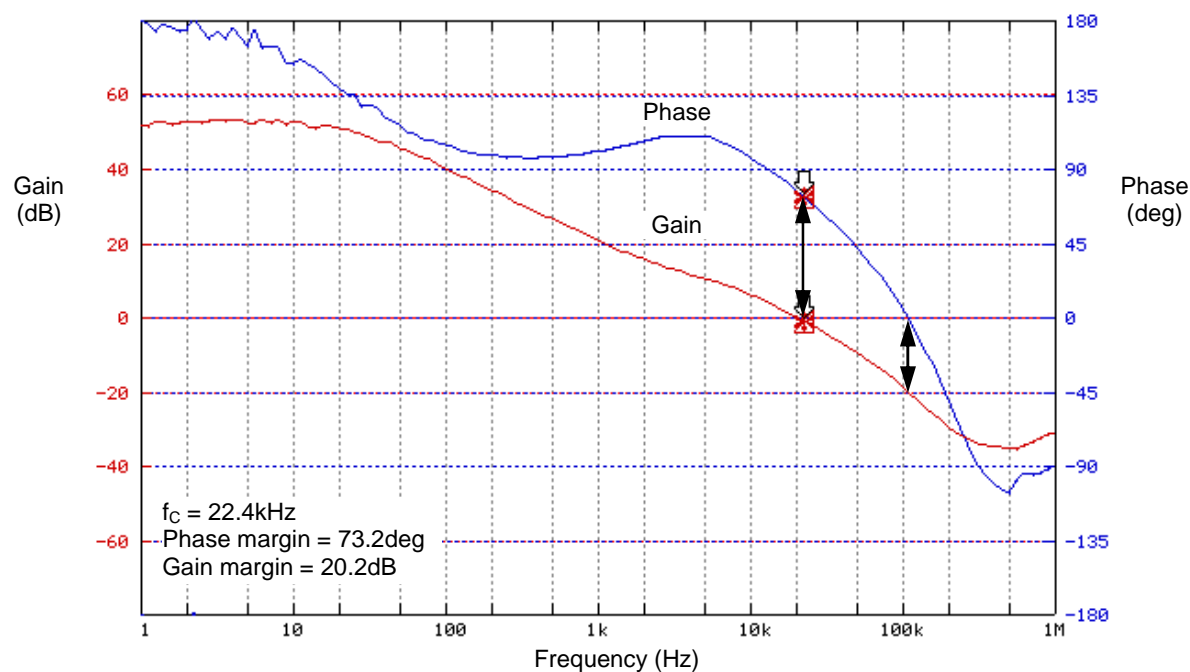


Figure 10. Load Transient Characteristics

Figure 11. Loop Response  $V_{IN} = 12\text{V}$ ,  $V_O = 5.0\text{V}$ Figure 12. Loop Response  $V_{IN} = 24\text{V}$ ,  $V_O = 5.0\text{V}$

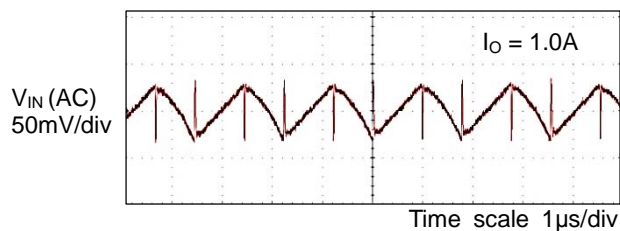
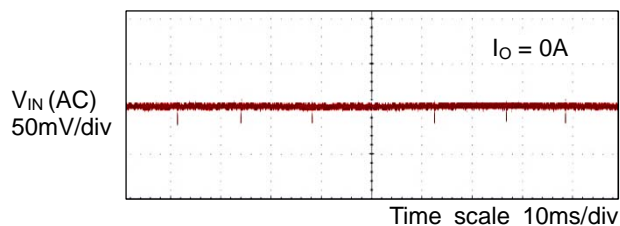


Figure 13. Input Voltage Ripple Wave  
 $V_{IN} = 12V$ ,  $V_O = 5.0V$

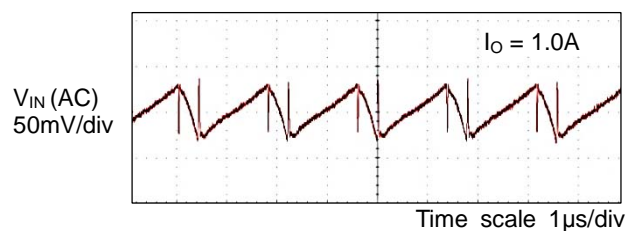
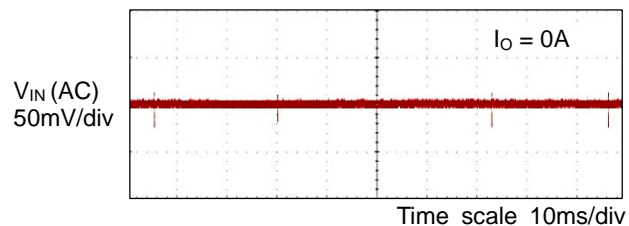


Figure 14. Input Voltage Ripple Wave  
 $V_{IN} = 24V$ ,  $V_O = 5.0V$

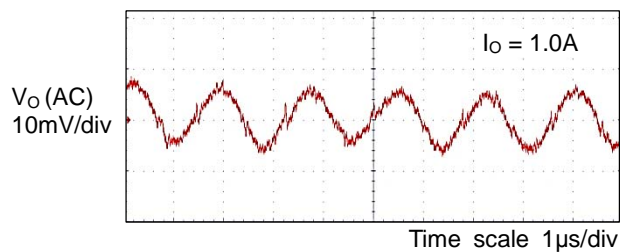
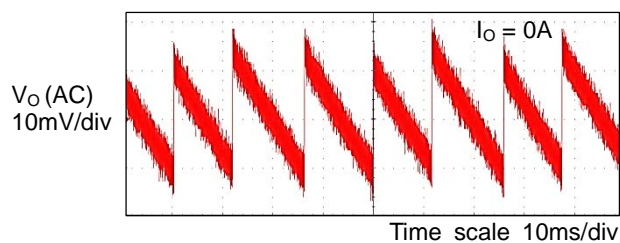


Figure 15. Output Voltage Ripple Wave  
 $V_{IN} = 12V$ ,  $V_O = 5.0V$

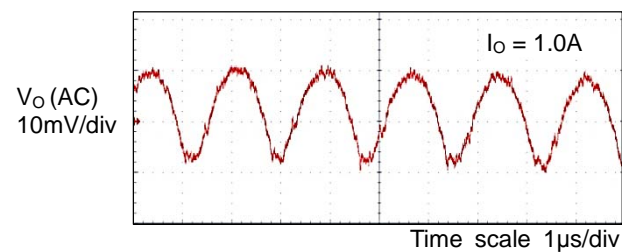
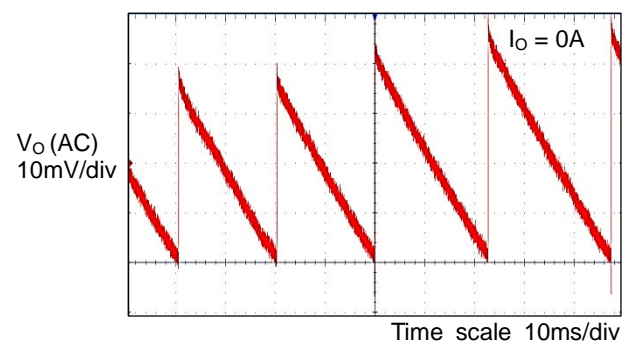


Figure 16. Output Voltage Ripple Wave  
 $V_{IN} = 24V$ ,  $V_O = 5.0V$



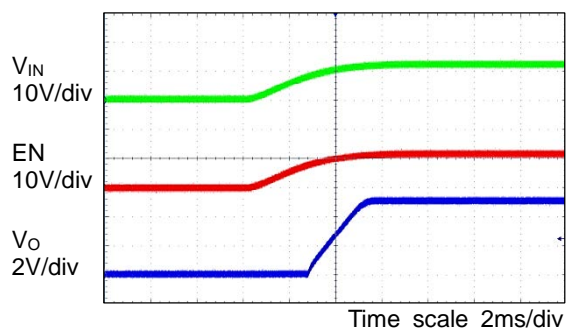


Figure 17. Start-up EN =  $V_{IN}$   
 $V_{IN} = 12V$ ,  $V_O = 5.0V$ ,  $I_O = 0A$

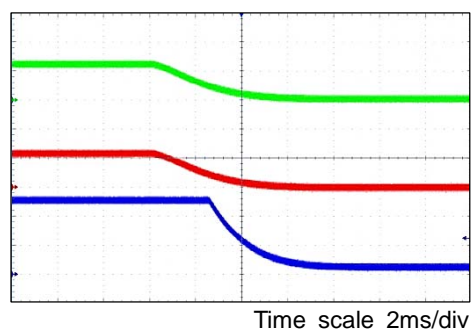


Figure 18. Power-down EN =  $V_{IN}$   
 $V_{IN} = 12V$ ,  $V_O = 5.0V$ ,  $I_O = 0A$

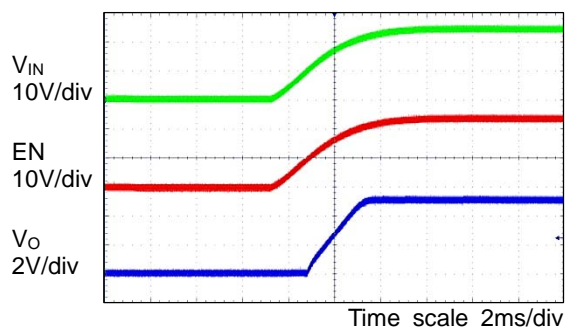


Figure 19. Start-up EN =  $V_{IN}$   
 $V_{IN} = 24V$ ,  $V_O = 5.0V$ ,  $I_O = 0A$

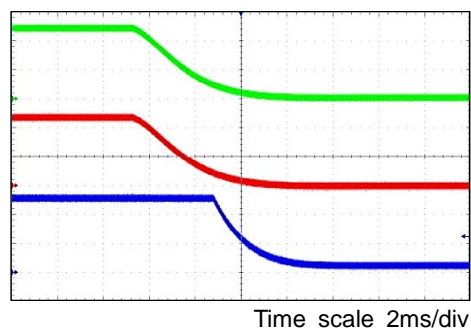


Figure 20. Power-down EN =  $V_{IN}$   
 $V_{IN} = 24V$ ,  $V_O = 5.0V$ ,  $I_O = 0A$

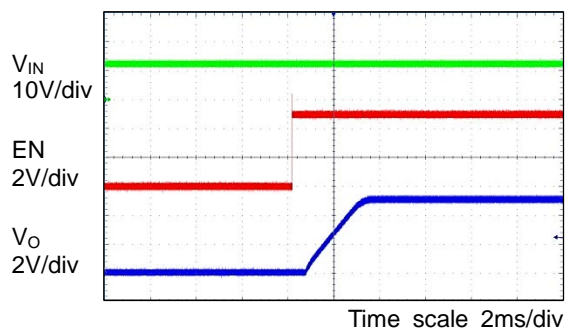


Figure 21. Start-up by EN  
 $V_{IN} = 12V$ ,  $V_O = 5.0V$ ,  $I_O = 0A$

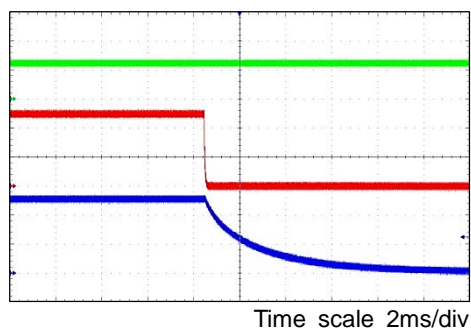


Figure 22. Power-down by EN  
 $V_{IN} = 12V$ ,  $V_O = 5.0V$ ,  $I_O = 0A$

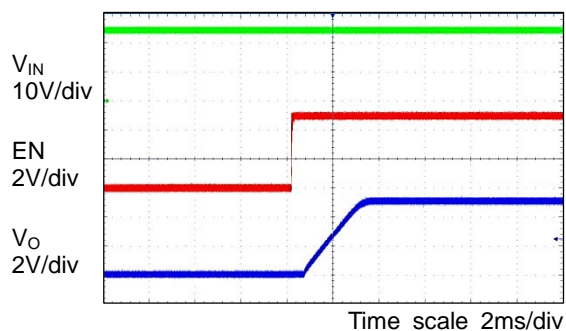


Figure 23. Start-up by EN  
 $V_{IN} = 24V$ ,  $V_O = 5.0V$ ,  $I_O = 0A$

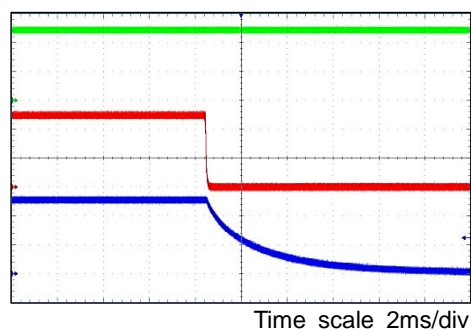


Figure 24. Power-down by EN  
 $V_{IN} = 24V$ ,  $V_O = 5.0V$ ,  $I_O = 0A$

## Notes

- 1) The information contained herein is subject to change without notice.
- 2) Before you use our Products, please contact our sales representative and verify the latest specifications :
- 3) Although ROHM is continuously working to improve product reliability and quality, semiconductors can break down and malfunction due to various factors.  
Therefore, in order to prevent personal injury or fire arising from failure, please take safety measures such as complying with the derating characteristics, implementing redundant and fire prevention designs, and utilizing backups and fail-safe procedures. ROHM shall have no responsibility for any damages arising out of the use of our Products beyond the rating specified by ROHM.
- 4) Examples of application circuits, circuit constants and any other information contained herein are provided only to illustrate the standard usage and operations of the Products. The peripheral conditions must be taken into account when designing circuits for mass production.
- 5) The technical information specified herein is intended only to show the typical functions of and examples of application circuits for the Products. ROHM does not grant you, explicitly or implicitly, any license to use or exercise intellectual property or other rights held by ROHM or any other parties. ROHM shall have no responsibility whatsoever for any dispute arising out of the use of such technical information.
- 6) The Products are intended for use in general electronic equipment (i.e. AV/OA devices, communication, consumer systems, gaming/entertainment sets) as well as the applications indicated in this document.
- 7) The Products specified in this document are not designed to be radiation tolerant.
- 8) For use of our Products in applications requiring a high degree of reliability (as exemplified below), please contact and consult with a ROHM representative : transportation equipment (i.e. cars, ships, trains), primary communication equipment, traffic lights, fire/crime prevention, safety equipment, medical systems, servers, solar cells, and power transmission systems.
- 9) Do not use our Products in applications requiring extremely high reliability, such as aerospace equipment, nuclear power control systems, and submarine repeaters.
- 10) ROHM shall have no responsibility for any damages or injury arising from non-compliance with the recommended usage conditions and specifications contained herein.
- 11) ROHM has used reasonable care to ensure the accuracy of the information contained in this document. However, ROHM does not warrant that such information is error-free, and ROHM shall have no responsibility for any damages arising from any inaccuracy or misprint of such information.
- 12) Please use the Products in accordance with any applicable environmental laws and regulations, such as the RoHS Directive. For more details, including RoHS compatibility, please contact a ROHM sales office. ROHM shall have no responsibility for any damages or losses resulting from non-compliance with any applicable laws or regulations.
- 13) When providing our Products and technologies contained in this document to other countries, you must abide by the procedures and provisions stipulated in all applicable export laws and regulations, including without limitation the US Export Administration Regulations and the Foreign Exchange and Foreign Trade Act.
- 14) This document, in part or in whole, may not be reprinted or reproduced without prior consent of ROHM.



Thank you for your accessing to ROHM product informations.  
More detail product informations and catalogs are available, please contact us.

## ROHM Customer Support System

<http://www.rohm.com/contact/>