

Primary Buck DC/DC Converter Series

Single 2.2 MHz Buck DC/DC Converter For Automotive BD9P1x5EFV-C series Evaluation Board

BD9P1x5EFV-TSB-001 (3.5 V to 40 V Input, 1 A)

Introduction

This user's guide will provide the necessary steps to operate the Evaluation Board of ROHM's BD9P1x5EFV-C Buck DC/DC converter. This includes the external parts, operating procedures and application data.

Description

This Evaluation Board was developed for ROHM's single 2.2MHz buck DC/DC converter BD9P1x5EFV-C. BD9P1x5EFV-C Series are current mode synchronous buck DC/DC converter integrating POWER MOSFETs. The BD9P1x5EFV-C series accepts a power supply input range of 3.5V to 40V and generates a maximum output current of 1A. BD9P105EFV-C generates an output voltage range of 0.8V to 8.5V using external resistors, BD9P135EFV-C generates a fixed output voltage of 3.3V, and BD9P155EFV-C generates a fixed output voltage of 5.0V.

Application

Automotive Powered Supplies

Consumer Powered Supplies

Recommended Operating Conditions

Table 1. Recommended Operating Conditions

Parameter	Min	Typ	Max	Units	Conditions
Input Voltage	3.5	-	40	V	Initial startup is 4.0V or more
Output Voltage for BD9P105EFV-C (Note1)	0.8	-	8.5	V	
Output Voltage for BD9P135EFV-C	-	3.3	-	V	
Output Voltage for BD9P155EFV-C	-	5.5	-	V	
Output Current Range	-	-	1.0	A	OCP_SEL=H: 1.0A (Max) OCP_SEL=L: 0.5A (Max)
Switching Frequency	-	2.2	-	MHz	
Maximum Efficiency(BD9P135EFV-C)	-	86.2	-	%	VIN=12V, Io=0.5A, Ta=25°C
Maximum Efficiency(BD9P155EFV-C)		91.7		%	VIN=12V, Io=0.5A, Ta=25°C

(Note 1) Although the minimum output voltage is configurable up to 0.8 V, it may be limited by the SW min ON pulse width.

For the same reason, although the maximum output voltage is configurable up to 8.5 V, it may be limited by the SW minimum OFF pulse width.

Evaluation Board

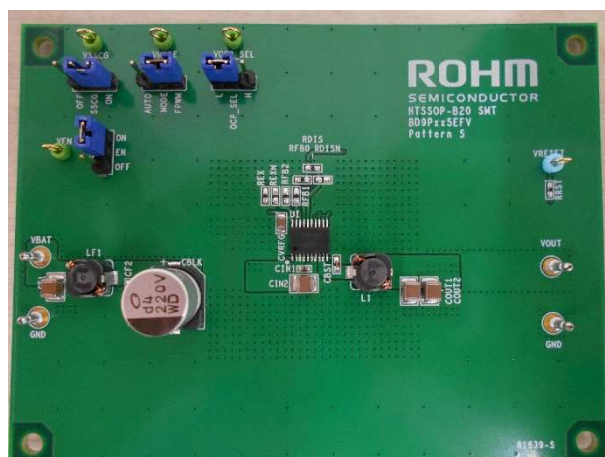


Figure 1. BD9P1x5EFV-C (Top View)

Evaluation Board Schematic

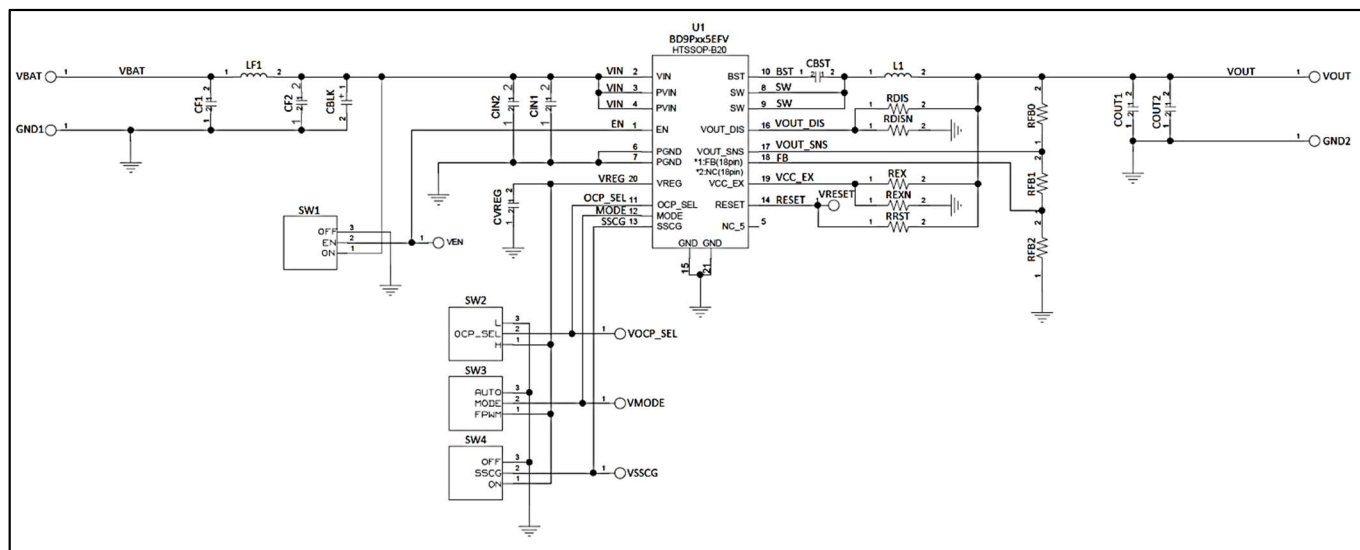


Figure 2. BD9P1x5EFV-C Circuit Diagram

Operating Procedure

1. Turn off EN and connect the GND terminal of the power supply to the GND terminal of Evaluation Board.
2. Connect VCC pin of power supply to the VBAT pin of the Evaluation Board.
3. Connect the load to the Evaluation Board's VOUT and GND terminals. When using an electronic load, connect with the load turned off.
4. Connect a voltmeter to the Evaluation Board's VOUT and GND terminals.
5. Turn on the Power supply of VBAT. Turn ON the switch of EN terminal.
6. Make sure that the voltmeter is set to measure voltage.
7. Turn on the electronic load.

(Caution) This Evaluation Board does not support hot plug. Do not perform hot plug test.

(Note) If EN=High (EN short to VIN) before Power ON, the turn ON and turn OFF is controlled by VBAT only.

Operation Mode Settings

Below is a table of BD9P1x5EFV-C operation modes selectable using OCP_SEL, MODE and SSCG terminals.

Table 2. Mode Settings

Terminal	Setting	Operation Mode	Function
OCP_SEL	HIGH	OCP threshold selection	OCP threshold is set to 1.250A (Typ.) Output Current maximum is 1A.
	LOW		OCP threshold is set to 0.625A (Typ.) Output Current maximum is 0.5A.
MODE	HIGH	FPWM	Forced PWM mode
	LOW or OPEN	AUTO	Automatically switched between PWM and LLM mode.
	Apply a clock to this pin	SYNC	Activate synchronization mode
SSCG	ON (HIGH)	Select Spread Spectrum function	Enable Spread Spectrum
	OFF (LOW)		Disable Spread Spectrum

(Note) If setting is High, the terminal is shorted to VREG, and if setting is Low, the terminal is shorted to GND.

Pin Configuration

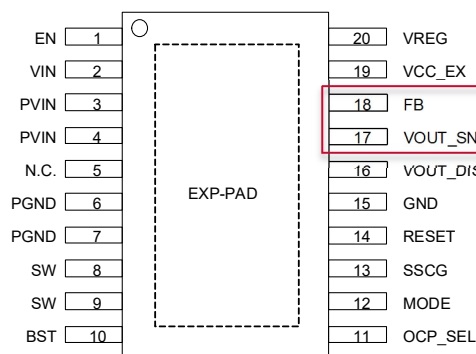


Figure 3. Pin Configuration (BD9P105EFV-C)

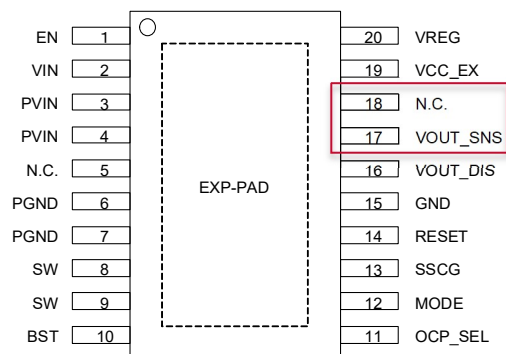


Figure 4. Pin Configuration (BD9P135EFV-C, BD9P155EFV-C)

Pin Description of difference with BD9P105EFV-C and BD9P135EFV-C/BD9P155EFV-C

Table 3. Pin Description

Pin No.	Pin Name	function
17 (BD9P105EFV-C)	VOUT_SNS	Pin to define the clamp voltage of GmAmp2 output and phase compensation. Connect this pin to the output voltage.
17 (BD9P135EFV-C, BD9P155EFV-C)		Inverting input node of the GmAmp1. This pin is used for OVP, SCP and RESET detection. And, this pin is used for defining the clamp voltage of GmAmp2 output and phase compensation. Connect this pin to the output voltage.
18 (BD9P105EFV-C)	FB	Inverting input node of the GmAmp1. This pin is used for OVP, SCP and RESET detection. Connect output voltage divider to this pin to set the output voltage.
18 (BD9P135EFV-C, BD9P155EFV-C)	N.C.	This pin is not connected to the chip. Use this as open. If this pin is used other than open and adjacent pins are expected to be shorted, please confirm if there is any problem with the actual application.

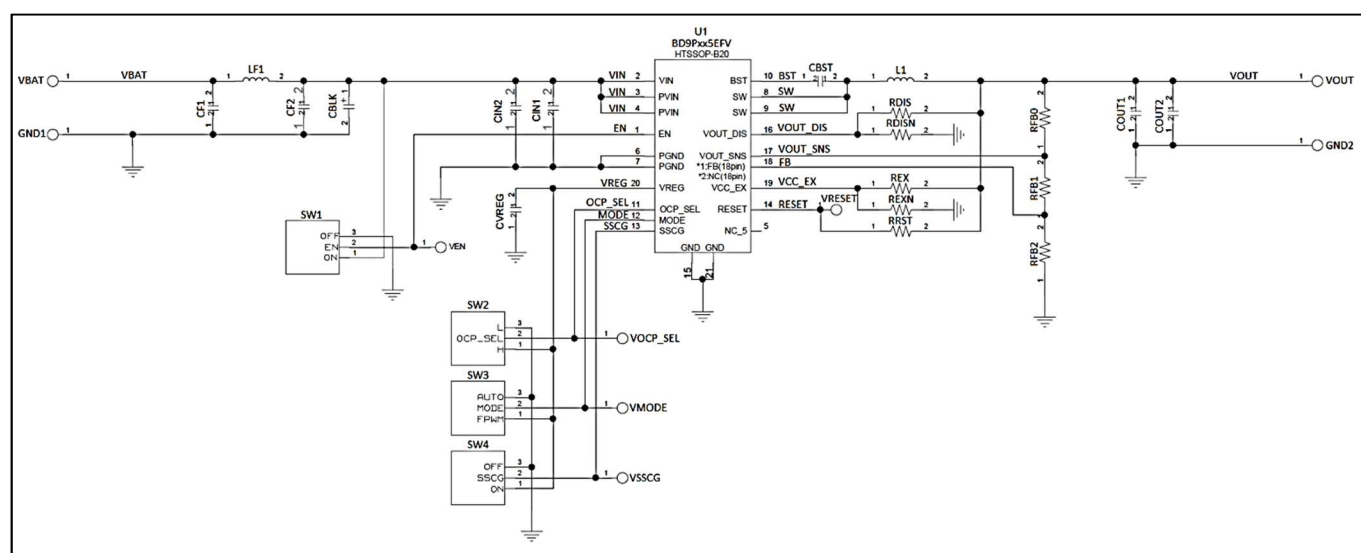


Figure 5. BD9P1x5EFV-C Circuit Diagram

Table 4. PCB Terminal Description

PCB terminal	BD9P105EFV-C	BD9P135EFV-C BD9P155EFV-C
17. VOUT_SNS	VOUT_SNS	VOUT_SNS
18. FB / N.C.	FB / N.C.	FB / N.C.

Pin18 of BD9P105EFV-C and BD9P135EFV-C/BD9P155EFV-C are different terminals, but have the same layout pattern in the PCB board. Please refer to the table above for the configuration of these pin terminals for each IC.

Parts list (BD9P135EFV-C, BD9P155EFV-C)

Table 5. BD9P135EFV-C (3.3V, 1.0A) / BD9P155EFV-C (5.0V, 1.0A) Parts list

	Part No	Value	PKG(inch)	PKG(mm)	Manufacturer	Part Name(Series)
π type filter	CF1	4.7 μ F	1210	3225	Murata	GCM32ER71H475K
	LF1	2.2 μ H	2524h18	6360h45	TDK	CLF6045NIT-2R2N-D
	CF2	0.1 μ F	0402	1005	Murata	GCM155R71H104K
	CBLK	220 μ F	0404h04	1010h10	Nichicon	UWD1V221MCQ1GS
Basic	CIN2	4.7 μ F	1210	3225	Murata	GCM32ER71H475K
	CIN1	0.1 μ F	0402	1005	Murata	GCM155R71H104K
	CVREG	1 μ F	0805	2012	Murata	GCM21BR71C105K
	CBST	0.1 μ F	0402	1005	Murata	GCM155R71H104K
	RRST	10k Ω	0603	1608	ROHM	MCR03 Series
Application	L1	4.7 μ H	2524h18	6360h45	TDK	CLF6045NIT-4R7N-D
	COUT1(Note2)	22 μ F	1210	3225	Murata	GCM32ER71A226K
	COUT2(Note2)	Open	-	-	-	-
	RFB0	0 Ω	0603	1608	ROHM	MCR03 Series
	RFB1	Open	-	-	-	-
	RFB2	Open	-	-	-	-
	RDIS	0 Ω	0603	1608	ROHM	MCR03 Series
	RDISN	Open	-	-	-	-
	REX(Note2)	0 Ω	0603	1608	ROHM	MCR03 Series
	REXN(Note2)	Open	-	-	-	-

Parts list (BD9P105EFV-C)

Table 6. BD9P105EFV-C (1.3V, 1.0A) Parts list

	Part No	Value	PKG(inch)	PKG(mm)	Manufacturer	Part Name(Series)
π type filter	CF1	4.7 μ F	1210	3225	Murata	GCM32ER71H475K
	LF1	2.2 μ H	2524h18	6360h45	TDK	CLF6045NIT-2R2N-D
	CF2	0.1 μ F	0402	1005	Murata	GCM155R71H104K
	CBLK	220 μ F	0404h04	1010h10	Nichicon	UWD1V221MCQ1GS
Basic	CIN2	4.7 μ F	1210	3225	Murata	GCM32ER71H475K
	CIN1	0.1 μ F	0402	1005	Murata	GCM155R71H104K
	CVREG	1 μ F	0805	2012	Murata	GCM21BR71C105K
	CBST	0.1 μ F	0402	1005	Murata	GCM155R71H104K
	RRST	10k Ω	0603	1608	ROHM	MCR03 Series
Application	L1	4.7 μ H	2524h18	6360h45	TDK	CLF6045NIT-4R7N-D
	COUT1(Note2)	22 μ Fx2pcs	1210	3225	Murata	GCM32ER71A226K
	COUT2(Note2)	22 μ F	1210	3225	Murata	GCM32ER71A226K
	RFB0	0 Ω	0603	1608	ROHM	MCR03 Series
	RFB1	15k Ω	0603	1608	ROHM	MCR03 Series
	RFB2	24k Ω	0603	1608	ROHM	MCR03 Series
	RDIS	0 Ω	0603	1608	ROHM	MCR03 Series
	RDISN	Open	-	-	-	-
	REX(Note2)	Open	-	-	-	-
	REXN(Note2)	0 Ω	0603	1608	ROHM	MCR03 Series

Table 7. BD9P105EFV-C (3.3V, 1.0A) Parts list

	Part No	Value	PKG(inch)	PKG(mm)	Manufacturer	Part Name(Series)
π type filter	CF1	4.7 μ F	1210	3225	Murata	GCM32ER71H475K
	LF1	2.2 μ H	2524h18	6360h45	TDK	CLF6045NIT-2R2N-D
	CF2	0.1 μ F	0402	1005	Murata	GCM155R71H104K
	CBLK	220 μ F	0404h04	1010h10	Nichicon	UWD1V221MCQ1GS
Basic	CIN2	4.7 μ F	1210	3225	Murata	GCM32ER71H475K
	CIN1	0.1 μ F	0402	1005	Murata	GCM155R71H104K
	CVREG	1 μ F	0805	2012	Murata	GCM21BR71C105K
	CBST	0.1 μ F	0402	1005	Murata	GCM155R71H104K
	RRST	10k Ω	0603	1608	ROHM	MCR03 Series
Application	L1	4.7 μ H	2524h18	6360h45	TDK	CLF6045NIT-4R7N-D
	COUT1(Note2)	22 μ F	1210	3225	Murata	GCM32ER71A226K
	COUT2(Note2)	Open	-	-	-	-
	RFB0	0 Ω	0603	1608	ROHM	MCR03 Series
	RFB1	75k Ω	0603	1608	ROHM	MCR03 Series
	RFB2	24k Ω	0603	1608	ROHM	MCR03 Series
	RDIS	0 Ω	0603	1608	ROHM	MCR03 Series
	RDISN	Open	-	-	-	-
	REX(Note2)	0 Ω	0603	1608	ROHM	MCR03 Series
	REXN(Note2)	Open	-	-	-	-

Table 8. BD9P105EFV-C (5.0V, 1.0A) Parts list

	Part No	Value	PKG(inch)	PKG(mm)	Manufacturer	Part Name(Series)
π type filter	CF1	4.7 μ F	1210	3225	Murata	GCM32ER71H475K
	LF1	2.2 μ H	2524h18	6360h45	TDK	CLF6045NIT-2R2N-D
	CF2	0.1 μ F	0402	1005	Murata	GCM155R71H104K
	CBLK	220 μ F	0404h04	1010h10	Nichicon	UWD1V221MCQ1GS
Basic	CIN2	4.7 μ F	1210	3225	Murata	GCM32ER71H475K
	CIN1	0.1 μ F	0402	1005	Murata	GCM155R71H104K
	CVREG	1 μ F	0805	2012	Murata	GCM21BR71C105K
	CBST	0.1 μ F	0402	1005	Murata	GCM155R71H104K
	RRST	10k Ω	0603	1608	ROHM	MCR03 Series
Application	L1	4.7 μ H	2524h18	6360h45	TDK	CLF6045NIT-4R7N-D
	COUT1(Note2)	22 μ F	1210	3225	Murata	GCM32ER71A226K
	COUT2(Note2)	Open	-	-	-	-
	RFB0	0 Ω	0603	1608	ROHM	MCR03 Series
	RFB1	68k Ω	0603	1608	ROHM	MCR03 Series
	RFB2	13k Ω	0603	1608	ROHM	MCR03 Series
	RDIS	0 Ω	0603	1608	ROHM	MCR03 Series
	RDISN	Open	-	-	-	-
	REX(Note2)	0 Ω	0603	1608	ROHM	MCR03 Series
	REXN(Note2)	Open	-	-	-	-

Table 9. BD9P105EFV-C (6.0V, 1.0A) Parts list

	Part No	Value	PKG(inch)	PKG(mm)	Manufacturer	Part Name(Series)
π type filter	CF1	4.7μF	1210	3225	Murata	GCM32ER71H475K
	LF1	2.2μH	2524h18	6360h45	TDK	CLF6045NIT-2R2N-D
	CF2	0.1μF	0402	1005	Murata	GCM155R71H104K
	CBLK	220μF	0404h04	1010h10	Nichicon	UWD1V221MCQ1GS
Basic	CIN2	4.7μF	1210	3225	Murata	GCM32ER71H475K
	CIN1	0.1μF	0402	1005	Murata	GCM155R71H104K
	CVREG	1μF	0805	2012	Murata	GCM21BR71C105K
	CBST	0.1μF	0402	1005	Murata	GCM155R71H104K
	RRST	10kΩ	0603	1608	ROHM	MCR03 Series
Application	L1	4.7μH	2524h18	6360h45	TDK	CLF6045NIT-4R7N-D
	COUT1 ^(Note2)	22μF	1210	3225	Murata	GCM32ER71A226K
	COUT2 ^(Note2)	Open	-	-	-	-
	RFB0	0Ω	0603	1608	ROHM	MCR03 Series
	RFB1	130kΩ	0603	1608	ROHM	MCR03 Series
	RFB2	20kΩ	0603	1608	ROHM	MCR03 Series
	RDIS	0Ω	0603	1608	ROHM	MCR03 Series
	RDISN	Open	-	-	-	-
	REX ^(Note2)	Open	-	-	-	-
	REXN ^(Note2)	0Ω	0603	1608	ROHM	MCR03 Series

Table 10. BD9P105EFV-C (8.3V, 1.0A) Parts list

	Part No	Value	PKG(inch)	PKG(mm)	Manufacturer	Part Name(Series)
π type filter	CF1	4.7μF	1210	3225	Murata	GCM32ER71H475K
	LF1	2.2μH	2524h18	6360h45	TDK	CLF6045NIT-2R2N-D
	CF2	0.1μF	0402	1005	Murata	GCM155R71H104K
	CBLK	220μF	0404h04	1010h10	Nichicon	UWD1V221MCQ1GS
Basic	CIN2	4.7μF	1210	3225	Murata	GCM32ER71H475K
	CIN1	0.1μF	0402	1005	Murata	GCM155R71H104K
	CVREG	1μF	0805	2012	Murata	GCM21BR71C105K
	CBST	0.1μF	0402	1005	Murata	GCM155R71H104K
	RRST	Open	-	-	-	-
Application	L1	4.7μH	2524h18	6360h45	TDK	CLF6045NIT-4R7N-D
	COUT1 ^(Note2)	22μF	1210	3225	Murata	GCM32ER71A226K
	COUT2 ^(Note2)	Open	-	-	-	-
	RFB0	0Ω	0603	1608	ROHM	MCR03 Series
	RFB1	150kΩ	0603	1608	ROHM	MCR03 Series
	RFB2	16kΩ	0603	1608	ROHM	MCR03 Series
	RDIS	0Ω	0603	1608	ROHM	MCR03 Series
	RDISN	Open	-	-	-	-
	REX ^(Note2)	Open	-	-	-	-
	REXN ^(Note2)	0Ω	0603	1608	ROHM	MCR03 Series
	RRST2 ^(Note3)	10kΩ	0603	1608	ROHM	MCR03 Series

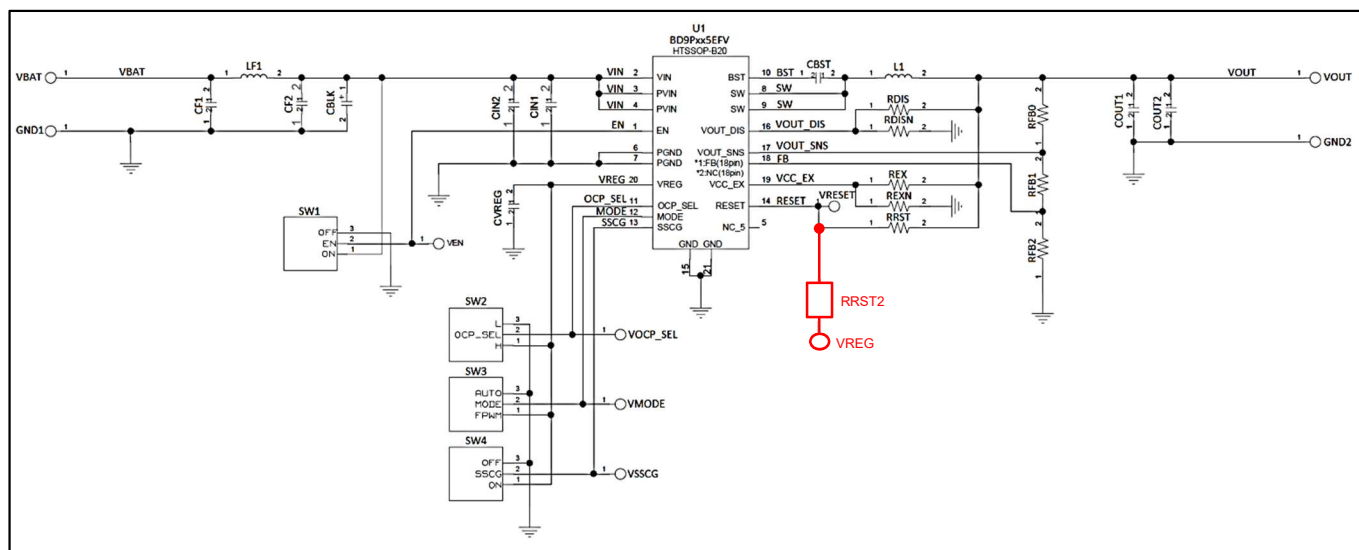


Figure 6. BD9P105EFV-C (8.3V, 1.0A) Circuit Diagram

(Note 1)

Output Voltage	Recommended COUT Value
≥ 3.3V	22uF (Typ) or more
< 3.3V	$C_{out} \geq \frac{72.6}{V_{out}} [\mu F]$ (V_{out} is the output voltage [V])

(Note 2) VCC_EX is power supply input for internal circuit. VREG voltage is supplied from VCC_EX when voltage between 3.2V (V_{TEXH}, Max) and 5.65 V (V_{EXOVL}, Min) is connected to this pin. Connecting this pin to VOUT improves efficiency. In case of not use this function, connect this pin to GND.

Output Voltage	REX setting	REXN setting	VCC_EX State
$3.2V \leq V_{out} \leq 5.65V$	0Ω	Open	Connected to VOUT
$3.2V > V_{out} > 5.65V$	Open	0Ω	Connected to GND

(Note 3) RESET terminal should be pulled-up to VREG manually using R_{RST2} when the output setting is over 6.5V. Because RESET pin's absolute maximum rating is 7.0V. If RESET is not pulled-up to V_{OUT}, it can be pulled-up to VREG manually using R_{RST2} by default.

Since PCB doesn't have provision for RREST2 (RESET pulled-up to VREG), RREST2 has to be added manually.

Board Layout

Evaluation Board PCB information

Number of Layers	Material	Board Size	Copper Thickness
4	FR-4 HITG	100mm x 75mm x 1.6mm	2oz(70 μ m) / 1oz (35 μ m) / 1oz (35 μ m) / 2oz(70 μ m)

The layout of BD9Pxx5EFV is shown below.

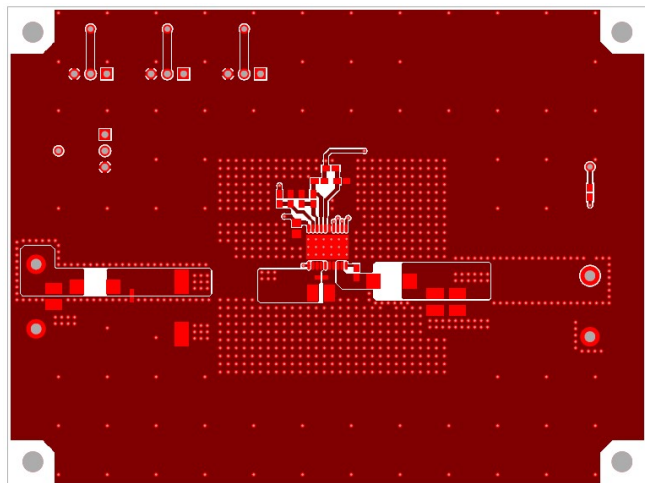


Figure 7. Top Layer Layout
(Top View)



Figure 8. Middle1 Layer Layout
(Top View)

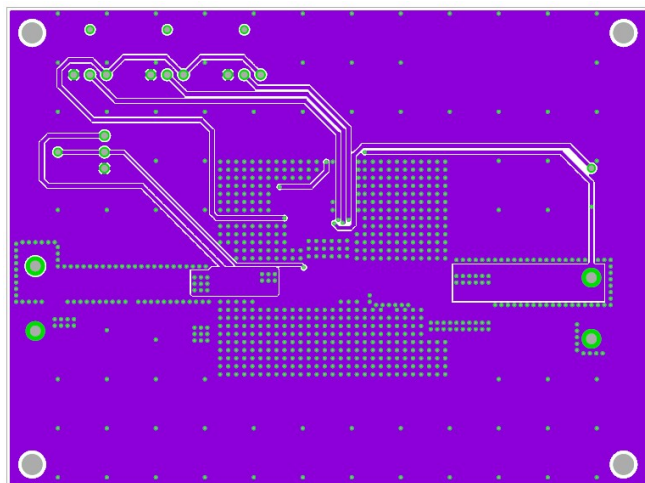


Figure 9. Middle2 Layer Layout
(Top View)

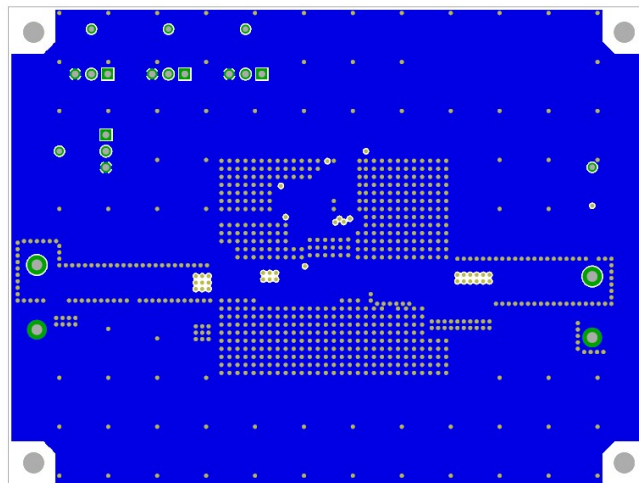


Figure 10. Bottom Layer Layout
(Top View)

Reference application data (BD9P135EFV-C)

(Ta=25°C)

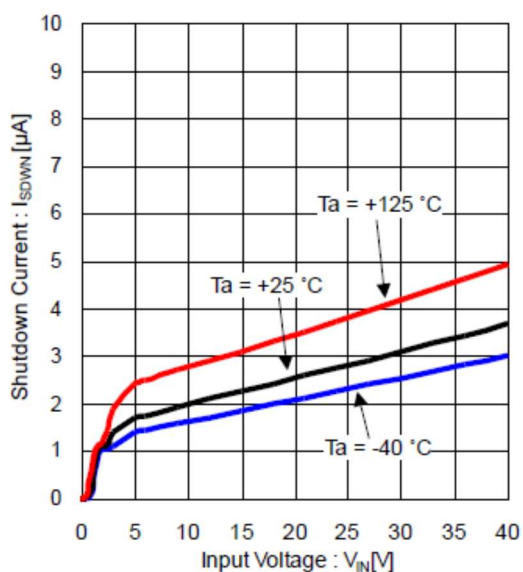


Figure 11. Shutdown Current vs Input Voltage

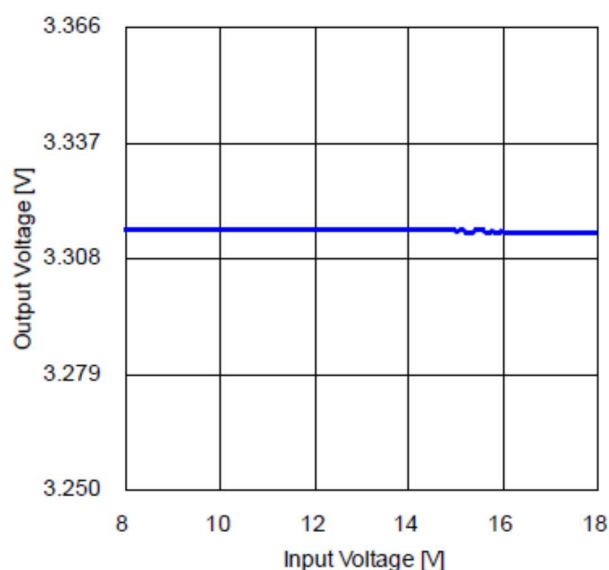


Figure 12. Line Regulation (IOUT = 1 A)

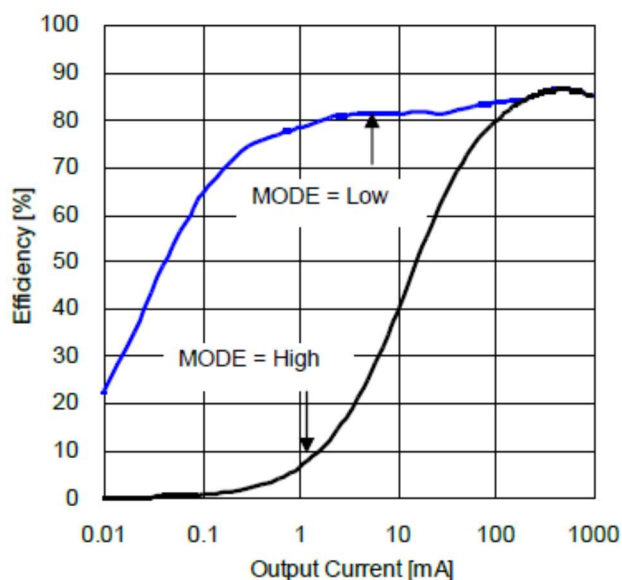


Figure 13. Efficiency vs Output Current (VIN = 12V)

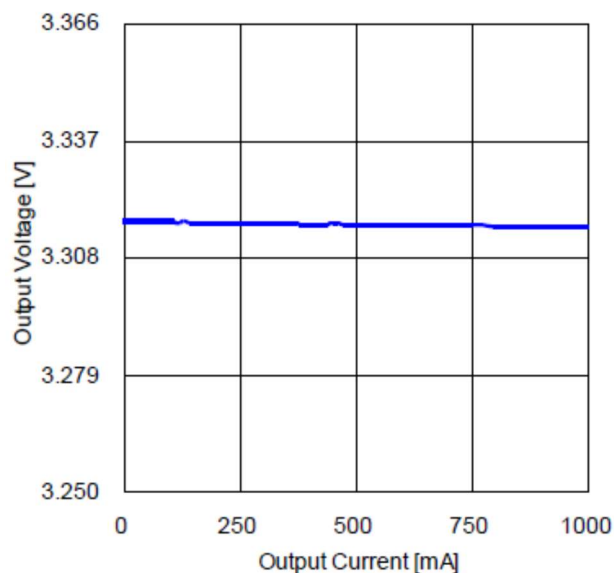


Figure 14. Load Regulation (VIN = 12 V)



Figure 15. Load Response 1

(VIN = 12 V, VMODE = 5 V, IOUT = 0 A to 1 A)

Other series application data please refer to datasheet.

Revision History

Date	Revision Number	Description
13. Nov. 2020	01	Initial release

Notes

- 1) The information contained herein is subject to change without notice.
- 2) Before you use our Products, please contact our sales representative and verify the latest specifications :
- 3) Although ROHM is continuously working to improve product reliability and quality, semiconductors can break down and malfunction due to various factors.
Therefore, in order to prevent personal injury or fire arising from failure, please take safety measures such as complying with the derating characteristics, implementing redundant and fire prevention designs, and utilizing backups and fail-safe procedures. ROHM shall have no responsibility for any damages arising out of the use of our Products beyond the rating specified by ROHM.
- 4) Examples of application circuits, circuit constants and any other information contained herein are provided only to illustrate the standard usage and operations of the Products. The peripheral conditions must be taken into account when designing circuits for mass production.
- 5) The technical information specified herein is intended only to show the typical functions of and examples of application circuits for the Products. ROHM does not grant you, explicitly or implicitly, any license to use or exercise intellectual property or other rights held by ROHM or any other parties. ROHM shall have no responsibility whatsoever for any dispute arising out of the use of such technical information.
- 6) The Products specified in this document are not designed to be radiation tolerant.
- 7) For use of our Products in applications requiring a high degree of reliability (as exemplified below), please contact and consult with a ROHM representative : transportation equipment (i.e. cars, ships, trains), primary communication equipment, traffic lights, fire/crime prevention, safety equipment, medical systems, servers, solar cells, and power transmission systems.
- 8) Do not use our Products in applications requiring extremely high reliability, such as aerospace equipment, nuclear power control systems, and submarine repeaters.
- 9) ROHM shall have no responsibility for any damages or injury arising from non-compliance with the recommended usage conditions and specifications contained herein.
- 10) ROHM has used reasonable care to ensure the accuracy of the information contained in this document. However, ROHM does not warrants that such information is error-free, and ROHM shall have no responsibility for any damages arising from any inaccuracy or misprint of such information.
- 11) Please use the Products in accordance with any applicable environmental laws and regulations, such as the RoHS Directive. For more details, including RoHS compatibility, please contact a ROHM sales office. ROHM shall have no responsibility for any damages or losses resulting from non-compliance with any applicable laws or regulations.
- 12) When providing our Products and technologies contained in this document to other countries, you must abide by the procedures and provisions stipulated in all applicable export laws and regulations, including without limitation the US Export Administration Regulations and the Foreign Exchange and Foreign Trade Act.
- 13) This document, in part or in whole, may not be reprinted or reproduced without prior consent of ROHM.



Thank you for your accessing to ROHM product informations.
More detail product informations and catalogs are available, please contact us.

ROHM Customer Support System

<http://www.rohm.com/contact/>