

ROHM Switching Regulator Solutions

Evaluation Board for ROHM's BU90004GWZ Synchronous Buck Converter with Integrated FET

BU90004GWZ-E2EVK-101 (1.8V | 1A Output)

USAP58-A-0009

• **Introduction**

This application note will explain the steps necessary to operate and evaluate ROHM's BU90004GWZ synchronous buck DC/DC converter using the BU90004GWZ-E2EVK-101 evaluation board. Component selection, board layout recommendations, operating procedures, and application data are included.

• **Description**

This evaluation board has been specifically developed to evaluate the BU90004GWZ synchronous buck DC/DC converter with integrated 250mΩ high-side Pch and 220mΩ low-side Nch MOSFETs. Features include an input voltage range of 2.3V to 5.5V, 1.8V output, and a switching frequency range of 4.8MHz to 6.0MHz. Multiple protection functions are also built in, including a soft start circuit that prevents inrush current during startup, UVLO (Under Voltage Lock Out), TSD (Thermal Shutdown), and OCP (Over Current Protection). An EN pin allows for simple ON/OFF control to reduce standby current consumption, while a MODE pin enables selection between fixed PWM operation or automatic PFM/PWM switching to improve efficiency during light loads.

• **Applications**

Smartphones, portables, compact DC/DC modules, USB accessories

• **Evaluation Board Operating Limits and Absolute Maximum Ratings**

Parameter	Symbol	Limit			Unit	Conditions
		MIN	TYP	MAX		
Supply Voltage						
	BU90004GWZ	V _{CC}	2.3	-	5.5	V
Output Voltage / Current						
	BU90004GWZ	V _{OUT}	-	1.80	-	V
		I _{OUT}	-	-	1	A

• **Evaluation Board**

Below is an image of the BU90004GWZ-E2EVK-101 evaluation board.

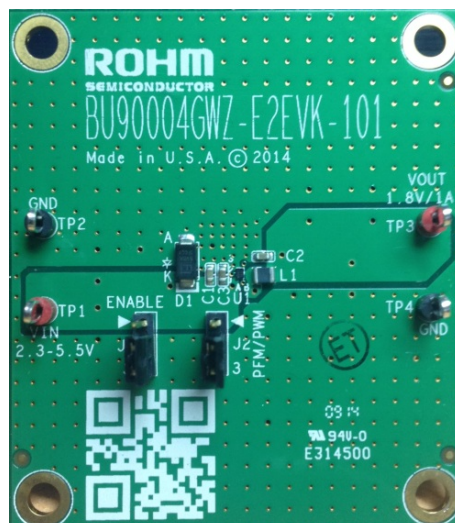
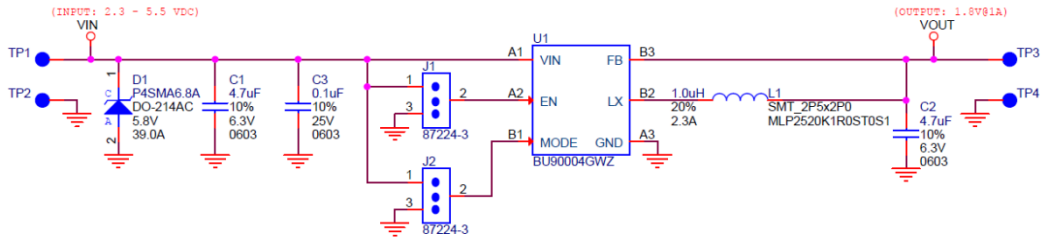


Fig 1: BU90004GWZ-E2EVK-101 Evaluation Board

● Board Schematic



BU90004GWZ EVM Jumper Positions		
Reference Designator	Position	Description
J1	2 - 1	Jumper to enable U1. Active Mode
	2 - 3	Jumper to disable U1. standby Mode
J2	2 - 1	Jumper to select Forced PWM Mode
	2 - 3	Jumper to select Automatic PFM/PWM Mode

Note:
 2.3V =< VIN < 2.7V: IoutMAX = 0.6A
 2.7V =< VIN < 3.0V: IoutMAX = 0.8A
 3.0V =< VIN < 5.5V: IoutMAX = 1.0A

Fig 2: BU90004GWZ-E2EVK-101 Evaluation Board Schematic

● Board I/O

Below is a reference application circuit showing the inputs VIN, EN, and MODE and output VOUT.

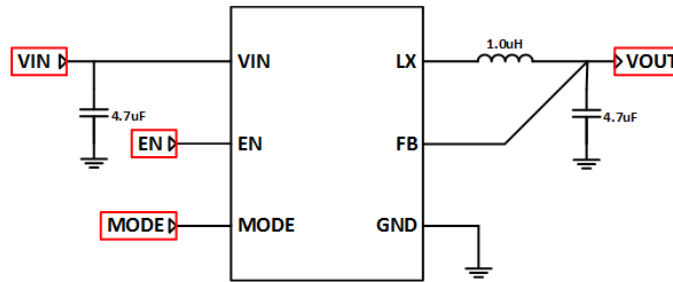


Fig 3: Evaluation Board I/O

● Operating Procedures

1. Connect the power supply's GND terminal to GND test point TP2 on the evaluation board.
2. Connect the power supply's VCC terminal to VIN test point TP1 on the evaluation board. This will provide VIN to the IC U1. Please note that VCC should be in the range from 2.3V to 5.5V.
3. Set the operating mode of the IC by the position of shunt jumper J2 (connect Pin 2 to Pin1, the MODE pin of IC U1 will be pulled high and IC U1 will operate in Forced PWM mode, otherwise the MODE pin of IC U1 will be pulled low and IC U1 will operate in Automatic PFM/PWM mode).
4. Check that the shunt jumper J1 is in the ON position (connect Pin 2 to Pin1, the EN pin of IC U1 is pulled high).
5. Connect the electronic load to TP3 and TP4. Do not turn the load ON (the electronic load is powered OFF).
6. Turn ON the power supply. The output voltage VOUT (+1.8V) can be measured at test point TP3. Now turn the load ON. The load can be increased up to 1A MAX.

Notes:

In some instances, the evaluation board may not operate after following the above power up sequence, possibly due to output current spikes that exceed the current limit of 1A with the 1A electronic load setting as shown in Fig. 4. In these cases the built-in OCP (Over Current Protection) circuit has most likely been activated to protect the IC by limiting the output voltage to 0.21V instead of the normal 1.8V. To resume normal operation, turn OFF any output loads and power down the input voltage. Then follow the operating procedures once again.

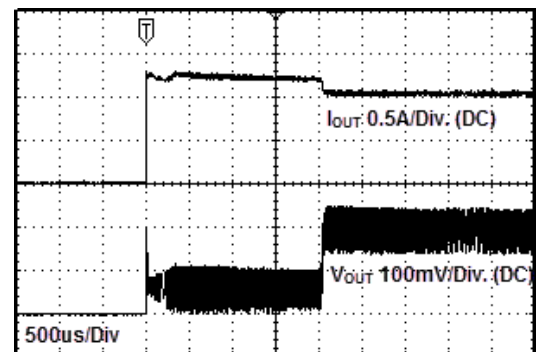


Fig 4: Iout vs. Vout When OCP is Activated

• Reference Application Data

The following are graphs of the hot plugging test, quiescent current, efficiency, load response, and output voltage ripple response of the BU90004GWZ-E2EVK-101 evaluation board.

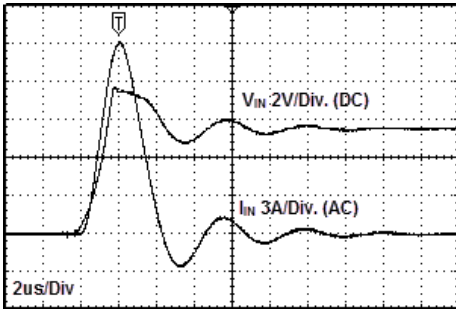


Fig 5: Hot Plug-in Test with Zener Diode P4SMA6.8A, $V_{IN}=5.5V$, $V_{OUT}=1.8V$, $I_{OUT}=1A$, Automatic PFM/PWM Mode

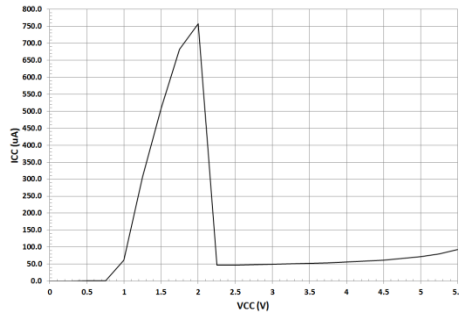


Fig 6: Circuit Current vs. Power Supply Voltage (Temp=25°C, Automatic PFM/PWM Mode)

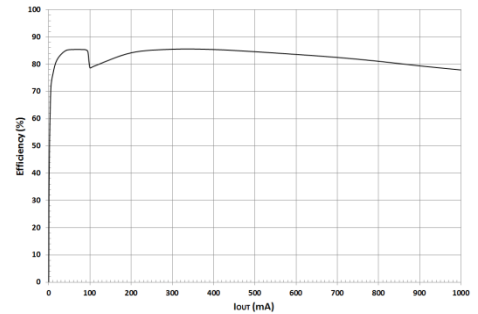


Fig 7: Electric Power Conversion Rate ($V_{OUT}=1.8V$, Automatic PFM/PWM Mode)

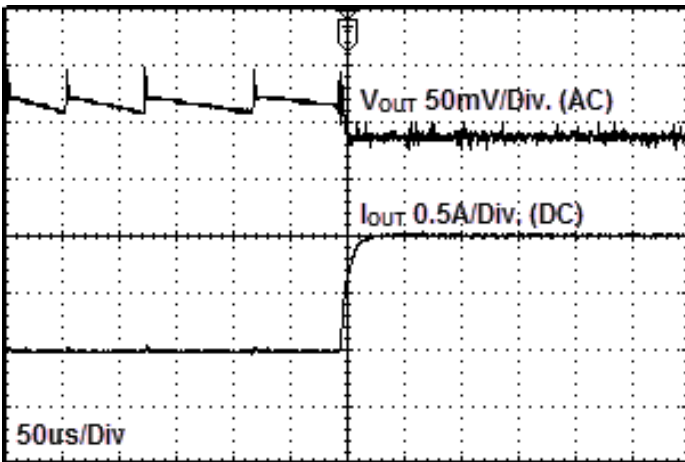


Fig 8: Load Response Characteristics ($V_{IN}=5V$, $V_{OUT}=1.8V$, $L=1.0\mu H$, $C_{OUT}=4.7\mu F$, $I_{OUT}=0A \rightarrow 1A$, Automatic PFM/PWM Mode)

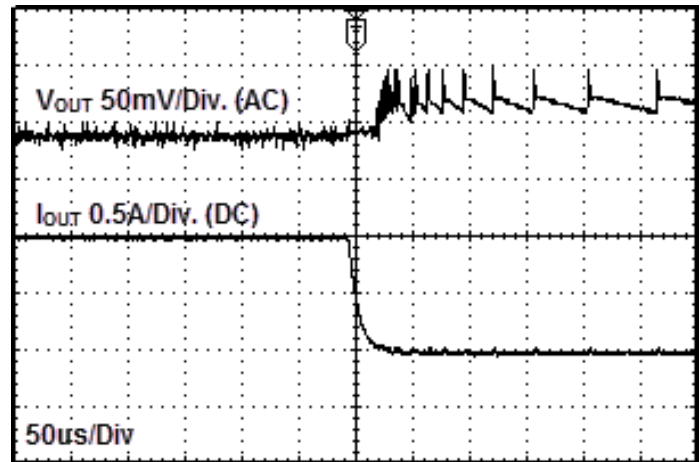


Fig 9: Load Response Characteristics ($V_{IN}=5V$, $V_{OUT}=1.8V$, $L=1.0\mu H$, $C_{OUT}=4.7\mu F$, $I_{OUT}=1A \rightarrow 0A$, Automatic PFM/PWM Mode)

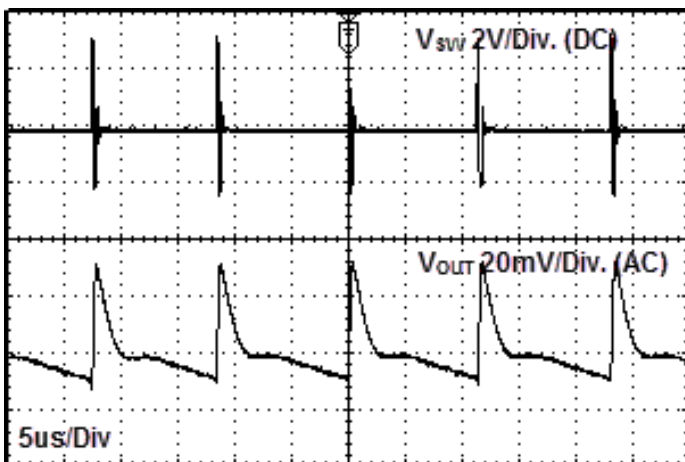


Fig 10: Output Voltage Ripple Response Characteristics ($V_{IN}=5V$, $V_{OUT}=1.8V$, $L=1.0\mu H$, $C_{OUT}=4.7\mu F$, $I_{OUT}=10mA$, Automatic PFM/PWM Mode)

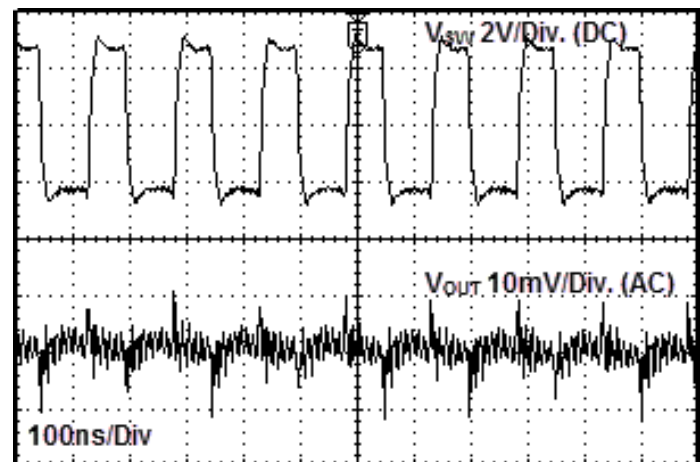


Fig 11: Output Voltage Ripple Response Characteristics ($V_{IN}=5V$, $V_{OUT}=1.8V$, $L=1.0\mu H$, $C_{OUT}=4.7\mu F$, $I_{OUT}=1A$, Automatic PFM/PWM Mode)

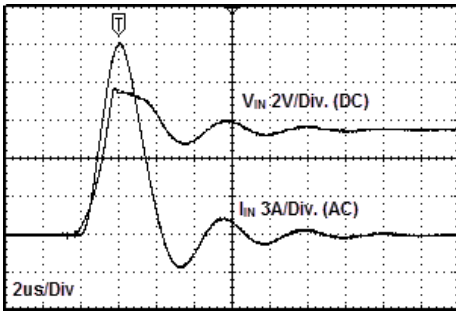


Fig 12: Hot Plug-in Test with Zener Diode P4SMA6.8A, $V_{IN}=5V$, $V_{OUT}=1.8V$, $I_{OUT}=1A$, Forced PWM Mode

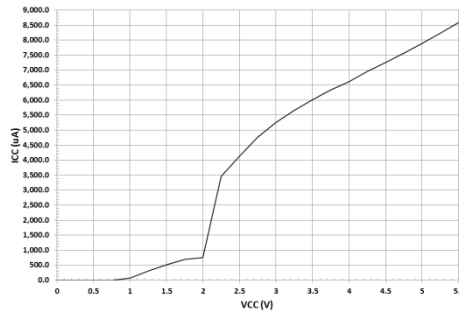


Fig 13: Circuit Current vs. Power Supply Voltage (Temp=25°C, Forced PWM Mode)

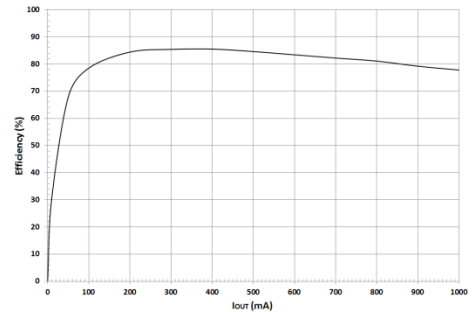


Fig 14: Electric Power Conversion Rate ($V_{OUT}=1.8V$, Forced PWM Mode)

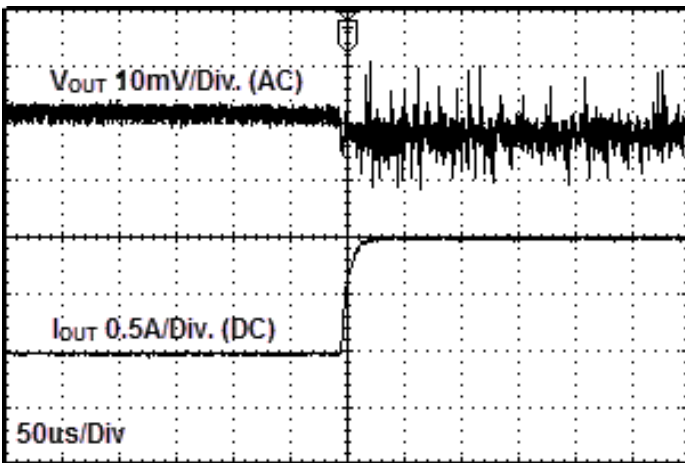


Fig 15: Load Response Characteristics ($V_{IN}=5V$, $V_{OUT}=1.8V$, $L=1.0\mu H$, $C_{OUT}=4.7\mu F$, $I_{OUT}=0A \rightarrow 1A$, Forced PWM Mode)

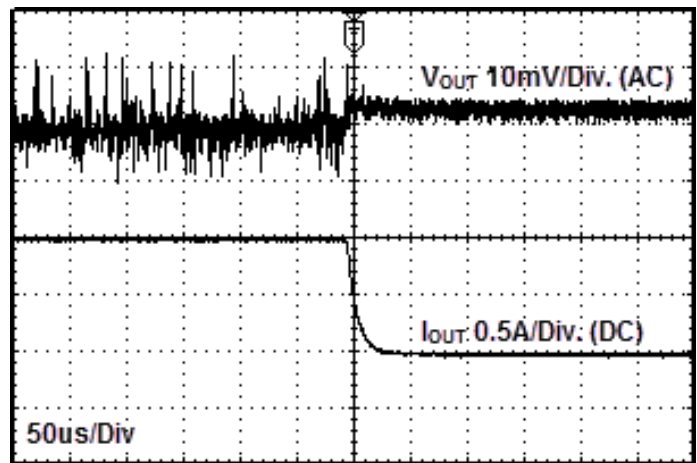


Fig 16: Load Response Characteristics ($V_{IN}=5V$, $V_{OUT}=1.8V$, $L=1.0\mu H$, $C_{OUT}=4.7\mu F$, $I_{OUT}=1A \rightarrow 0A$, Forced PWM Mode)

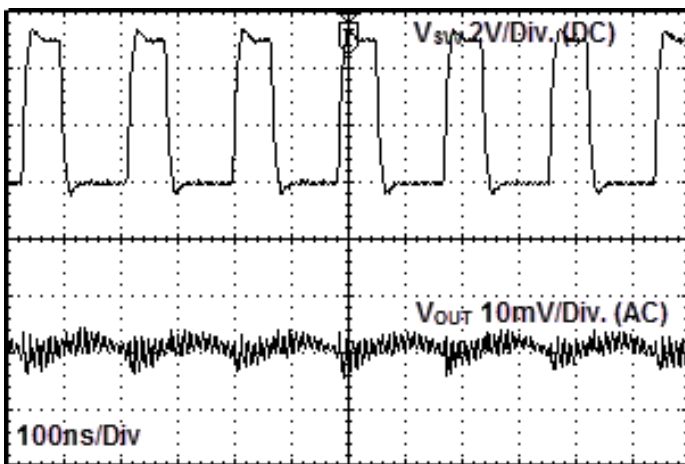


Fig 17: Output Voltage Ripple Response Characteristics ($V_{IN}=5V$, $V_{OUT}=1.8V$, $L=1.0\mu H$, $C_{OUT}=4.7\mu F$, $I_{OUT}=10mA$, Forced PWM Mode)

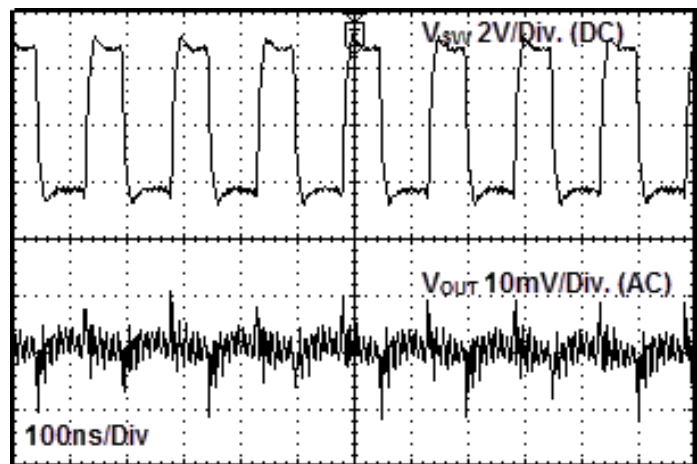


Fig 18: Output Voltage Ripple Response Characteristics ($V_{IN}=5V$, $V_{OUT}=1.8V$, $L=1.0\mu H$, $C_{OUT}=4.7\mu F$, $I_{OUT}=1A$, Forced PWM Mode)

• **Evaluation Board Layout Guidelines**

Below are guidelines that have been tested and recommended for BU90004GWZ designs.

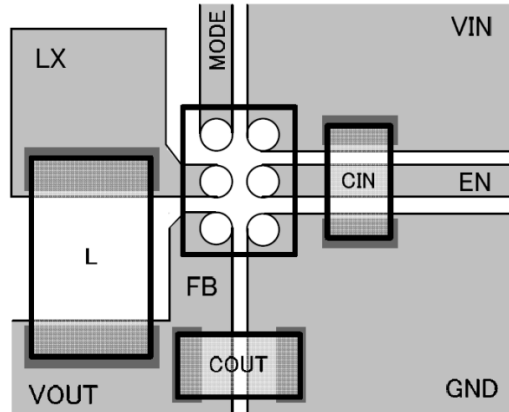


Fig 19: BU90004GWZ-E2EVK-101 PCB Layout

- ① The input capacitor C_{IN} should be mounted as close as possible to the IC's V_{IN} and GND pins.
- ② The output voltage block should be placed as far as possible from the FB pin.
- ③ C_{OUT} and L should be connected as close as possible. Also, to reduce noise the L wiring should be as close as possible to the LX pin.

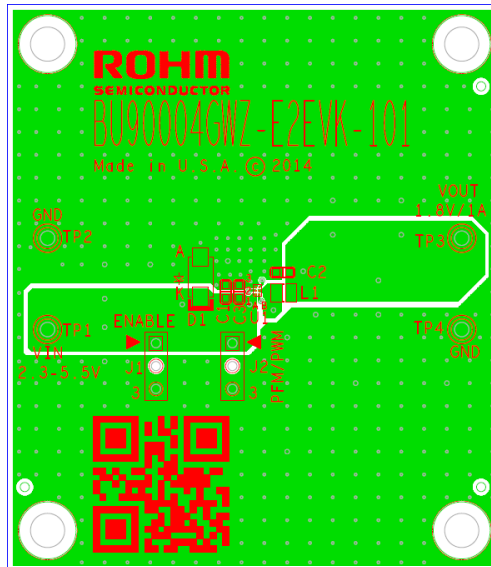


Fig 20: BU90004GWZ-E2EVK-101 Board Layout

• **Application Circuit Component Selection**

Inductor (L)

The inductance has a significant effect on the output ripple current. As shown by the following equation, the ripple current decreases as the inductor and/or switching frequency increase.

$$\Delta I_L = \frac{(V_{IN} - V_{OUT}) \times V_{OUT}}{L \times V_{IN} \times f}$$

f: Switching Frequency, L: Inductance, ΔI_L: Inductor Current Ripple

As a minimum requirement, the DC current rating of the inductor should be at least equal to the maximum load current plus half of the inductor ripple current as shown by the equation below.

$$I_{LPEAK} = I_{OUTMAX} + \frac{\Delta I_L}{2}$$

- **Evaluation Board BOM**

Below is a table showing the bill of materials. Part numbers and supplier references are also provided.

No.	Qty.	Ref	Description	Manufacturer	Part Number
1	2	C1,C2	CAP CER 4.7UF 6.3V 10% X5R 0603	Murata	GRM188R60J475KE19D
2	1	C3	CAP CER 0.1UF 25V 10% X7R 0603	Murata	GRM188R71E104KA01D
3	1	D1	DIODE TVS 400W 6.8V UNI 5% SMD	Littelfuse Inc	P4SMA6.8A
4	2	J1,J2	CONN HEADER VERT .100 3POS 15AU	TE Connectivity	87224-3
5	1	L1	INDUCTOR POWER 1.0UH 2.3A SMD	TDK	MLP2520K1R0ST0S1
6	2	TP1,TP3	TEST POINT PC MULTI PURPOSE RED	Keystone Electronics	5010
7	2	TP2,TP4	TEST POINT PC MULTI PURPOSE BLK	Keystone Electronics	5011
8	1	U1	IC REG BUCK SYNC 1.8V 1A 6WLCSP	ROHM	BU90004GWZ-E2
9	2		Shunt jumper for header J1, J2 (item #4), CONN SHUNT 2POS GOLD W/HANDLE	TE Connectivity	881545-1

Notes

No copying or reproduction of this document, whole or in part, is permitted without the consent of ROHM Co., Ltd.

The contents specified herein are subject to change without notice.

The information contained in this document are for the purpose of introducing ROHM products (hereinafter 'Products'). When using any such Products, please be sure to refer to the specifications, which can be obtained from ROHM upon request.

Examples of application circuits, circuit constants and any other information contained herein illustrate the standard usage and operations of the Products, and peripheral conditions must be taken into account when designing circuits for mass production.

Great care was taken to ensure the accuracy of the information specified in this document. However, ROHM shall bear no responsibility for any damages incurred from inaccuracies or the misprint of information.

The technical information specified herein is intended only to show the typical functions and examples of application circuits for the Products. ROHM does not grant, either explicitly or implicitly, any license to use or exercise intellectual property or other rights held by ROHM and other parties. Furthermore, ROHM shall bear no responsibility whatsoever for any disputes arising from the use of such technical information.

The Products specified in this document are intended to be used with general-use electronic equipment or devices (such as audio visual equipment, office automation equipment, communication devices, electronic appliances, and gaming devices).

The Products specified in this document are not designed to be radiation tolerant.

While ROHM makes every effort to enhance the quality and reliability of its Products, Products may fail or malfunction for a variety of reasons.

Please be sure to implement safety measures to guard against the possibility of physical injury, fire, or any other damage that may arise due to Product failure, such as derating, redundancy, fire control, and fail-safe designs. ROHM shall bear no responsibility whatsoever for the use of any Product outside of the prescribed scope or not in accordance with the instruction manual.

The Products are not designed or manufactured to be used with any equipment, device, or system which requires an extremely high level of reliability, the failure or malfunction of which may result in a direct threat to human life or create a risk of human injury (such as medical instruments, transportation equipment, aerospace machinery, nuclear reactor controllers, fuel controllers, or other safety device). ROHM shall bear no responsibility in any way for the use of any Products for the above special purposes. If a Product is intended to be used for any such special purpose, please contact a ROHM sales representative before purchasing.

If intending to export or ship overseas any Product or technology specified herein that are controlled under the Foreign Exchange and Foreign Trade Law, it is necessary to obtain a license or permit under the applicable Law.



Thank you for your interest in ROHM products.
Please contact us for additional information and product catalogs.

ROHM Customer Support System

<http://www.rohm.com/contact/>