

## ROHM Solution Simulator

### 905 nm Pulsed Laser Diode

# RLD90QZWx series / Square wave B-01

This circuit simulate the square wave B-01 Time-Domain response of RLD90QZWx series. You can observe the square wave of not only the current but also the optical output waveform. You can customize the parameters of the components shown in blue, such as VIN, or peripheral components, and simulate the square wave B-01 Time-Domain with desired operating condition.

### General Cautions

**Caution 1:** The values from the simulation results are not guaranteed. Please use these results as a guide for your design.

**Caution 2:** Please refer to the Application note of Laser Diode for details of the technical information.

**Caution 3:** The characteristics may change depending on the actual board design and ROHM strongly recommend to double check those characteristics with actual board where the chips will be mounted on.

## 1 Simulation Schematic

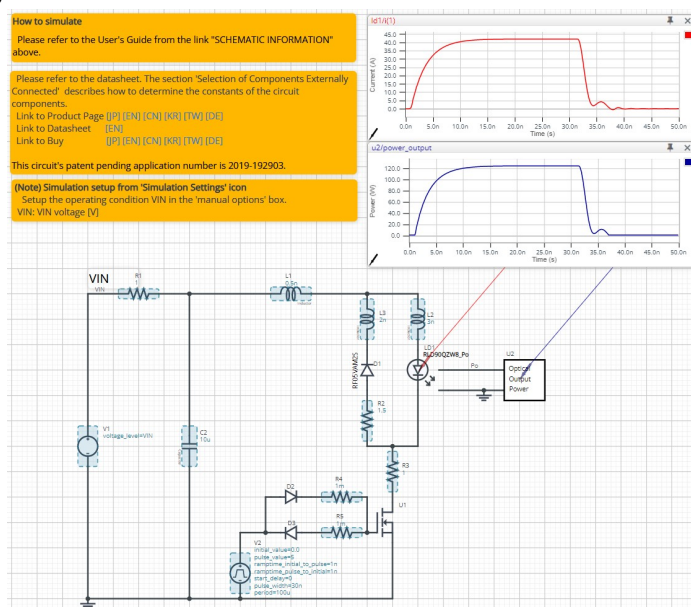


Figure 1. Simulation Schematic

## 2 How to simulate

The simulation settings, such as simulation time or convergence options, are configurable from the 'Simulation Settings' shown in Figure 2, and Table 1 shows the default setup of the simulation.

In case of simulation convergence issue, you can change advanced options to solve. Default statement in 'Manual Options' is a sets the transient analysis and parameter. You can modify it.

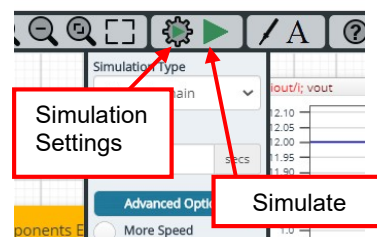


Figure 2. Simulation Settings and execution

Table 1. Simulation settings default setup

Parameters	Default	Note
Simulation Type	Time-Domain	Do not change Simulation Type
End Time	50 ns	-
Advanced options	Balanced	-
	Time Resolution	-
	Enhancement Convergence Assist	-
Manual Options	".tran 0 50ns 0ns .param VIN 60"	
		Default VIN for RLD90QZW3 is 40 V. RLD90QZW5 and RLD90QZW6 (25 V). RLD90QZW8 (60 V).

### 3 Simulation Conditions

Table 2. List of the simulation condition parameters

Instance Name	Type	Parameters	Default Value	Variable Range		Units
				Min	Max	
V1	Voltage Source	Voltage_level	VIN	1	190	V
		AC_magnitude	0.0	fixed		V
		AC_phase	0.0	fixed		ns
V2	Voltage Source	Initial_value	0	-5	3	V
		Pulse_value	5	4	6	V
		ramptime_initial_to_pulse	1n	1n	1μ	s
		ramptime_pulse_to_initial	1n	1n	1μ	s
		Start_delay	0	0	100	s
		Pulse_width	30n	1n	1	s
		Period	100μ	10n	1	s

#### 3.1 V2 parameter setup

Figure 3 shows how the V2 parameters correspond to the V2 stimulus waveform.

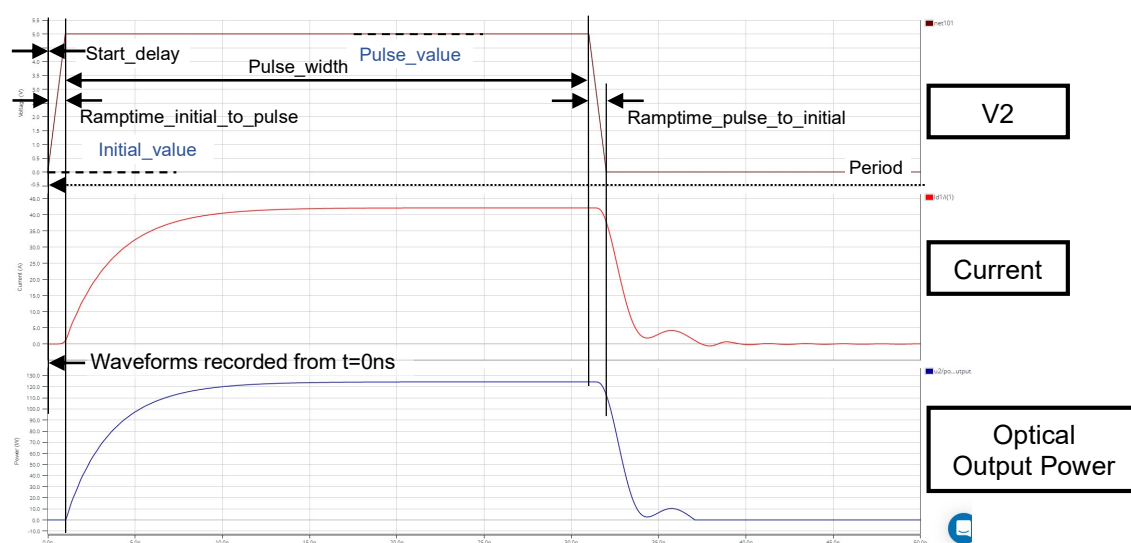


Figure 3. V2 parameters and its waveform

#### 4 RLD90QZWx series\_Po model

Table 3 shows the model pin function implemented. Note that RLD90QZWx series\_Po is the behavior model for its optical output power response operation, and no protection circuits or the functions not related to the purpose are not implemented.

Table 3. RLD90QZWx series\_Po model pins used for the simulation

Pins	Description
1	A / Anode
2	C / Cathode
OPT	Optical output power in V [volts]
GND	Ground

##### 4.1 Optical Output Power

RLD90QZWx series\_Po model outputs optical output power in V [volts] unit. Optical Output Power insert model multiplies the output result by 1A and convert it to W [watts]. To monitor the optical output power in W [watts], select probe item 'power\_output' from property of Optical Output Power insert model.

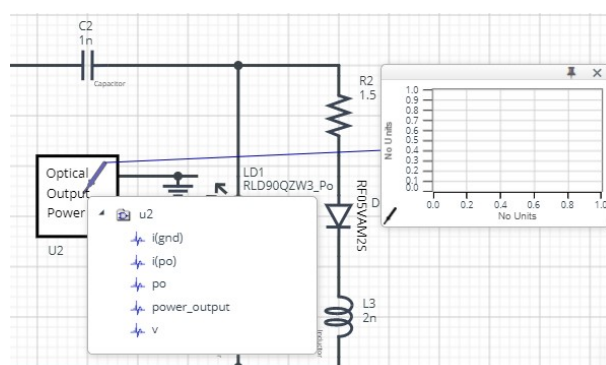


Figure 4. Probe Items of Optical Output Power insert model

## 5 Peripheral Components

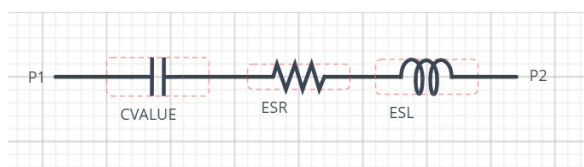
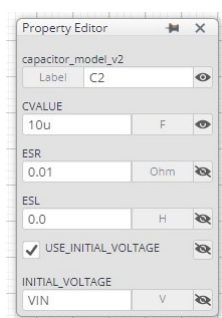
### 5.1 Bill of Material

Table 4 shows the list of components used in the simulation schematic. Each of the capacitor and inductor has the parameters of equivalent circuit shown below. The default value of equivalent components are set to zero except for the ESR of C, and parallel resistance of L. You can modify the values of each component.

Table 4. List of capacitors, inductors, and resistors used in the simulation circuit

Type	Instance Name	Default Value	Variable Range		Units
			Min	Max	
Capacitor	C2	10 $\mu$	0.1n	100 $\mu$	F
Inductor	L1	0.5	0.1	100	nH
	L2	3	0.1	100	nH
	L3	2	0.1	100	nH
Resistor	R1	1	0.1	10k	$\Omega$
	R2	1.5	0.01	100	$\Omega$
	R3	1	1m	1k	$\Omega$
	R4, R5	1m	1m	1k	$\Omega$

### 5.2 Capacitor Equivalent Circuits



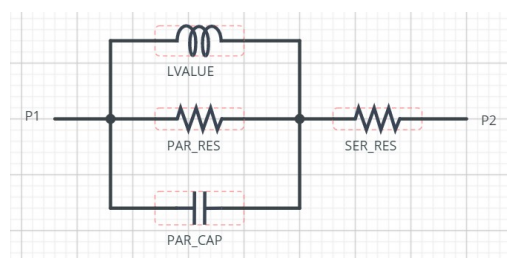
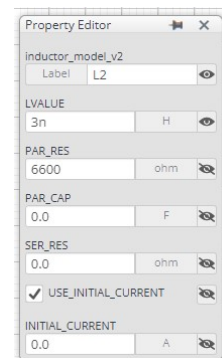
(a) Property editor

(b) Equivalent circuit

Figure 5. Capacitor property editor and equivalent circuit

The default value of ESR is 0.01  $\Omega$ .

### 5.3 Inductor Equivalent Circuits



(a) Property editor

(b) Equivalent circuit

Figure 6. Inductor property editor and equivalent circuit

The default value of PAR\_RES is 6.6 k $\Omega$ .

(Note 1) These parameters can take any positive value or zero in simulation but it does not guarantee the operation of the IC in any condition. Refer to the datasheet to determine adequate value of parameters.

## 6 Link to the product information and tools

### 6.1 Laser Diode

RLD90QZW3 : 905 nm, 75 W, 225  $\mu$ m Invisible Pulsed Laser Diode. [\[JP\]](#) [\[EN\]](#) [\[CN\]](#) [\[KR\]](#) [\[TW\]](#) [\[DE\]](#)

RLD90QZW5 : 905 nm, 25 W, 70  $\mu$ m Invisible Pulsed Laser Diode. [\[JP\]](#) [\[EN\]](#) [\[CN\]](#) [\[KR\]](#) [\[TW\]](#) [\[DE\]](#)

RLD90QZW6 : 905 nm, 25 W, 50  $\mu$ m Invisible Pulsed Laser Diode. [\[JP\]](#) [\[EN\]](#) [\[CN\]](#) [\[KR\]](#) [\[TW\]](#) [\[DE\]](#)

RLD90QZW8 : 905 nm, 120 W, 270  $\mu$ m Invisible Pulsed Laser Diode. [\[JP\]](#) [\[EN\]](#) [\[CN\]](#) [\[KR\]](#) [\[TW\]](#) [\[DE\]](#)

Technical Articles and Tools can be found in the Design Resources on the product web page.

## Notes

- 1) The information contained herein is subject to change without notice.
- 2) Before you use our Products, please contact our sales representative and verify the latest specifications :
- 3) Although ROHM is continuously working to improve product reliability and quality, semiconductors can break down and malfunction due to various factors.  
Therefore, in order to prevent personal injury or fire arising from failure, please take safety measures such as complying with the derating characteristics, implementing redundant and fire prevention designs, and utilizing backups and fail-safe procedures. ROHM shall have no responsibility for any damages arising out of the use of our Products beyond the rating specified by ROHM.
- 4) Examples of application circuits, circuit constants and any other information contained herein are provided only to illustrate the standard usage and operations of the Products. The peripheral conditions must be taken into account when designing circuits for mass production.
- 5) The technical information specified herein is intended only to show the typical functions of and examples of application circuits for the Products. ROHM does not grant you, explicitly or implicitly, any license to use or exercise intellectual property or other rights held by ROHM or any other parties. ROHM shall have no responsibility whatsoever for any dispute arising out of the use of such technical information.
- 6) The Products specified in this document are not designed to be radiation tolerant.
- 7) For use of our Products in applications requiring a high degree of reliability (as exemplified below), please contact and consult with a ROHM representative : transportation equipment (i.e. cars, ships, trains), primary communication equipment, traffic lights, fire/crime prevention, safety equipment, medical systems, servers, solar cells, and power transmission systems.
- 8) Do not use our Products in applications requiring extremely high reliability, such as aerospace equipment, nuclear power control systems, and submarine repeaters.
- 9) ROHM shall have no responsibility for any damages or injury arising from non-compliance with the recommended usage conditions and specifications contained herein.
- 10) ROHM has used reasonable care to ensure the accuracy of the information contained in this document. However, ROHM does not warrants that such information is error-free, and ROHM shall have no responsibility for any damages arising from any inaccuracy or misprint of such information.
- 11) Please use the Products in accordance with any applicable environmental laws and regulations, such as the RoHS Directive. For more details, including RoHS compatibility, please contact a ROHM sales office. ROHM shall have no responsibility for any damages or losses resulting non-compliance with any applicable laws or regulations.
- 12) When providing our Products and technologies contained in this document to other countries, you must abide by the procedures and provisions stipulated in all applicable export laws and regulations, including without limitation the US Export Administration Regulations and the Foreign Exchange and Foreign Trade Act.
- 13) This document, in part or in whole, may not be reprinted or reproduced without prior consent of ROHM.



Thank you for your accessing to ROHM product informations.  
More detail product informations and catalogs are available, please contact us.

## ROHM Customer Support System

<http://www.rohm.com/contact/>