

## Power Supply Monitor

# 2ch Reset & Comparator IC

### BD3775AF

#### ●General Description

BD3775AF is designed to monitor the voltage level of one or two power supplies (+5V and an arbitrary voltage) in a microprocessor circuit, memory board in large-size computer, for example.

If the circuit's power supply deviates more than a specified amount, then the BD3775AF generates a reset signal to the microprocessor.

Also, the BD3775AF has a comparator for the over voltage protection and the high-precision reference voltage and so on apart from the above features. It is also available for more complex applications so.

#### ●Feature

- High precision voltage detection (VSA = 4.20V  $\pm$  2.5%).
- Internal reset circuit that user selectable threshold level with hysteresis (VSB = 1.230V  $\pm$  1.5%). Internal open collector output comparators to create Over Voltage Detection circuit, reference voltage generator, and more. (VSC,OUTC)
- User selectable delay time of releasing reset signal depending on capacitor of CT node.
- Low power dissipation (I<sub>cc</sub> = 0.35mA, V<sub>CC</sub> = 5V).
- SOP8 package (5.0 × 6.2mm, 1.27mm pitch).

#### ●Applications

- Industrial Equipment.
- Arcade Amusement.

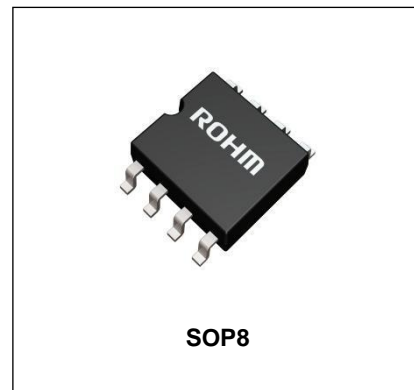
#### ●Key Specifications

■ Input Voltage	3.5V to 18V
■ Voltage Detection	
:VSAL	4.20V(Typ.)
:VSAH	4.30V(Typ.)
:VSB	1.230V(Typ.)
:VSC	1.245V(Typ.)
■ Operating Temperature	-40°C to 85°C

#### ●Packages

SOP8

5.00mm x 6.20mm x 1.71mm



#### ●Typical Application Circuit

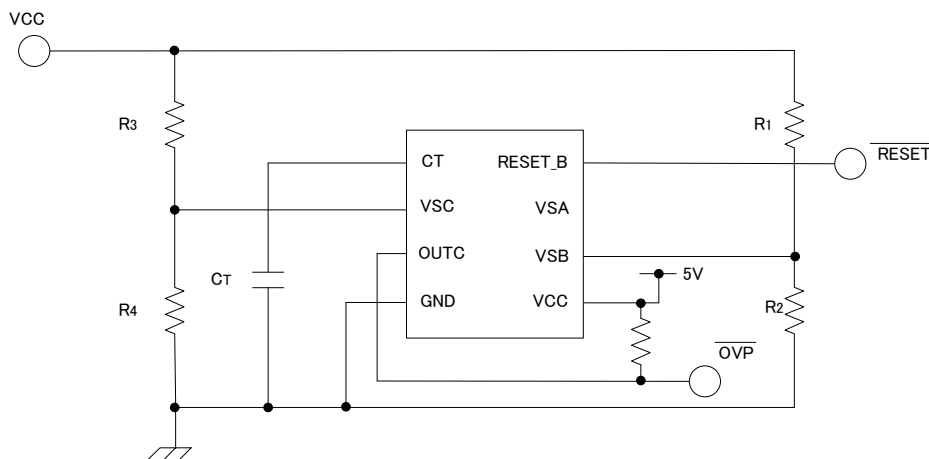


Figure 1. Typical Application Circuit

○Structure:Silicon Monolithic Integrated Circuit ○This product is not designed for normal operation with in a radioactive

●Pin configuration

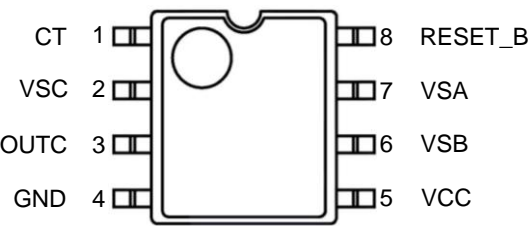


Figure 2. Pin configuration (TOP VIEW)

●Pin Description

Pin No.	Pin Name	Description
1	CT	Connected by capacitor deciding delay time.
2	VSC	Comp.C input voltage.
3	OUTC	Comp.C output detection signal.
4	GND	Ground.
5	VCC	Input supply.
6	VSB	Comp.B input voltage.
7	VSA	Comp input voltage.
8	RESET_B	RESET output signal.

●Block Diagram

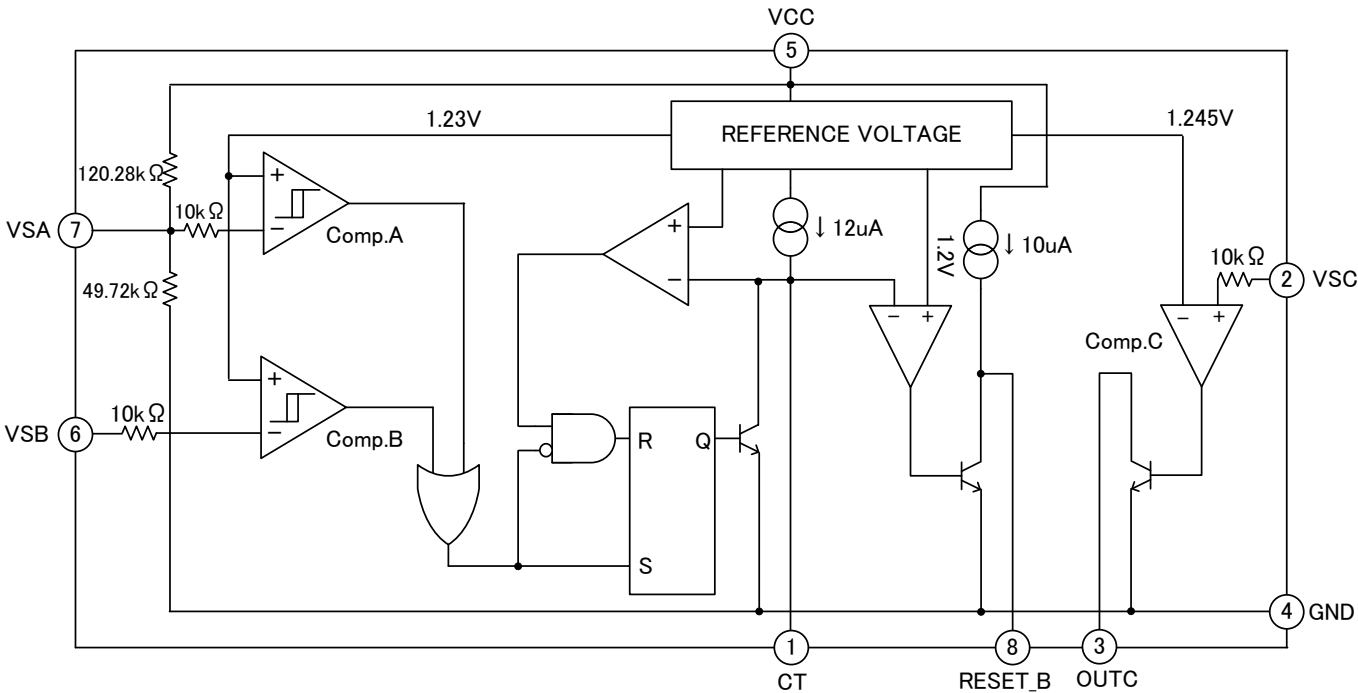


Figure 3. Block Diagram

### ●Description of Blocks

Comparators Comp.A and Comp.B apply a hysteresis to the detected voltage, so that when the voltage at either the VSA or VSB pin falls below 1.230V the RESET\_B output signal goes to "low" level.

Comp. B may be used to detect any given voltage (Sample Application 3), and can also be used as a forced reset pin (with reset hold time) with TTL input (Sample Application 6).

Note that if Comp.B is not used, the VSB pin should be connected to the VCC pin (Sample Application 1).

Instantaneous breaks or drops in the power supply can be detected as abnormal conditions by the BD3775AF within a 2μs interval. A delayed trigger function can be created by connecting capacitors to the VSA or VSB pin (Sample Application 8).

Because the RESET\_B output has built-in pull-up resistance, there is no need to connect to external pull-up resistance when connected to a high impedance load such as a CMOS logic IC.

Comparator Comp. C is an open-collector output comparator without hysteresis, in which the polarity of input/output characteristics is reversed. Thus Comp. C is useful for over-voltage detection (Sample Application 11) and positive logic RESET\_B signal output (Sample Application 7), as well as for creating a reference voltage (Sample Application 10).

Note that if Comp. C is not used, the VSC pin should be connected to the GND pin (Sample Application 1).

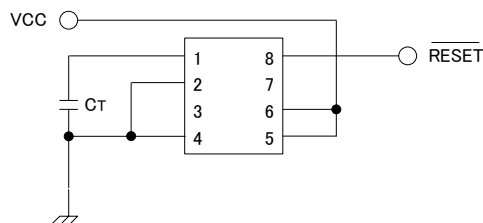


Figure 4. Typical Application Circuit

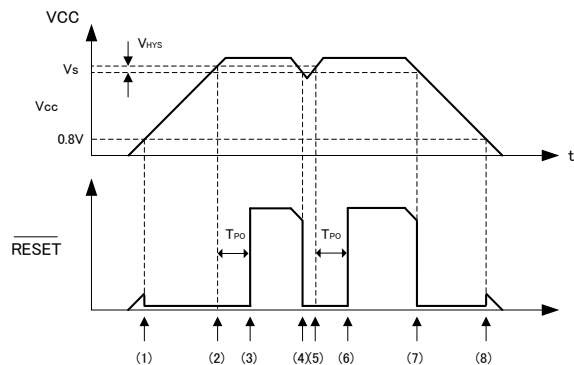


Figure 5. Timing Chart

- (1) When Vcc rises to about 0.8V, RESET\_B goes low.
- (2) When Vcc reaches  $V_{SAL} + V_{HYS}$ ,  $C_T$  then begins charging. RESET\_B remains low during this time.
- (3) RESET\_B goes high when  $C_T$  begins charging  
 $T_{PO} \doteq C_T \times 10^5$  (Refer to " $C_T$  pin capacitance vs. Reset holds time" in "TYPICAL CHARACTERISTICS".)
- (4) When Vcc level drops lower than  $V_{SAL}$ , then RESET\_B goes low and  $C_T$  starts discharging.
- (5) When Vcc level reaches  $V_{SAL} + V_{HYS}$ , then  $C_T$  starts charging.  
 In the case of voltage sagging, if the period from the time Vcc goes lower than or equal to  $V_S$  to the time Vcc reaches  $V_{SAL} + V_{HYS}$  again, is longer than  $T_{PL}$ , (as specified in the AC Characteristics),  $C_T$  is discharged and charged successively.
- (6) After  $T_{PO}$  passes, and Vcc level exceeds  $V_{SAL} + V_{HYS}$ , then RESET\_B goes high.
- (7) Same as Point 4.
- (8) RESET\_B remains low until Vcc drops below 0.8V.

● Absolute Maximum Ratings (Ta=25°C)

item	Symbol	Rating	Unit
Power Supply Voltage	V <sub>CC</sub>	20	V
Power Dissipation	P <sub>d</sub>	0.67 <sup>(NOTE 1)</sup>	W
Input Voltage	V <sub>SA</sub>	V <sub>CC</sub> +0.3(<20)	V
	V <sub>SB</sub>	20	V
	V <sub>SC</sub>	20	V
Storage temperature	T <sub>stg</sub>	-55 to +125	°C
Junction Temperature	T <sub>jmax</sub>	150	°C

(NOTE 1) During mounting of 70×70×1.6mmt 1layer board. Reduce by 186.56°C/W. (Above 25°C)

● Recommended Operating Ratings (Ta=-40°C to +85°C)

parameter	Symbol	Min	Typ	Max	Unit
Power Supply Voltage	V <sub>CC</sub>	3.5	5.0	18	V
Output current	I <sub>RESET_B</sub>	-	-	20	mA
	I <sub>OUTC</sub>	-	-	6	mA
Operating Temperature	T <sub>opr</sub>	-40	-	+85	°C

● Electrical Characteristics (Unless otherwise specified Ta=25°C, V<sub>CC</sub>=5.0V, C<sub>T</sub>=0.01μF)

parameter	Symbol	Limit			Unit	Condition
		Min	Typ	Max		
Power supply current	I <sub>CC1</sub>	-	350	500	μA	V <sub>SB</sub> =5V, V <sub>SC</sub> =0V
	I <sub>CC2</sub>	-	400	600	μA	V <sub>SB</sub> =0V, V <sub>SC</sub> =0V
Comp.A detection voltage	V <sub>SAL</sub>	4.10	4.20	4.30	V	V <sub>CC</sub> =sweep down
		4.05	4.20	4.35	V	V <sub>CC</sub> =sweep down, Ta=-40°C to +85°C
	V <sub>SAH</sub>	4.20	4.30	4.40	V	V <sub>CC</sub> =sweep up
		4.15	4.30	4.45	V	V <sub>CC</sub> =sweep up, Ta=-40°C to +85°C
Comp.A hysteresis width	V <sub>HYS A</sub>	50	100	150	mV	
Comp.B detection voltage	V <sub>SB</sub>	1.212	1.230	1.248	V	V <sub>SB</sub> =sweep down, Ta=25°C
		1.200	1.230	1.260	V	V <sub>SB</sub> =sweep down, Ta=-40°C to +85°C
Comp.B deviation of detection voltage	Δ V <sub>SB</sub>	-	3	10	mV	V <sub>CC</sub> =4.5V to 18V
Comp.B hysteresis width	V <sub>HYS A</sub>	14	28	42	mV	
Comp.B input current	I <sub>IHB</sub>	-	0	250	nA	V <sub>SB</sub> =5V
	I <sub>ILB</sub>	-	60	250	nA	V <sub>SB</sub> =0V

Comp.C detection voltage	$V_{SC}$	1.225	1.245	1.265	V	
		1.205	1.245	1.285	V	$T_a = -40^{\circ}\text{C}$ to $+85^{\circ}\text{C}$
Comp.C deviation of detection voltage	$\Delta V_{SC}$	-	3	10	mV	$V_{CC} = 3.5\text{V}$ to $18\text{V}$
Comp.C input current	$I_{IHC}$	-	0	500	nA	$V_{SC} = 5\text{V}$
	$I_{ILC}$	-	5	500	nA	$V_{SC} = 0\text{V}$
RESET_B output voltage	$V_{OHR}$	4.5	4.9	-	V	$I_{RESET\_B} = -5\mu\text{A}, V_{SB} = 5\text{V}$
	$V_{OLR}$	-	0.28	0.4	V	$I_{RESET\_B} = 3\text{mA}, V_{SB} = 0\text{V}$
		-	0.38	0.5	V	$I_{RESET\_B} = 10\text{mA}, V_{SB} = 0\text{V}$
RESET_B output sink current	$I_{RESET\_B}$	20	40	-	mA	$V_{RESET\_B} = 1.0\text{V}, V_{SB} = 0\text{V}$
CT charge current	$I_{CT}$	9	12	16	$\mu\text{A}$	$V_{SB} = 5\text{V}, V_{CT} = 0.5\text{V}$
OUTC output leakage current	$I_{OHC}$	-	0	1.0	$\mu\text{A}$	$V_{OUTC} = 18\text{V}$
OUTC output voltage	$V_{OLC}$	-	0.15	0.4	V	$I_{OUTC} = 4\text{mA}, V_{SC} = 5\text{V}$
OUTC sink current	$I_{OUTC}$	6	15	-	mA	$V_{OUTC} = 1.0\text{V}, V_{SC} = 5\text{V}$
RESET operation minimum supply voltage	$V_{CCL}$	-	0.8	1.2	V	$I_{RESET\_B} = 200\mu\text{A}, V_{RESET} \leq 0.4\text{V}$
VSA, VSB input pulse width	$t_{PI}$	5.0	-	-	$\mu\text{s}$	
Reset hold time	$t_{PO}$	0.5	1.0	1.5	ms	
RESET_B rise time	$t_r$	-	1.0	1.5	$\mu\text{s}$	$R_L(V_{CC} - \text{RESET\_B}) = 2.2\text{k}\Omega$ $C_L(\text{RESET\_B} - \text{GND}) = 100\text{pF}$
RESET_B fall time	$t_f$	-	0.1	0.5	$\mu\text{s}$	
Propagation delay time	$t_{PD}^{(NOTE\ 2)}$	-	2	10	$\mu\text{s}$	
	$t_{PHL}^{(NOTE\ 3)}$	-	0.5	-	$\mu\text{s}$	$R_L(V_{CC} - \text{OUTC}) = 2.2\text{k}\Omega$ $C_L(\text{OUTC} - \text{GND}) = 100\text{pF}$
	$t_{PLH}^{(NOTE\ 3)}$	-	1.0	-	$\mu\text{s}$	

(NOTE 2) In case of VSB termination.

(NOTE 3) In case of VSC termination.

© Not designed withstand radiation.

● Typical Performance Curve

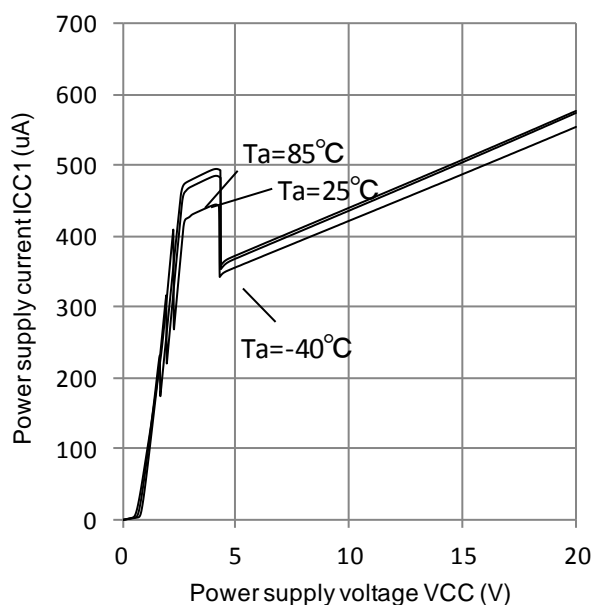


Figure 6. Power supply current vs. power supply voltage

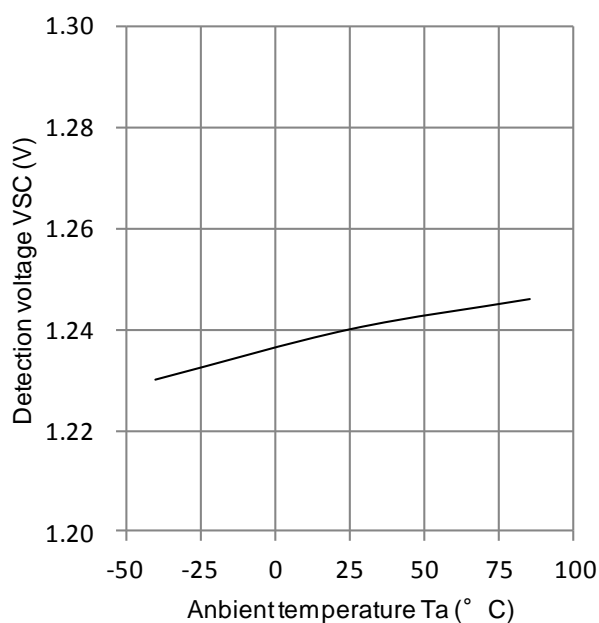


Figure 7. Detection voltage (VSC) vs. ambient temperature

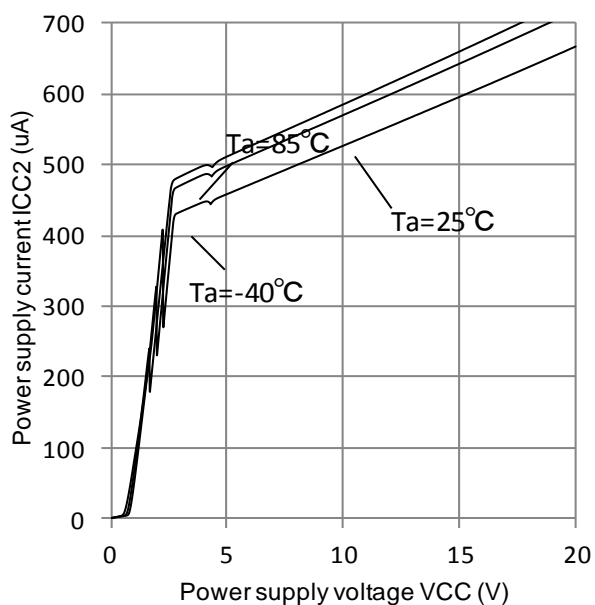


Figure 8. Power supply current vs. power supply voltage

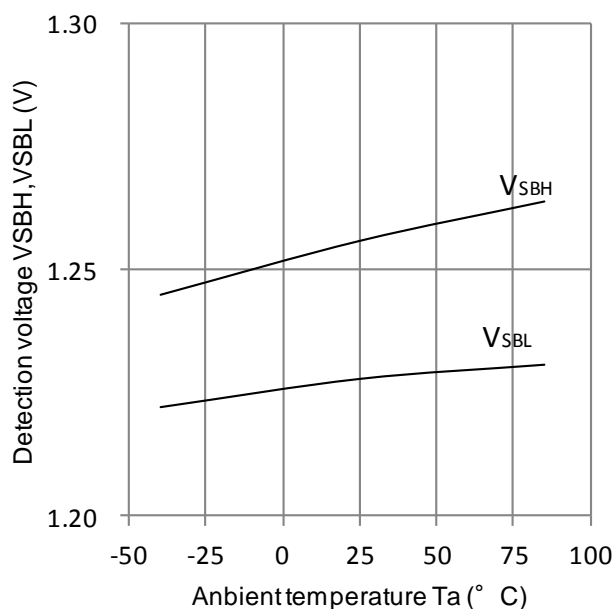


Figure 9. Detection voltage (VSB) vs. ambient temperature

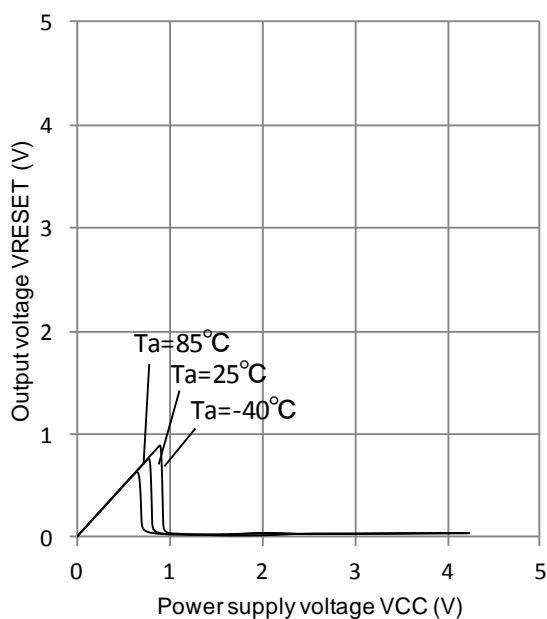


Figure 10. Output (RESET) voltage vs. power supply voltage

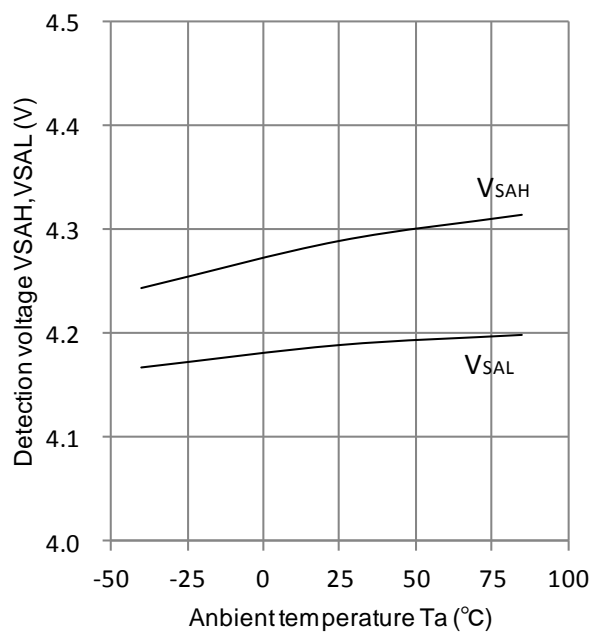


Figure 11. Detection voltage (VSA) vs. ambient temperature

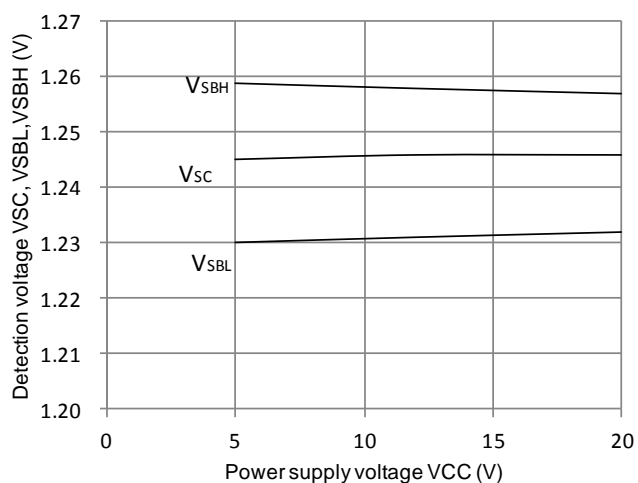


Figure 12. Detection voltage (VSB, VSC) vs. Power supply voltage

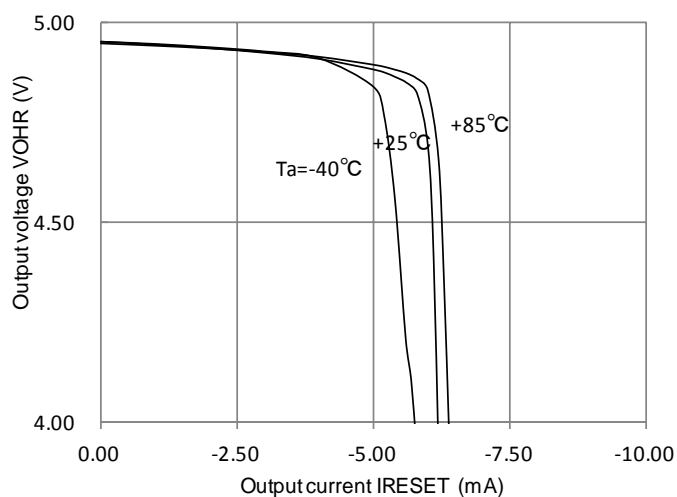


Figure 13. Reset voltage (RESET) vs. output current

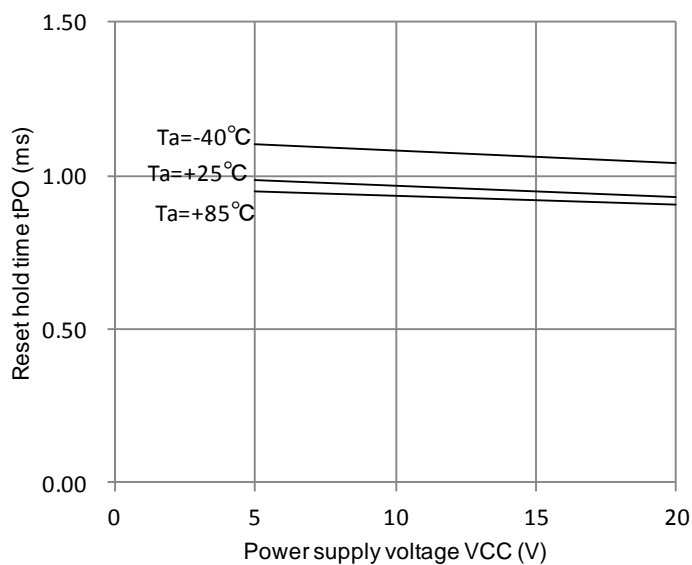


Figure 14. Reset hold time vs. power supply voltage  
( $C_T = 0.01\mu\text{F}$ )

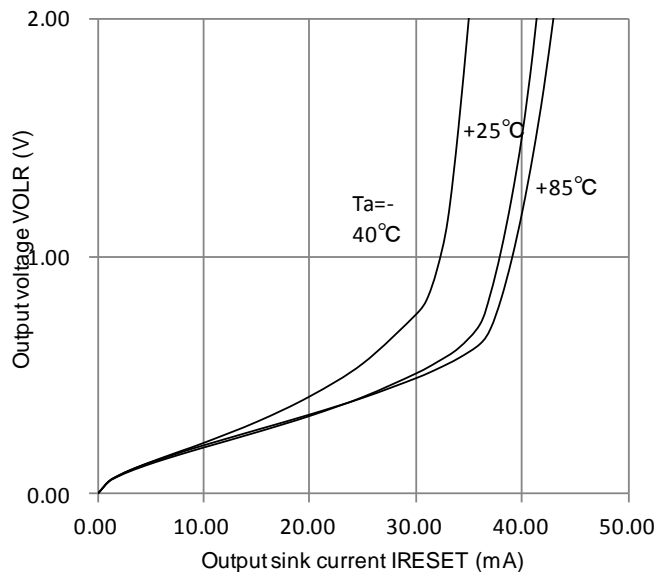


Figure 15. Output (RESET) voltage vs. output current

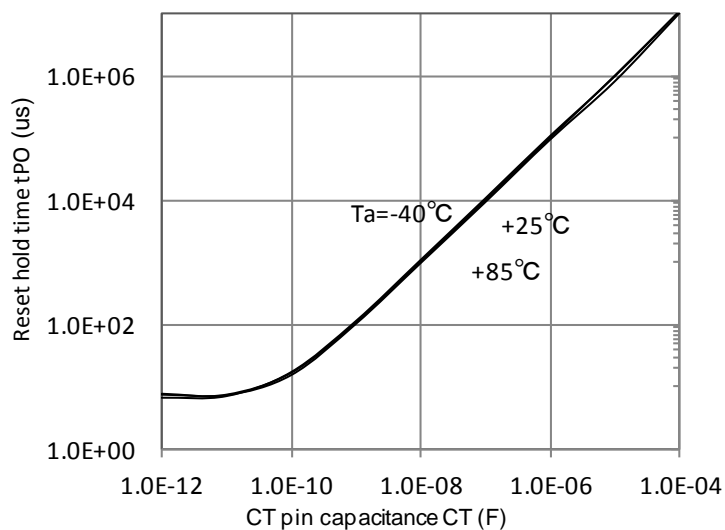


Figure 16.  $C_T$  pin capacitance vs. reset hold time

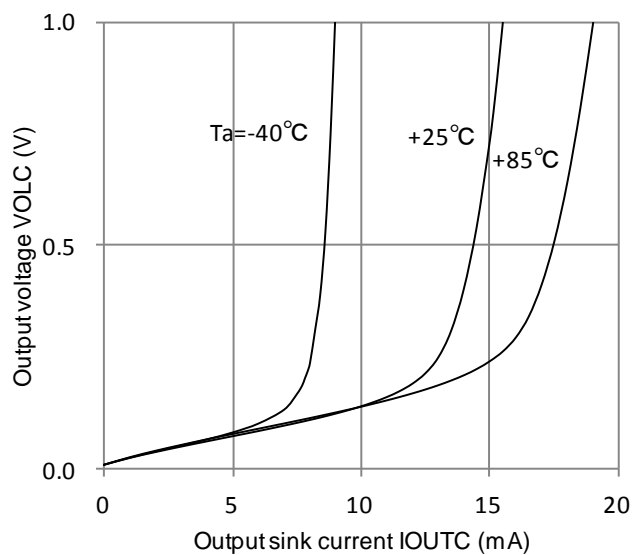


Figure 17. Output voltage (OUTC) vs. output current



# ●Application Examples

## ①5V Power Supply Monitor

Monitored by VSA. Detection threshold voltage is VSAL and VSAH

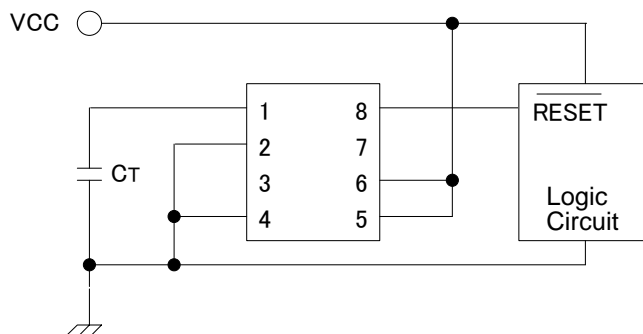


Figure 18. Application Example1

## ②5V Power Supply Voltage Monitor (Externally Fine-Tuned Type)

The VSA detection voltage can be adjusted externally.

External resistance R1 and R2 are set sufficiently lower than the IC internal partial voltage resistance (120kΩ, 50kΩ), so that the detection voltage can be set using the ratio between external resistance R1 and R2. External resistance R1 and R2 should be set to values that can cancel the variation of temperature variations and internal resistance characteristics of the IC.(below 10kΩ)

• R<sub>1</sub>, R<sub>2</sub> calculation formula (when R<sub>1</sub><<120kΩ, R<sub>2</sub><<50kΩ)

$$V_{SAL} \approx (R_1 + R_2) \times V_{SB} / R_2 [V], V_{SAH} \approx (R_1 + R_2) \times (V_{SB} + V_{HYSB}) / R_2 [V]$$

R <sub>1</sub> (kΩ)	R <sub>2</sub> (kΩ)	Detection voltage: V <sub>SAL</sub> (V)	Detection voltage: V <sub>SAH</sub> (V)
10	3.9	4.37	4.47
9.1	3.9	4.11	4.20

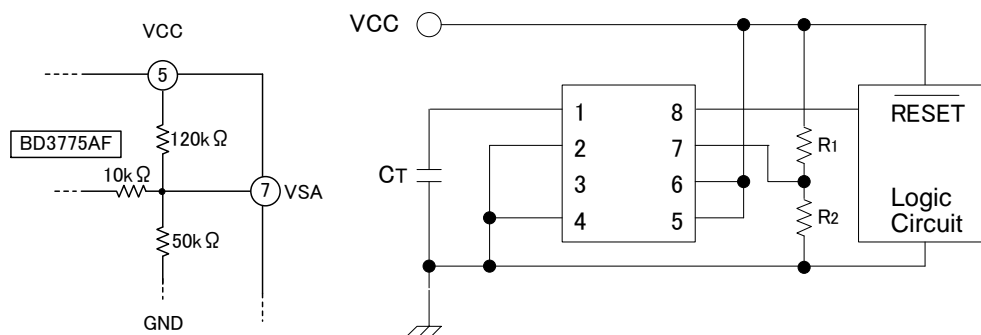


Figure 19. Application Example 2

## ③Arbitrary Voltage Supply Monitor

(1)Case:  $V_{CC} \leq 18V$ 

- Detection Voltage can be set by R1 and R2.  
Detection Voltage  $= (R_1 + R_2) \times V_{SB} / R_2$
- Connect Pin 7 to VCC when VCC less than 4.45V.
- Pin 7 can be opened when VCC greater than 4.45V  
Power Dissipation can be reduced.

Note : Hysteresis of 28mV at VSB at termination is available.

Hysteresis width dose not depend on (R1 + R2).

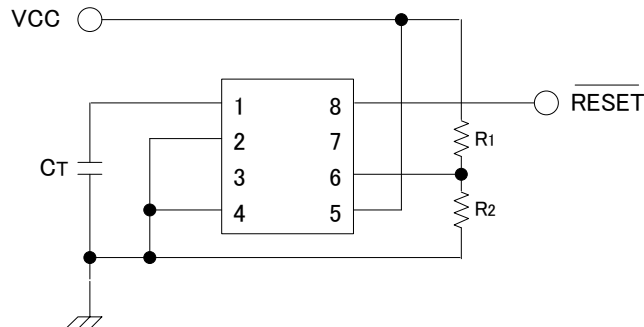


Figure 20. Application Example 3-1

(2) Monitoring  $V_{CC} > 18V$ 

- Detection Voltage can be set by R1 and R2.  
Detection Voltage  $= (R_1 + R_2) \times V_{SB} / R_2$
- The RESET\_B signal output is  $\approx 0V$  (low level) and  $\approx 5V$  (high level). VCC voltage cannot be output. Do not pull up RESET\_B to VCC

Changing the resistance ratio between R4 and R5 changes the constant voltage output, thereby changing the voltage of the high level RESET\_B output. Note that the constant voltage output should not exceed 18V. • R4, R5

- The 5V output can be used as a power supply for control circuits with low current consumption.
- In setting the R3 resistance level, caution should be given to the power consumption in the resistor. The table below lists sample resistance values for reference (using 1/4  $\Omega$  resistance).

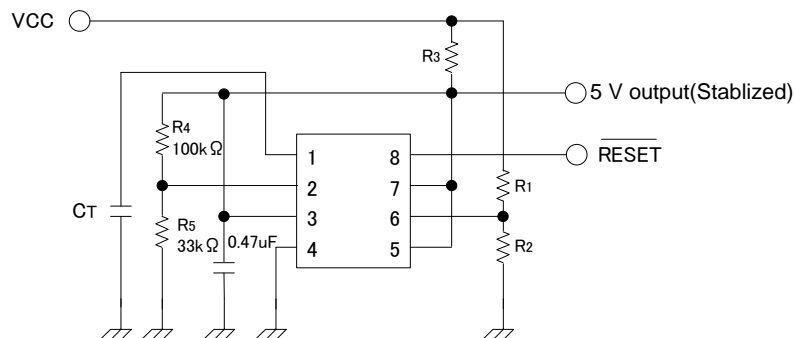


Figure 21. Application Example 3-2

④5V and 12V Power Supply Monitor (2 types of power supply monitor VCC1 = 5V, VCC2 =12V)

- 5V is monitored by VSA. Detection voltage is about 4.2V
- 12V is monitored by VSB. When  $R1 = 390\text{ k}\Omega$  and  $R2 = 62\text{ k}\Omega$ , Detection voltage is about 9.0V. Generally the detection voltage is determined by the following equation.

$$\text{Detection Voltage} = (R_1 + R_2) \times V_{SB} / R_2$$

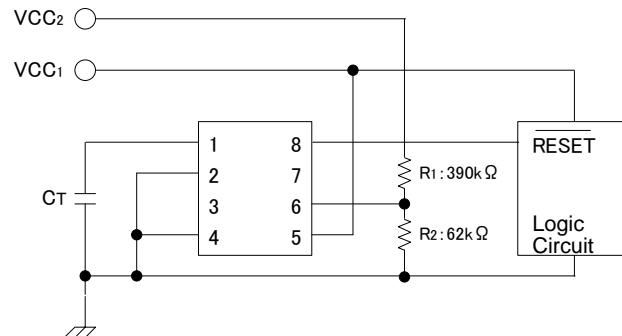


Figure 22. Application Example 4

⑤ 5V and 12V Power Supply Monitor (RESET\_B signal is generated by 5V, VCC1 = 5V, VCC2 = 12V)

- 5V is monitored by VSA, and generates RESET\_B signal when VSA detects voltage sagging.
- 12V is monitored by VSC, and generates its detection signal at OUTC
- The detection voltage of 12V monitoring and its hysteresis is determined by the following equations.

$$\text{Detection voltage} = \frac{R_1 + R_2 + R_3}{R_2 + R_3} \times V_{SC} \quad (8.95V \text{ in the circuit above})$$

$$\text{Hysteresis width} = \frac{R_1(R_3 - R_3/R_4)}{(R_2 + R_3)(R_2 + R_3/R_4)} \times V_{SC} \quad (200\text{mV in the circuit above})$$

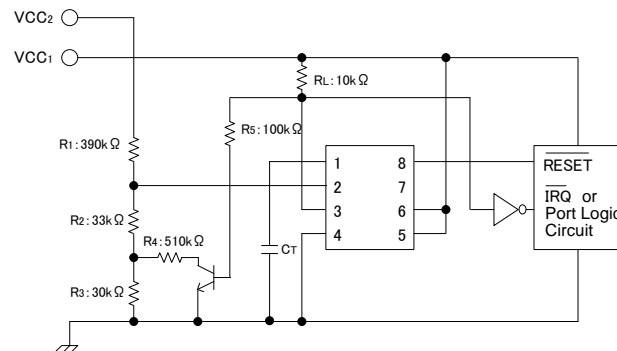


Figure 23. Application Example 5

### ⑥5V Power Supply Monitor with forced RESET input (VCC = 5V)

RESIN is a TTL compatible input

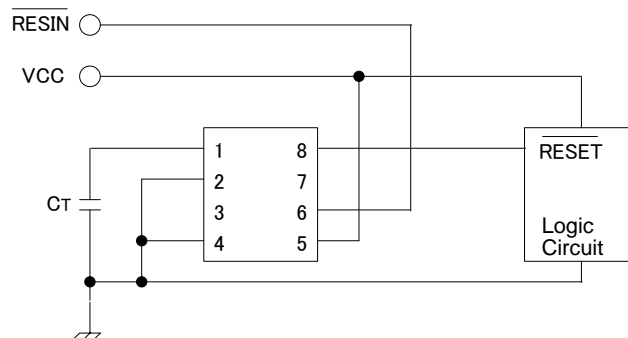


Figure 24. Application Example 6

### ⑦ 5V Power Supply Monitor with Non-inverted RESET

In this case, Comparator C is used to invert RESET signal. OUTC is an open-collector output. RL is used a pull-up resistor.

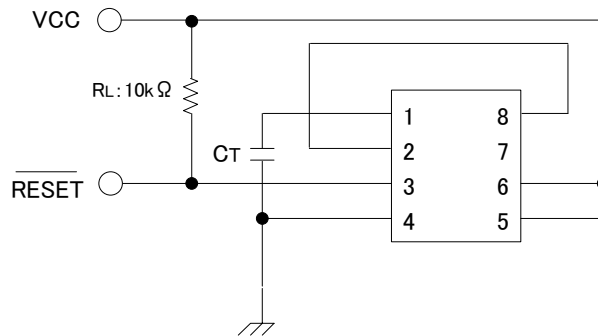


Figure 25. Application Example 7

### ⑧ Supply Voltage Monitoring with Delayed Trigger

When the voltage shown in the diagram below is applied at VCC, the minimum value of the input pulse width is increased to 65μs (when C1 = 1000pF).

The formula for calculating the minimum value of the input pulse width [Tp] is:

$$T_p [\mu s] \approx 6.5 \times 10^{-2} \times C_1 [pF]$$

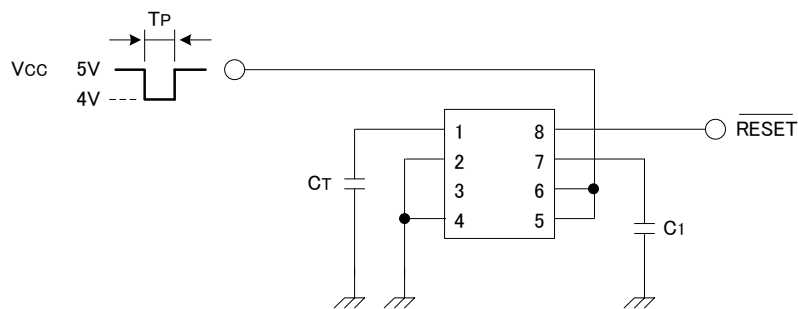


Figure 26. Application Example 8

### ⑨ Dual (Positive/Negative) Power Supply Voltage Monitoring (VCC = 5V, VEE = Negative Power Supply)

Monitors a 5V and a negative (any given level) power supply. R1, R2, and R3 should be the same value.

$$\text{Detection Voltage} = V_{SB} - V_{SB} \times R_4/R_3$$

Example if  $V_{EE} = -5V, R_4 = 91k\Omega$

Then the detected voltage = -4.37V

In cases where VEE may be output when VCC is not output, it is necessary to use a Schottky barrier diode (SBD).

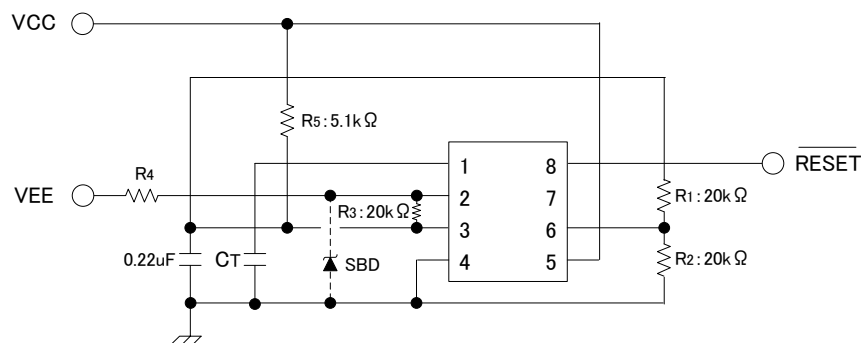


Figure 27. Application Example 9

## ⑩ Reference Voltage Generation and Voltage Sagging Detection

## (1) 9V Reference Voltage Generation and 5V/9V Monitoring

Detection Voltage = 7.2V

In the above examples, the output voltage and the detection voltage are determined by the following equations:

$$\text{Detection Voltage} = (R_1 + R_2) \times V_{SB} / R_2$$

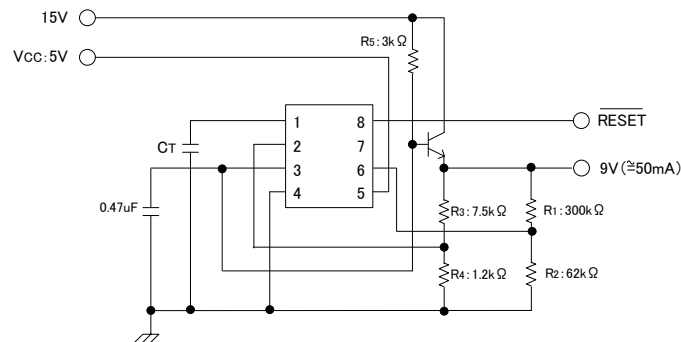


Figure 28. Application Example 10-1

## (2) 5V Reference Voltage Generation and 5V Monitoring (No.1)

Detection Voltage = 4.2V

In the above examples, the output voltage and the detection voltage are determined by the following equations:

$$\text{Detection Voltage} = (R_3 + R_4) \times V_{SC} / R_4$$

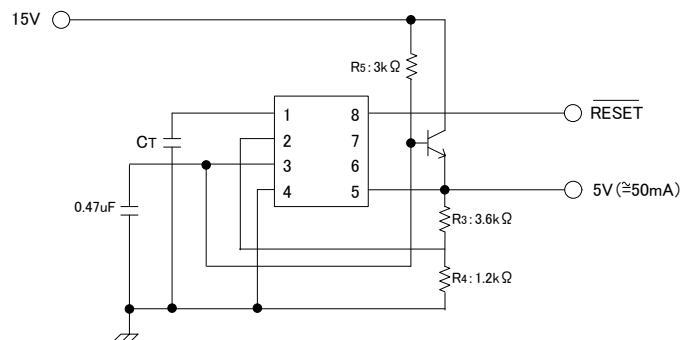


Figure 29. Application Example 10-2

## (3) 5V Reference Voltage Generation and 5V Monitoring (No. 2)

The value of R1 should be calculated from the current consumption of the MB3771, the current flowing at R2 and R3, and the 5V output current.

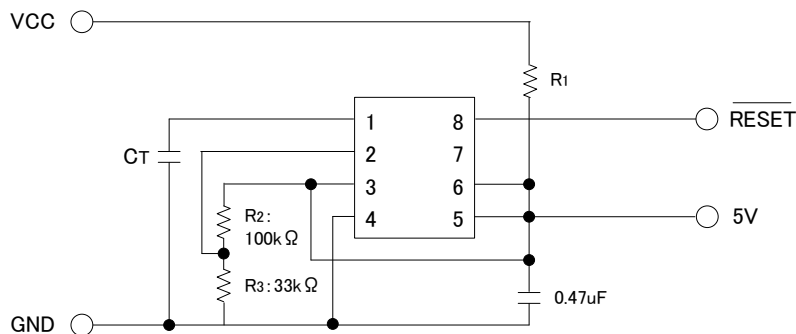


Figure 30. Application Example 10-3

## (4) 1.245V Reference Voltage Generation and 5V Monitoring

Resistor R1 determines Reference current. Using 1.2k $\Omega$  as R1, reference current is about 2mA.

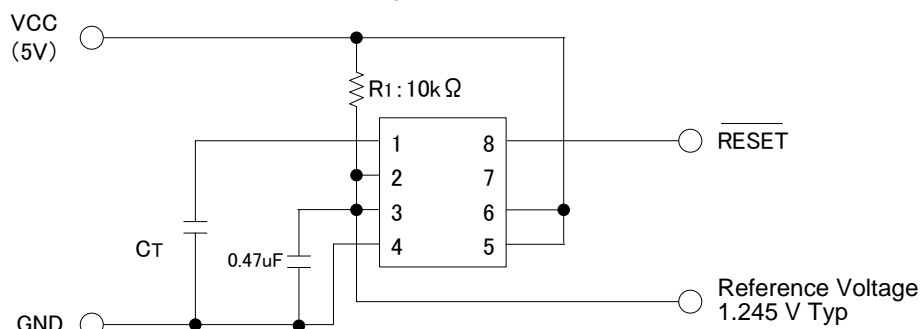


Figure 31. Application Example 10-4

● Power Dissipation

It is shown below reducing characteristics of power dissipation to mount 70mm × 70mm × 1.6mm<sup>t</sup>, 1layer PCB.  
Junction temperature must be designed not to exceed 150°C.

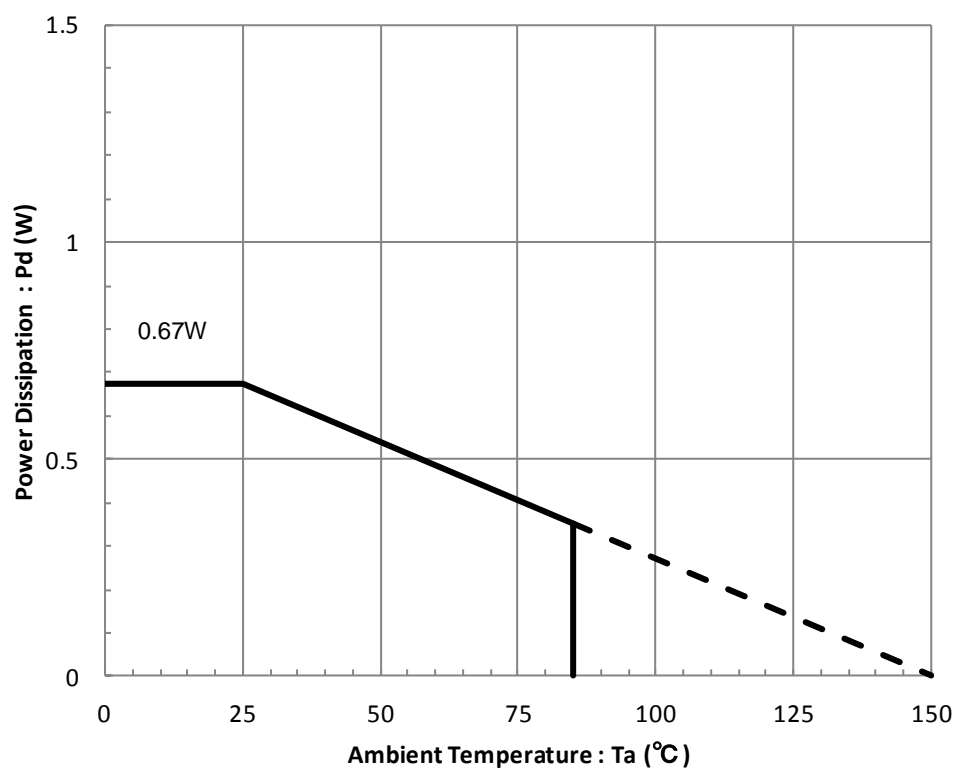


Figure 32. Power Dissipation(70mm × 70mm × 1.6mm<sup>t</sup> 1layer PCB)

● I/O equivalent circuit

Pin.No	Pin Name	Pin Equivalent Circuit	Pin.No	Pin Name	Pin Equivalent Circuit
1	CT		2	VSC	
3	OUTC		6	VSB	
7	VSA		8	RESET_B	

Figure 33. I/O equivalent circuit



## Operational Notes

### 1. Reverse Connection of Power Supply

Connecting the power supply in reverse polarity can damage the IC. Take precautions against reverse polarity when connecting the power supply, such as mounting an external diode between the power supply and the IC's power supply pins.

### 2. Power Supply Lines

Design the PCB layout pattern to provide low impedance supply lines. Furthermore, connect a capacitor to ground at all power supply pins. Consider the effect of temperature and aging on the capacitance value when using electrolytic capacitors.

### 3. Ground Voltage

Ensure that no pins are at a voltage below that of the ground pin at any time, even during transient condition.

### 4. Ground Wiring Pattern

When using both small-signal and large-current ground traces, the two ground traces should be routed separately but connected to a single ground at the reference point of the application board to avoid fluctuations in the small-signal ground caused by large currents. Also ensure that the ground traces of external components do not cause variations on the ground voltage. The ground lines must be as short and thick as possible to reduce line impedance.

### 5. Recommended Operating Conditions

The function and operation of the IC are guaranteed within the range specified by the recommended operating conditions. The characteristic values are guaranteed only under the conditions of each item specified by the electrical characteristics.

### 6. Inrush Current

When power is first supplied to the IC, it is possible that the internal logic may be unstable and inrush current may flow instantaneously due to the internal powering sequence and delays, especially if the IC has more than one power supply. Therefore, give special consideration to power coupling capacitance, power wiring, width of ground wiring, and routing of connections.

### 7. Operation Under Strong Electromagnetic Field

Operating the IC in the presence of a strong electromagnetic field may cause the IC to malfunction.

### 8. Testing on Application Boards

When testing the IC on an application board, connecting a capacitor directly to a low-impedance output pin may subject the IC to stress. Always discharge capacitors completely after each process or step. The IC's power supply should always be turned off completely before connecting or removing it from the test setup during the inspection process. To prevent damage from static discharge, ground the IC during assembly and use similar precautions during transport and storage.

### 9. Inter-pin Short and Mounting Errors

Ensure that the direction and position are correct when mounting the IC on the PCB. Incorrect mounting may result in damaging the IC. Avoid nearby pins being shorted to each other especially to ground, power supply and output pin. Inter-pin shorts could be due to many reasons such as metal particles, water droplets (in very humid environment) and unintentional solder bridge deposited in between pins during assembly to name a few.

### 10. Unused Input Pins

Input pins of an IC are often connected to the gate of a MOS transistor. The gate has extremely high impedance and extremely low capacitance. If left unconnected, the electric field from the outside can easily charge it. The small charge acquired in this way is enough to produce a significant effect on the conduction through the transistor and cause unexpected operation of the IC. So unless otherwise specified, unused input pins should be connected to the power supply or ground line.

## Operational Notes – continued

**11. Regarding the Input Pin of the IC**

This monolithic IC contains P+ isolation and P substrate layers between adjacent elements in order to keep them isolated. P-N junctions are formed at the intersection of the P layers with the N layers of other elements, creating a parasitic diode or transistor. For example (refer to figure below):

When  $GND > Pin\ A$  and  $GND > Pin\ B$ , the P-N junction operates as a parasitic diode.

When  $GND > Pin\ B$ , the P-N junction operates as a parasitic transistor.

Parasitic diodes inevitably occur in the structure of the IC. The operation of parasitic diodes can result in mutual interference among circuits, operational faults, or physical damage. Therefore, conditions that cause these diodes to operate, such as applying a voltage lower than the GND voltage to an input pin (and thus to the P substrate) should be avoided.

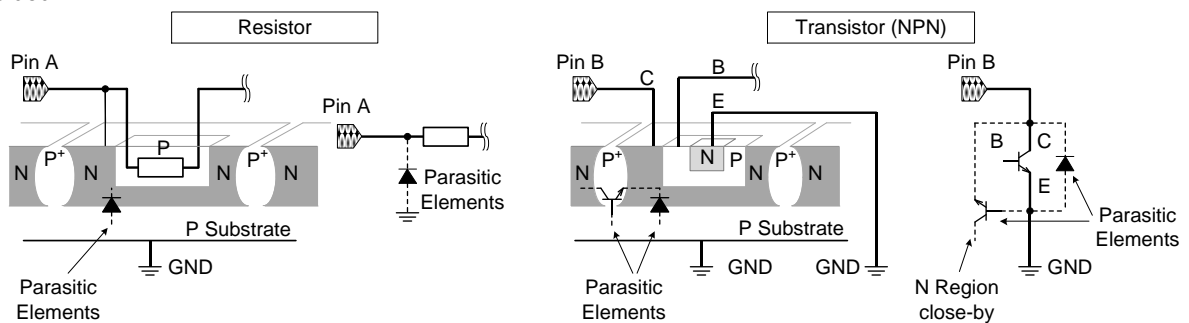


Figure 34. Example of monolithic IC structure

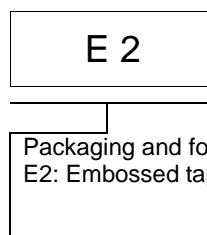
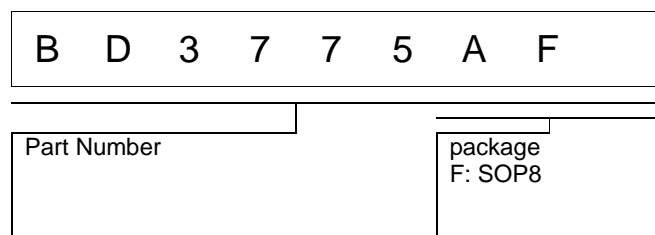
**12. Ceramic Capacitor**

When using a ceramic capacitor, determine a capacitance value considering the change of capacitance with temperature and the decrease in nominal capacitance due to DC bias and others.

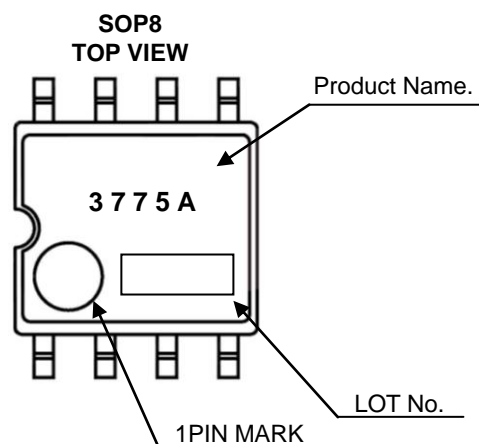
**13. Area of Safe Operation (ASO)**

Operate the IC such that the output voltage, output current, and the maximum junction temperature rating are all within the Area of Safe Operation (ASO).

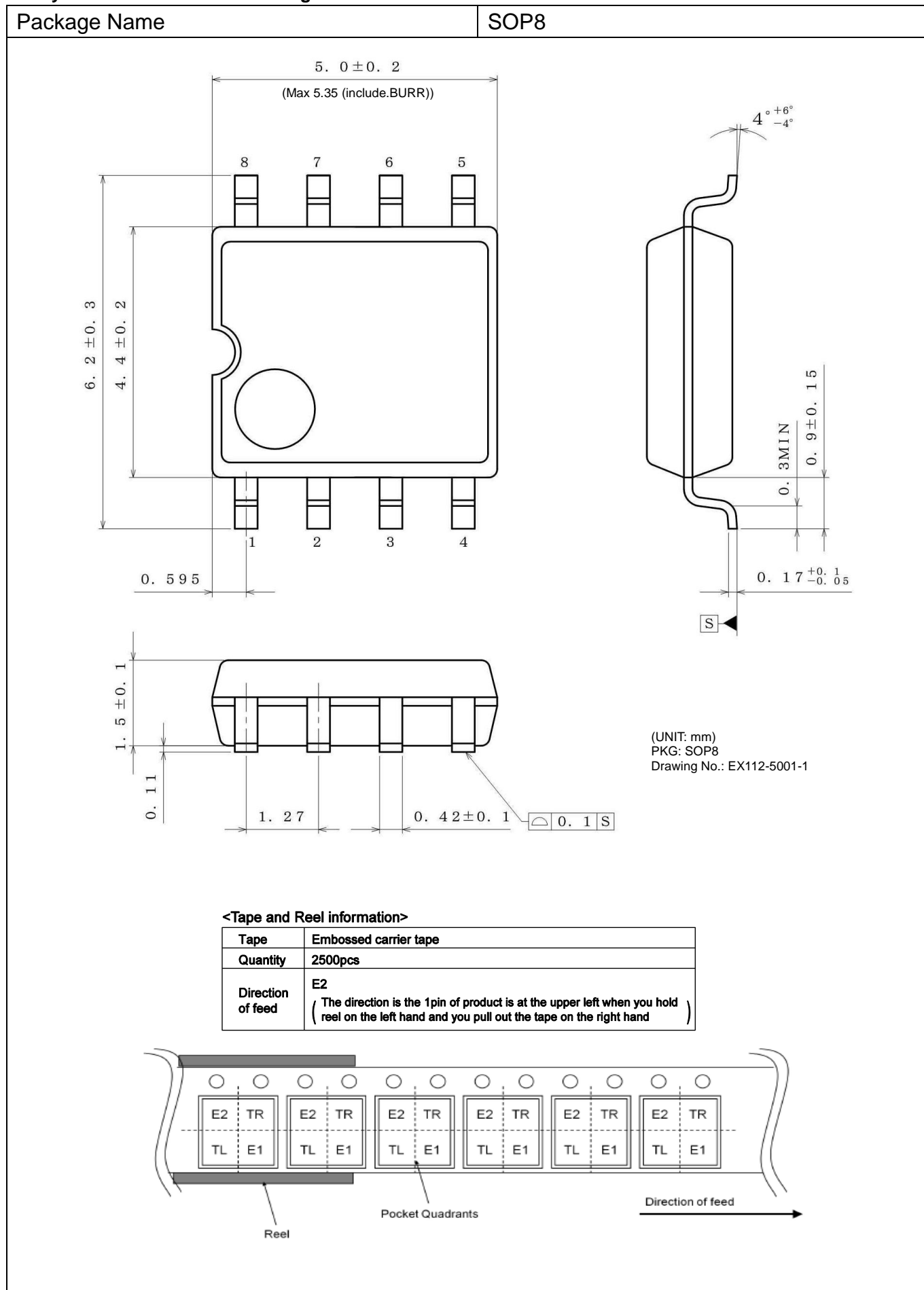
## ● Ordering part number



## ● Marking Diagram



# ● Physical Dimension and Packing Information



## ●Revision History

Date	Revision	Changes
21.Nov.2012	001	New Release
26.Nov.2012	002	Correction of Typographical Error
11.SEP.2017	003	Correction of Typographical Error

# Notice

## Precaution on using ROHM Products

- Our Products are designed and manufactured for application in ordinary electronic equipments (such as AV equipment, OA equipment, telecommunication equipment, home electronic appliances, amusement equipment, etc.). If you intend to use our Products in devices requiring extremely high reliability (such as medical equipment <sup>(Note 1)</sup>, transport equipment, traffic equipment, aircraft/spacecraft, nuclear power controllers, fuel controllers, car equipment including car accessories, safety devices, etc.) and whose malfunction or failure may cause loss of human life, bodily injury or serious damage to property ("Specific Applications"), please consult with the ROHM sales representative in advance. Unless otherwise agreed in writing by ROHM in advance, ROHM shall not be in any way responsible or liable for any damages, expenses or losses incurred by you or third parties arising from the use of any ROHM's Products for Specific Applications.

(Note1) Medical Equipment Classification of the Specific Applications

JAPAN	USA	EU	CHINA
CLASS III	CLASS III	CLASS II b	CLASS III
CLASS IV		CLASS III	

- ROHM designs and manufactures its Products subject to strict quality control system. However, semiconductor products can fail or malfunction at a certain rate. Please be sure to implement, at your own responsibilities, adequate safety measures including but not limited to fail-safe design against the physical injury, damage to any property, which a failure or malfunction of our Products may cause. The following are examples of safety measures:
  - Installation of protection circuits or other protective devices to improve system safety
  - Installation of redundant circuits to reduce the impact of single or multiple circuit failure
- Our Products are designed and manufactured for use under standard conditions and not under any special or extraordinary environments or conditions, as exemplified below. Accordingly, ROHM shall not be in any way responsible or liable for any damages, expenses or losses arising from the use of any ROHM's Products under any special or extraordinary environments or conditions. If you intend to use our Products under any special or extraordinary environments or conditions (as exemplified below), your independent verification and confirmation of product performance, reliability, etc. prior to use, must be necessary:
  - Use of our Products in any types of liquid, including water, oils, chemicals, and organic solvents
  - Use of our Products outdoors or in places where the Products are exposed to direct sunlight or dust
  - Use of our Products in places where the Products are exposed to sea wind or corrosive gases, including Cl<sub>2</sub>, H<sub>2</sub>S, NH<sub>3</sub>, SO<sub>2</sub>, and NO<sub>2</sub>
  - Use of our Products in places where the Products are exposed to static electricity or electromagnetic waves
  - Use of our Products in proximity to heat-producing components, plastic cords, or other flammable items
  - Sealing or coating our Products with resin or other coating materials
  - Use of our Products without cleaning residue of flux (even if you use no-clean type fluxes, cleaning residue of flux is recommended); or Washing our Products by using water or water-soluble cleaning agents for cleaning residue after soldering
  - Use of the Products in places subject to dew condensation
- The Products are not subject to radiation-proof design.
- Please verify and confirm characteristics of the final or mounted products in using the Products.
- In particular, if a transient load (a large amount of load applied in a short period of time, such as pulse. is applied, confirmation of performance characteristics after on-board mounting is strongly recommended. Avoid applying power exceeding normal rated power; exceeding the power rating under steady-state loading condition may negatively affect product performance and reliability.
- De-rate Power Dissipation depending on ambient temperature. When used in sealed area, confirm that it is the use in the range that does not exceed the maximum junction temperature.
- Confirm that operation temperature is within the specified range described in the product specification.
- ROHM shall not be in any way responsible or liable for failure induced under deviant condition from what is defined in this document.

## Precaution for Mounting / Circuit board design

- When a highly active halogenous (chlorine, bromine, etc.) flux is used, the residue of flux may negatively affect product performance and reliability.
- In principle, the reflow soldering method must be used on a surface-mount products, the flow soldering method must be used on a through hole mount products. If the flow soldering method is preferred on a surface-mount products, please consult with the ROHM representative in advance.

For details, please refer to ROHM Mounting specification

## Precautions Regarding Application Examples and External Circuits

1. If change is made to the constant of an external circuit, please allow a sufficient margin considering variations of the characteristics of the Products and external components, including transient characteristics, as well as static characteristics.
2. You agree that application notes, reference designs, and associated data and information contained in this document are presented only as guidance for Products use. Therefore, in case you use such information, you are solely responsible for it and you must exercise your own independent verification and judgment in the use of such information contained in this document. ROHM shall not be in any way responsible or liable for any damages, expenses or losses incurred by you or third parties arising from the use of such information.

## Precaution for Electrostatic

This Product is electrostatic sensitive product, which may be damaged due to electrostatic discharge. Please take proper caution in your manufacturing process and storage so that voltage exceeding the Products maximum rating will not be applied to Products. Please take special care under dry condition (e.g. Grounding of human body / equipment / solder iron, isolation from charged objects, setting of ionizer, friction prevention and temperature / humidity control).

## Precaution for Storage / Transportation

1. Product performance and soldered connections may deteriorate if the Products are stored in the places where:
  - [a] the Products are exposed to sea winds or corrosive gases, including Cl<sub>2</sub>, H<sub>2</sub>S, NH<sub>3</sub>, SO<sub>2</sub>, and NO<sub>2</sub>
  - [b] the temperature or humidity exceeds those recommended by ROHM
  - [c] the Products are exposed to direct sunshine or condensation
  - [d] the Products are exposed to high Electrostatic
2. Even under ROHM recommended storage condition, solderability of products out of recommended storage time period may be degraded. It is strongly recommended to confirm solderability before using Products of which storage time is exceeding the recommended storage time period.
3. Store / transport cartons in the correct direction, which is indicated on a carton with a symbol. Otherwise bent leads may occur due to excessive stress applied when dropping of a carton.
4. Use Products within the specified time after opening a humidity barrier bag. Baking is required before using Products of which storage time is exceeding the recommended storage time period.

## Precaution for Product Label

A two-dimensional barcode printed on ROHM Products label is for ROHM's internal use only.

## Precaution for Disposition

When disposing Products please dispose them properly using an authorized industry waste company.

## Precaution for Foreign Exchange and Foreign Trade act

Since concerned goods might be fallen under listed items of export control prescribed by Foreign exchange and Foreign trade act, please consult with ROHM in case of export.

## Precaution Regarding Intellectual Property Rights

1. All information and data including but not limited to application example contained in this document is for reference only. ROHM does not warrant that foregoing information or data will not infringe any intellectual property rights or any other rights of any third party regarding such information or data.
2. ROHM shall not have any obligations where the claims, actions or demands arising from the combination of the Products with other articles such as components, circuits, systems or external equipment (including software).
3. No license, expressly or implied, is granted hereby under any intellectual property rights or other rights of ROHM or any third parties with respect to the Products or the information contained in this document. Provided, however, that ROHM will not assert its intellectual property rights or other rights against you or your customers to the extent necessary to manufacture or sell products containing the Products, subject to the terms and conditions herein.

## Other Precaution

1. This document may not be reprinted or reproduced, in whole or in part, without prior written consent of ROHM.
2. The Products may not be disassembled, converted, modified, reproduced or otherwise changed without prior written consent of ROHM.
3. In no event shall you use in any way whatsoever the Products and the related technical information contained in the Products or this document for any military purposes, including but not limited to, the development of mass-destruction weapons.
4. The proper names of companies or products described in this document are trademarks or registered trademarks of ROHM, its affiliated companies or third parties.

**General Precaution**

1. Before you use our Products, you are requested to carefully read this document and fully understand its contents. ROHM shall not be in any way responsible or liable for failure, malfunction or accident arising from the use of any ROHM's Products against warning, caution or note contained in this document.
2. All information contained in this document is current as of the issuing date and subject to change without any prior notice. Before purchasing or using ROHM's Products, please confirm the latest information with a ROHM sales representative.
3. The information contained in this document is provided on an "as is" basis and ROHM does not warrant that all information contained in this document is accurate and/or error-free. ROHM shall not be in any way responsible or liable for any damages, expenses or losses incurred by you or third parties resulting from inaccuracy or errors of or concerning such information.