

DC-AC IH Half-Bridge Inverter Po=10kW

DC-AC IH Half-Bridge Inverter Po=10kW Simulation Circuit

Input : $V_{in}=800V_{dc}$

Output : $I_o=70A_{ac}$

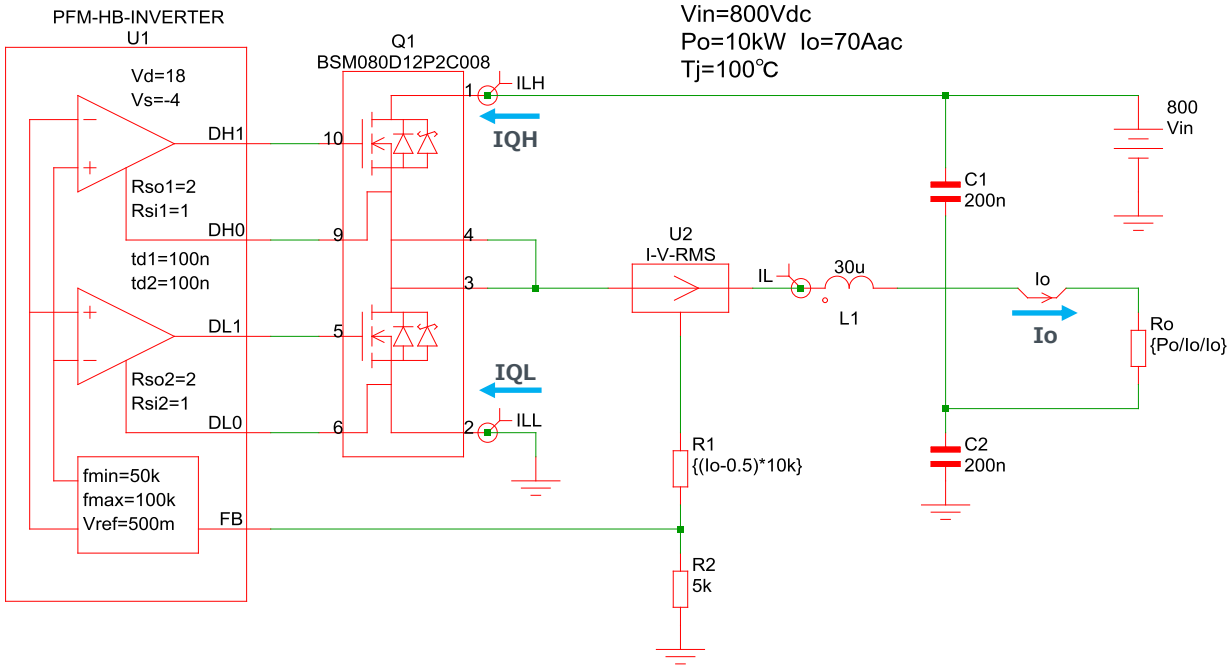
Gate Drive : $V_d=18V$
 $R_{source}=2\Omega$
 $R_{sink}=1\Omega$

Q1 : BSM080D12P2C008
SiC Power Module
(1200V 80A)

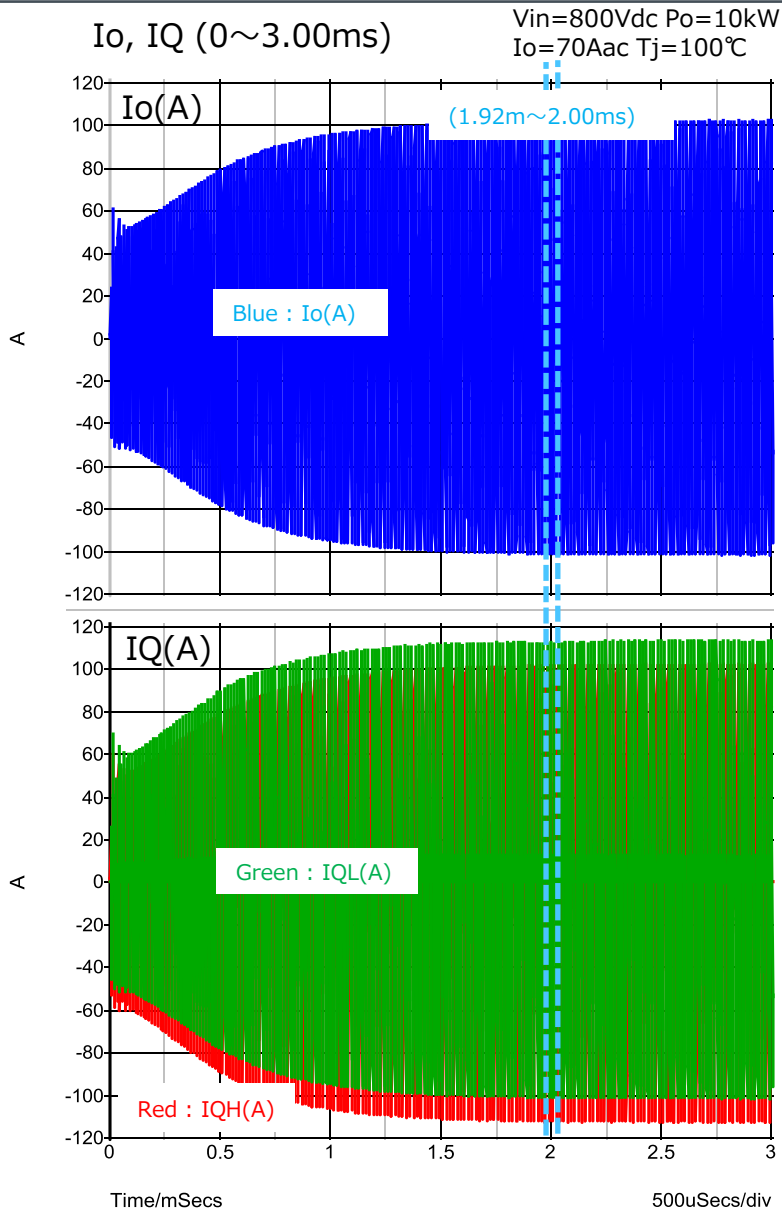
L1 : 30uH

C1,C2 : 200nF

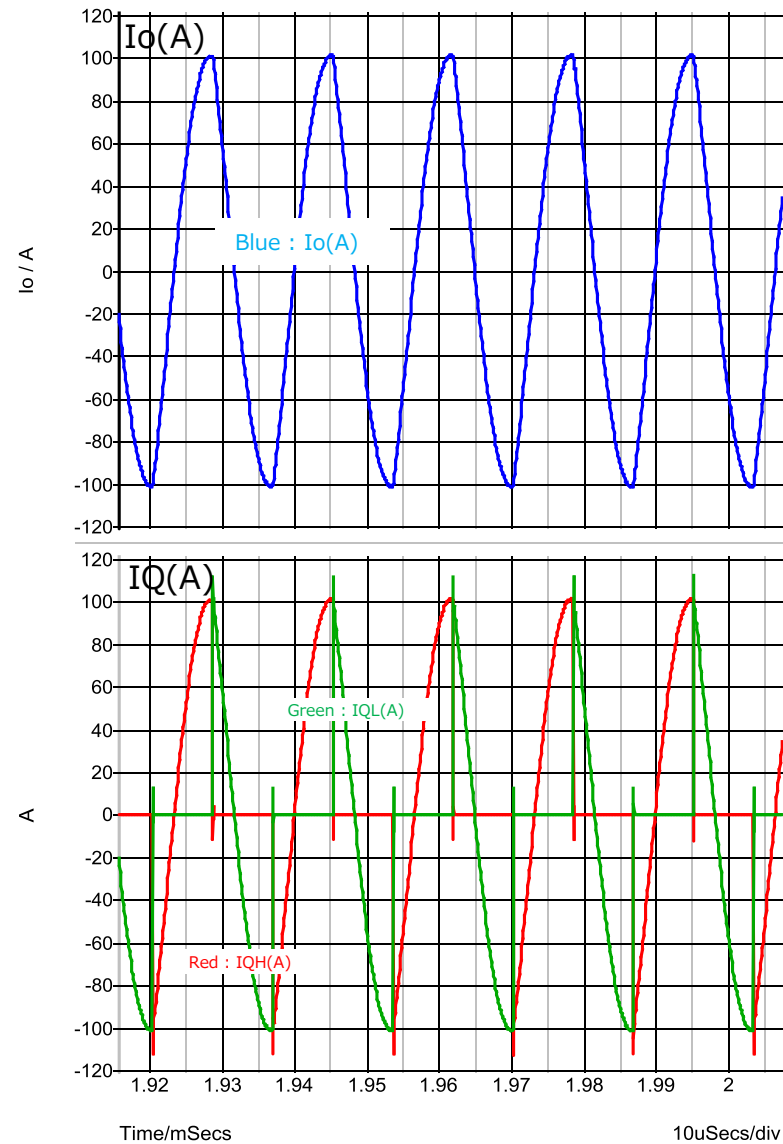
Tj=100°C



Simulation Waveform



Expansion (1.92m~2.00ms)



Efficiency, Power Dissipation

