

---

# ML7425A

---

Sub-GHz RF low-power transceiver IC

---

## ■ Overview

The ML7425A is a low-power sub-GHz radio transceiver LSI which integrates RF, IF, MODEM, and HOST interface into a single chip. RF frequency supports 145 to 1,020MHz range. In addition, a programmable channel-selection filter can support a reception band of 1.7kHz to 1,200kHz. The ML7425A can be used for F-mode (434MHz), and S/T/C/R mode (868MHz) in the European telemetry standard (Wireless M-Bus), Japanese low-power security system radio stations and specified low-power radio stations (RCR STD-30, STD-T67, STD-T108), and worldwide Sigfox standards. The ML7425A includes IEEE802.15.4g and Wireless M-Bus packet handling functions.

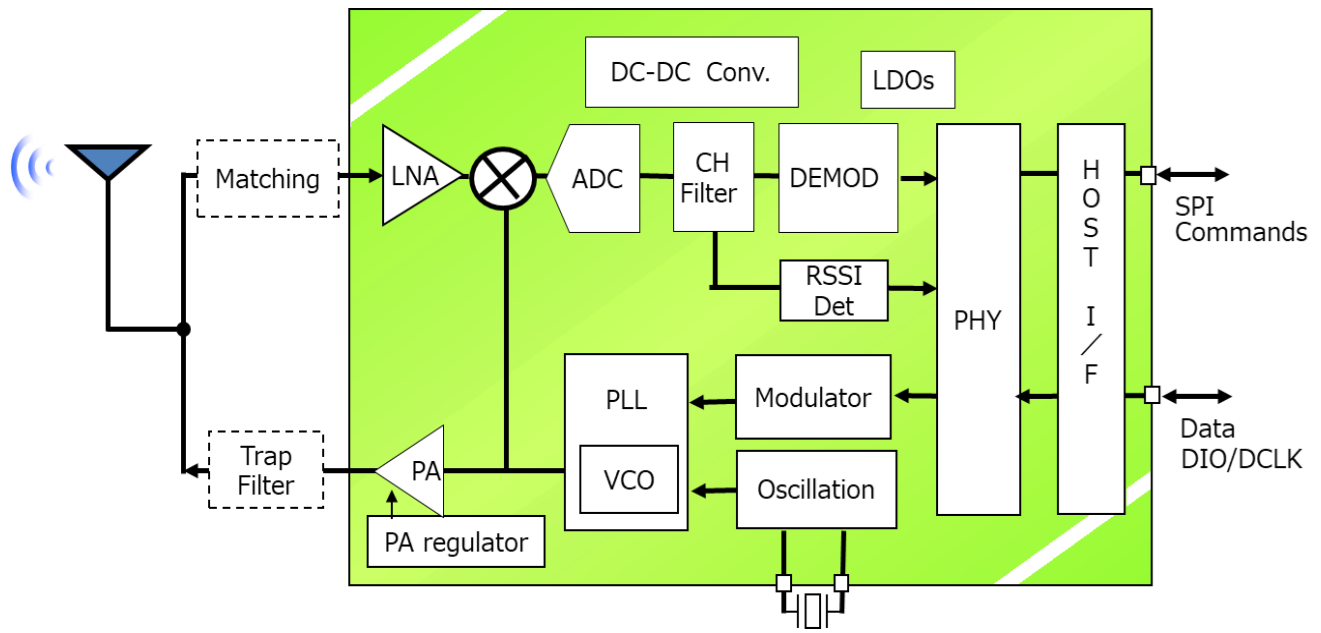
## ■ Features

- Compliant with wireless regulations of each country
  - Japanese: RCR STD-30, ARIB STD-T67, ARIB STD-T108
  - Europe: ETSI EN 300 220, ETSI EN 54-25
  - North America: FCC CFR47 Part 15, FCC CFR47 Part 90, 24, 101
- Support standards
  - IEEE802.15.4g/15.4aa
  - Wi-SUN
  - Wireless M-BUS
  - Sigfox Revision 2.E
- RF Frequency
  - 145MHz to 170MHz
  - 210MHz to 250MHz
  - 280MHz to 340MHz
  - 415MHz to 510MHz
  - 835MHz to 1,020MHz
- Realizes high-precision modulation by direct modulation method of fractional-N PLL
- Support modulation scheme: 2(G)FSK/4(G)FSK, ASK, OOK, BPSK (Tx only)
- Support data rate : 0.1k to 1,200kbps (2FSK: 0.1k to 600kbps/4FSK: 0.2k to 1,200kbps)
- Equipped with encoding function of NRZ, Manchester, and 3 out of 6
- Equipped with data whitening function
- Equipped with a programmable channel filter function
- Equipped with a programmable frequency deviation function
- Built-in polarity reversal function for Tx/Rx data
- Equipped with TCXO direct input function (24 to 26MHz/48MHz to 52MHz)
- On-chip crystal oscillation circuit (24 to 26MHz/48MHz to 52MHz)
- Equipped with a load capacitance adjustment function for oscillation circuit pin
- Equipped with frequency fine adjustment function (Fine-tunable with fractional-N PLL)
- Built-in synchronous serial peripheral interface(SPI)
- Built-in Tx PA with power control function
- Equipped with Tx power fine adjustment function
- Equipped with automatic ramp control of Tx power
- Equipped with external Tx PA control function

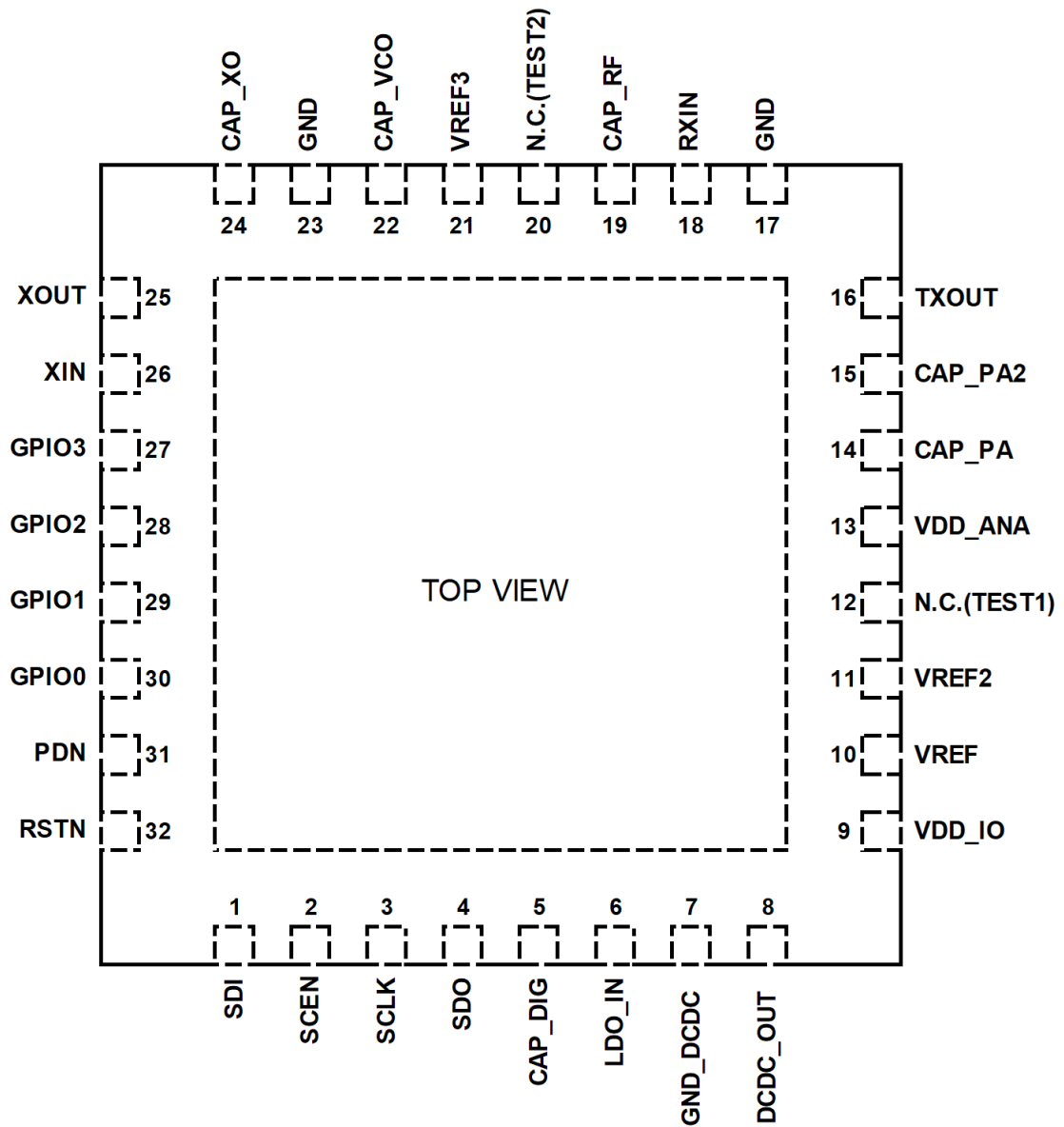
- Equipped with received signal strength indicator (RSSI) notification function and threshold judgment function
- Equipped with high speed carrier checking function
- Equipped with FEC Function
- Equipped with AFC Function
- Equipped with antenna diversity function
- Equipped with general purpose timer (2ch)
- Equipped with Test Pattern Generator (PN9, CW, 01-pattern, ALL "1", and ALL "0" are supported)
- Packet mode function
  - Supports IEEE802.15.4g Packet Format (Format C)
  - Supports Wireless M-Bus Packet Format (Format A/B)
  - Supports General-purpose Packet Format (Format C/D)
  - Supports packet length up to 255 bytes (Format A/B) and 2,047 bytes (Format C/D)
  - Built-in Tx FIFO (64 bytes) and Rx FIFO (64 bytes)
  - Detection preamble pattern setting function (Max.4 bytes)
  - Tx preamble length setting function (Max. 255 bytes)
  - SyncWord setting function (Max. 4 bytes x 2 patterns)
  - CRC Function (CRC32/CRC16/CRC8 selectable)
  - Address check function (Max. 13 bytes x 2 patterns)
    - Wireless M-Bus: C-field/M-field/A-field
    - \*Proprietary packet format is possible depending on setting
  - Supports IEEE802.15.4g ModeSwitch Packet Format
  
- Supply voltage
  - 2.6V to 3.6V (when using DCDC)
  - 1.8V to 3.6V (when not using DCDC)
  
- Operational temperature -40°C to 105°C (average operational temperature 70°C)
  
- Consumption current
 

Deep sleep mode		0.1 μA
Sleep mode		0.45 μA (registers retained)
At transmission	13dBm	27mA(Typ.) @3.3V, When using DCDC
At reception		11mA(Typ.) @3.3V, When using DCDC
  
- Package
  - 32-pin WQFN (5mm x 5mm) 0.5mm
  - Lead-free, RoHS compliance
  
- Product Name                    ML7425AGD
  
- Application
  - Remote control
  - Home, Building security
  - Sensor networks
  - Smart Meter
  - Logistics Tracking
  - Infrastructure Monitoring
  - Monitoring system

■Block Diagram



## ■Pin Layout



32-pin WQFN (5mm x 5mm) 0.5mm pitch

## ■Pin Description

Pin status	Attribute definition
I : CMOS input	IS : Schmitt Trigger input pin
O : CMOS output	O : Digital output pin
OD : Open drain output	IOS : Digital input/output pin (Schmitt input)
Hi-Z : High impedance	IOA : Analog input/output pin
	IRF : RF input pin
	ORF : RF output pin
	VDD : Power supply pin
	GND : Ground

Pin No.	Pin Name	Attribute	Description
1	SDI	IS	SPI data input pin
2	SCEN	IS	SPI enable pin (H: disable, L: SPI enable)
3	SCLK	IS	SPI clock input pin
4	SDO	O	SPI data output pin
5	CAP_DIG	IOA	Pin for an internal LDO decoupling capacitor (Digital)
6	LDO_IN	VDD	Power supply pin (Regulator)
7	GND_DCDC	GND	Ground
8	DCDC_OUT	IOA	Switching regulator output pin (N.C. when DCDC is not used)
9	VDD_IO	VDD	Power supply pin (IO)
10	VREF	IOA	Pin for a decoupling capacitor 1
11	VREF2	IOA	Pin for a decoupling capacitor 2
12	N.C.(TEST1)	N.C.	Pin to open
13	VDD_ANA	VDD	Power supply pin (Analog)
14	CAP_PA	IOA	Pin for a decoupling capacitor (PA)
15	CAP_PA2	IOA	Pin for an internal LDO decoupling capacitor (PA)
16	TXOUT	ORF	RF signal output pin
17	GND	GND	Ground
18	RXIN	IRF	RF signal input pin
19	CAP_RF	IOA	Pin for an internal LDO decoupling capacitor (RF)
20	N.C.(TEST2)	N.C.	Pin to open
21	VREF3	IOA	Pin for a decoupling capacitor 3
22	CAP_VCO	IOA	Pin for an internal LDO decoupling capacitor (VCO)
23	GND	GND	Ground
24	CAP_XO	IOA	Pin for an internal LDO decoupling capacitor (XO)
25	XOUT	IOA	Pin for connecting a crystal (TCXO input pin when TCXO is used)
26	XIN	IOA	Pin for connecting a crystal (N.C when TCXO is used)
27	GPIO3	IOS	Digital input/output pin (N.C. when GPIO3 is not used)
28	GPIO2	IOS	Digital input/output pin (N.C. when GPIO2 is not used)
29	GPIO1	IOS	Digital input/output pin (N.C. when GPIO1 is not used)
30	GPIO0	IOS	Digital input/output pin (N.C. when GPIO0 is not used)
31	PDN	IS	Power-down setting pin (H: Power-down mode, L: Normal mode)
32	RSTN	IS	Reset pin (H: Normal mode, L: Reset mode)

(Note)

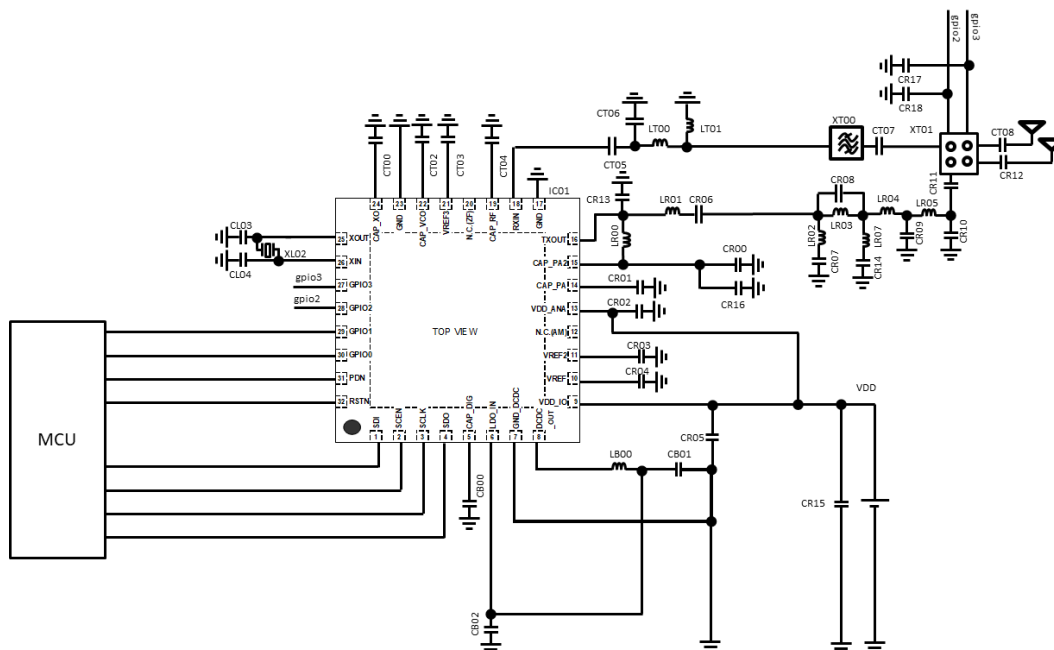
Input pins (SDI, SCEN, SCLK, PDN, RSTN) must be logically Low or High.

Input/output pins (GPIO0 to 3) should be controlled by the host microcomputer.

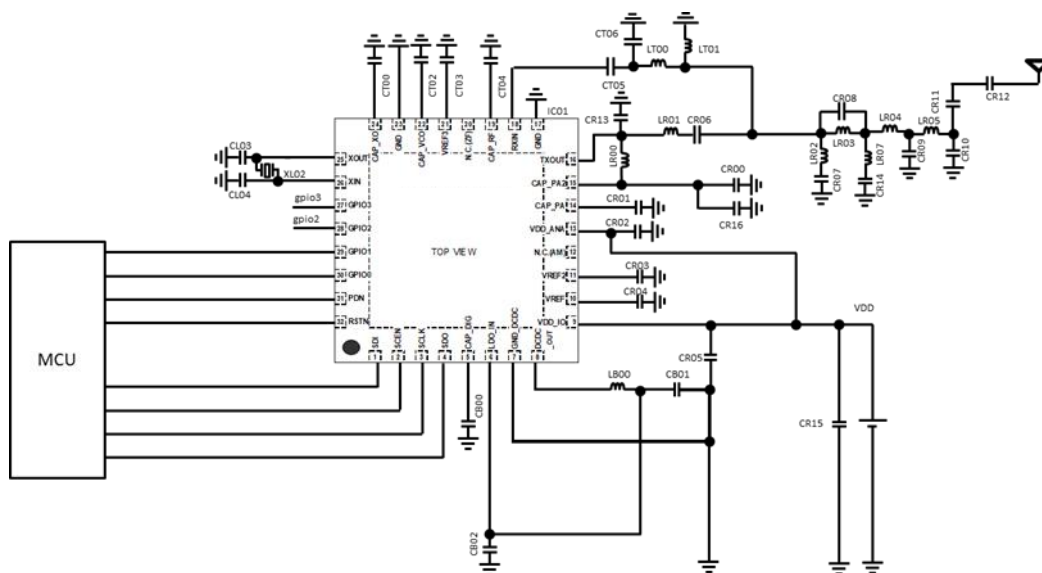
The output pin (SDO) becomes an open-drain output pin after the reset is released. And this pin can be selected as a CMOS output or an open drain output. Please switch it according to the application.

Pin No.	Pin Name	Pin status				Attribute	Description
		[At deep sleep] PDN=H RSTN=L/H	[At reset] PDN=L RSTN=L	[After reset release] PDN=L RSTN=H	[Normal mode] PDN=L RSTN=H		
1	SDI	I	I	I	I	IS	SPI data input pin
2	SCEN	I	I	I	I	IS	SPI enable pin (H: disable, L: enable)
3	SCLK	I	I	I	I	IS	SPI clock input pin
4	SDO	Hi-Z	Hi-Z	OD	OD or O	O	SPI data output pin
27	GPIO3	Hi-Z	Hi-Z	O	I or O	IOS	Digital input/output pin
28	GPIO2	Hi-Z	Hi-Z	O	I or O	IOS	Digital input/output pin
29	GPIO1	Hi-Z	Hi-Z	O	I or O	IOS	Digital input/output pin
30	GPIO0	Hi-Z	Hi-Z	O	I or O	IOS	Digital input/output pin
31	PDN	I	I	I	I	IS	Power-down setting pin (H: Power-down mode, L: Normal mode)
32	RSTN	I	I	I	I	IS	Reset pin (H: Normal mode, L: Reset mode)

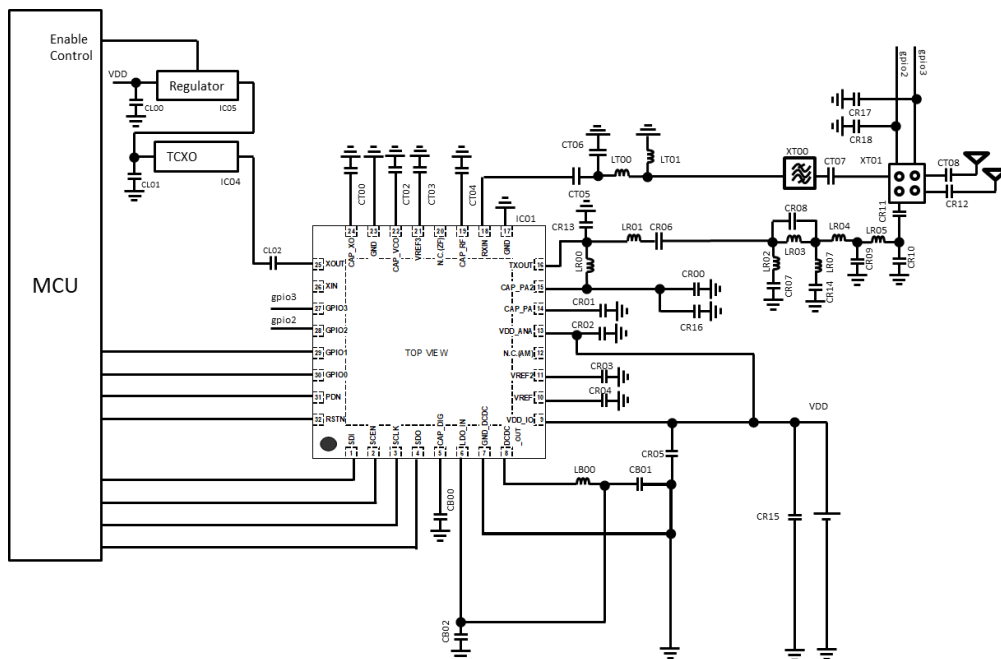
■ Reference Schematic



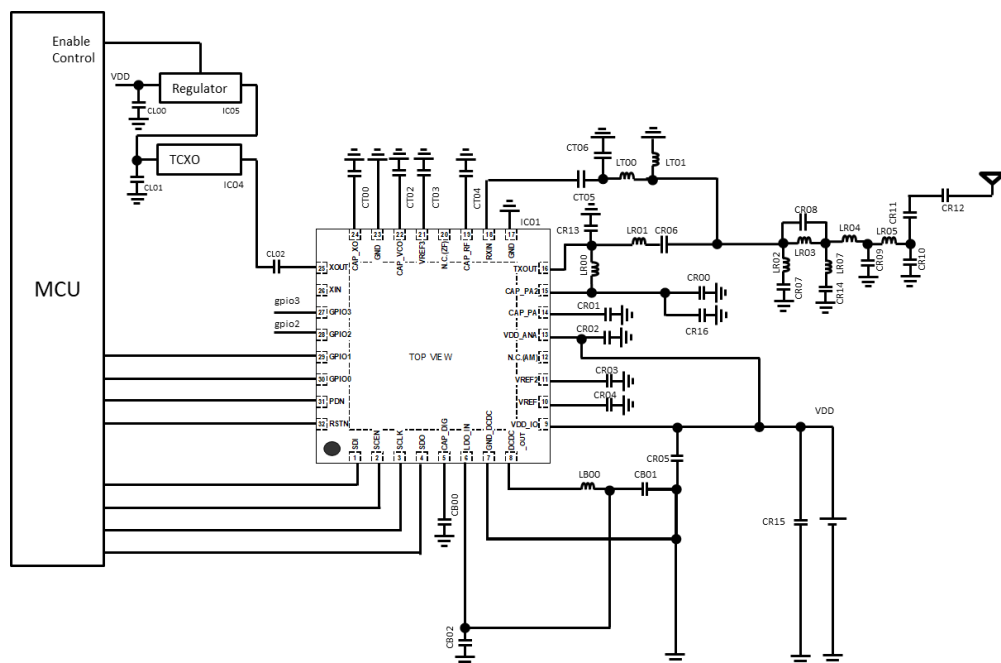
Separate Transmission and Reception Configuration (Using Crystal Oscillator and Antenna switch)



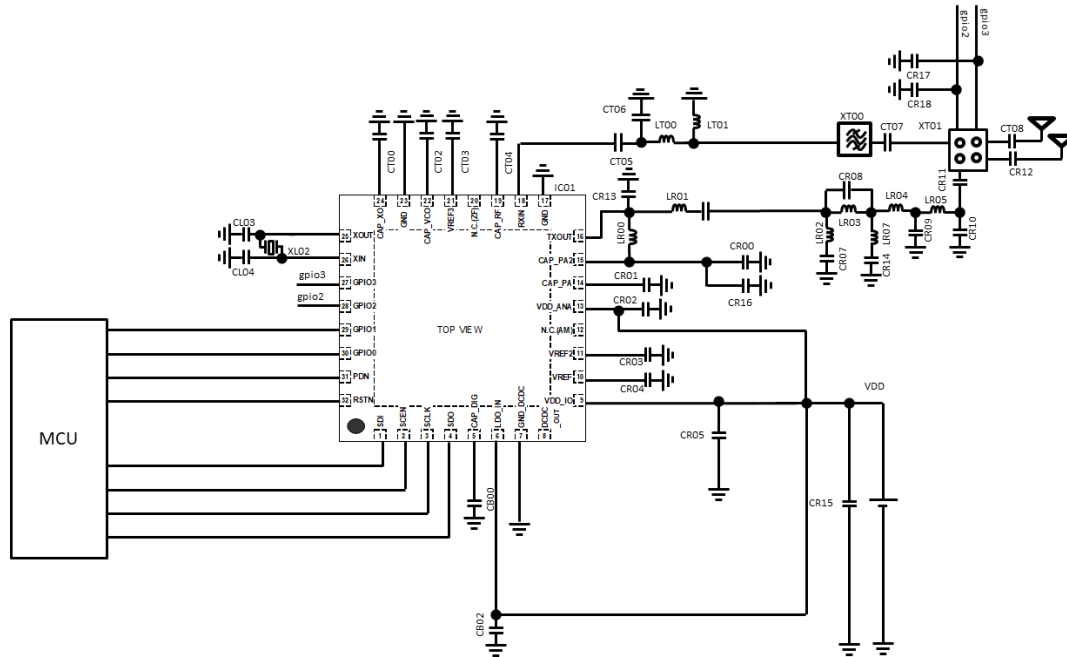
Common Transmission and Reception Configuration (Using Crystal Oscillator, Not Using Antenna switch)



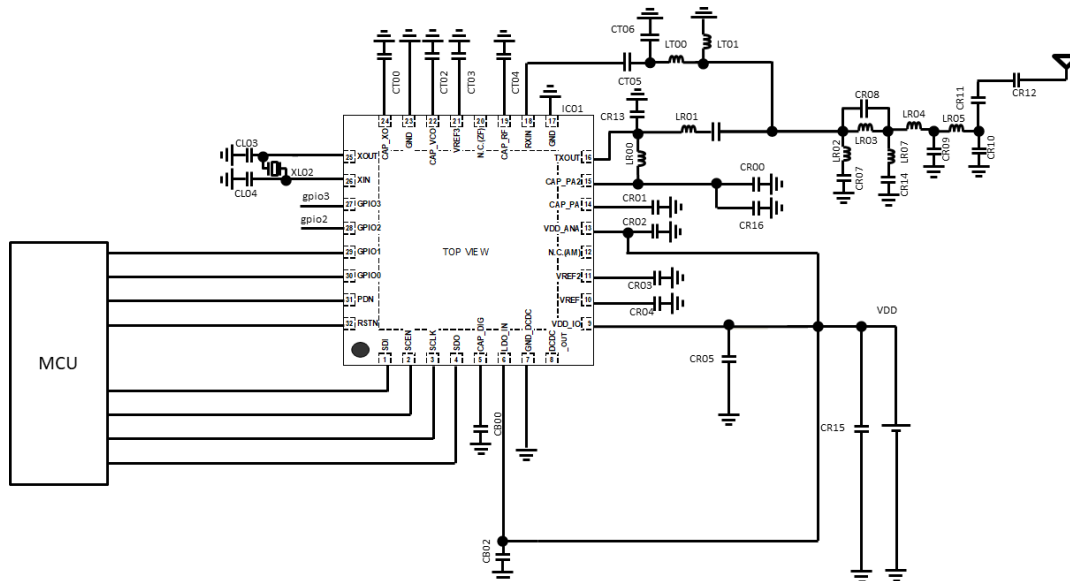
Separate Transmission and Reception Configuration (Using TCXO and Antenna switch)



Common Transmission and Reception Configuration (Using TCXO, Not Using Antenna switch)



Separate Transmission and Reception Configuration (Using Crystal Oscillator, Not using DCDC and Antenna switch)



Common Transmission and Reception Configuration (Using Crystal Oscillator, Not using DCDC, Not Using Antenna switch)

## ■Electrical Characteristics

### ●Absolute Maximum Ratings

Item	Pin name	Condition	Rating	Unit
Supply voltage	VDD_IO, VDD_ANA	-	-0.3 to +4.6	V
Ground voltage	GND	-	-0.3 to +0.3	V
Digital input voltage	PDN, SDI, SCEN, SCLK, GPIO0 to 3	-	-0.3 to +4.6	V
Digital output voltage	GPIO0 to 3, SDO	-	-0.3 to +4.6	V
High-level output current	GPIO0 to 3, SDO	-	-8.0 (*1)	mA
Low-level output current	GPIO0 to 3, SDO	-	8.0 (*1)	mA
Voltage to Analog pins 1	DCDC_OUT, LDO_IN, CAP_PA, CAP_PA2, VREF	-	-0.3 to +4.6	V
Voltage to Analog pins 2	CAP_VCO, CAP_RF, CAP_DIG, CAP_XO, XIN, XOUT, VREF2, VREF3	-	-0.3 to +2.0	V
RF input voltage	RXIN	-	-0.3 to +2.0	V
RF output voltage	TXOUT	-	-0.3 to +4.6	V
RF input level	-	Antenna end of board (50Ω)	0	dBm
Power dissipation	-	Ta= +25°C	3.45	W
Storage temperature	-	-	-55~+150	°C

\*1 The current flowing out of the LSI is specified as a minus sign.

Example: -1mA indicates that up to 1mA of current flows out of the LSI pin.

## ●Reference Operating Conditions

Item	Symbol	Condition	Min.	Typ.	Max.	Unit	
Power Supply Voltage (I/O, ANA)	VDDIO/ VDD_ANA	VDD_IO, VDD_ANA pin	When not using DCDC	1.8	3.3	3.6	V
			When using DCDC	2.6	3.3	3.6	V
Operating temperature	Ta	-	-40	+25	+105	°C	
Digital input Rising time	TIR	(*1)	-	-	20	ns	
Digital input Falingl time	TIF	(*1)	-	-	20	ns	
Digital output load	CDL	(*2)	-	-	20	pF	
Reference clock frequency	FREF	XIN/XOUT pin	24	24	26	MHz	
			48	48	52	MHz	
Reference clock accuracy	ACREF	-	(*3)	(*3)	(*3)	ppm	
X'tal equivalent series resistance	ESR	-	-	-	50	ohm	
TCXO input voltage	VTCXO	DC Cutoff *When TCXO option is selected	0.8	-	1.5	Vpp	
SPI clock input frequency	FSCLK	SCLK pin	0.032	2	16	MHz	
SPI clock input duty ratio	DSCLK	SCLK pin	45	50	55	%	
RF frequency	FRF	-	145	-	170	MHz	
			210	-	250	MHz	
			280	-	340	MHz	
			415	-	510	MHz	
			835	-	1020	MHz	

\*1 GPIO0, GPIO1, GPIO2, GPIO3, PDN, RSTN, SDI, SCEN, SCLK pin

\*2 GPIO0, GPIO1, GPIO2, GPIO3, SDO pin

\*3 The allowable frequency accuracy for transmission and reception are shown below.

In order to comply with various standards, please use the frequency accuracy according to the standards as shown in the table below.

Standard	Required frequency accuracy
ARIB STD-T108	±20 ppm
RCR STD-30 type III (Japanese)	±10 ppm
RCR STD-30 type IV (Japanese)	±4 ppm
Wireless M-Bus F mode	±16 ppm

## ●Power Consumption

FREF =48 MHz, DCDC:ON

Item	Symbol	Condition	Min.	Typ.	Max.	Unit	
Deep sleep current	I <sub>DD_DSLP</sub>	Deep sleep state (Not retaining Registers, all function halt)	-	0.1	50 (*1)	μA	
Sleep current	I <sub>DD_SLP</sub>	Sleep state (retaining registers, retaining RXFIFO)	-	0.45	120 (*2)	μA	
Idle current	I <sub>DD_IDL1</sub>	DCDC=ON	-	1.2	3	mA	
	I <sub>DD_IDL2</sub>	DCDC=OFF	-	1.8	6	mA	
Rx current	I <sub>DD420_RX1</sub>	420MHz band, 2-FSK, 4.8kbps	DCDC=ON	-	11	25	mA
	I <sub>DD420_RX2</sub>		DCDC=OFF	-	18	32	mA
	I <sub>DD920_RX1</sub>	920MHz band, 2-FSK, 100kbps	DCDC=ON	-	11	25	mA
	I <sub>DD920_RX2</sub>		DCDC=OFF	-	18	32	mA
Tx current	I <sub>DD420_TX1</sub>	420MHz band, 2-FSK, 4.8kbps, 10 dBm output	DCDC=ON	-	23	46	mA
	I <sub>DD420_TX2</sub>		DCDC=OFF	-	41	57	mA
	I <sub>DD920_TX1</sub>	920MHz band, 2-FSK, 100kbps, 13 dBm output	DCDC=ON	-	27	48	mA
	I <sub>DD920_TX2</sub>		DCDC=OFF	-	48	60	mA

(\*1) For reference, maximum 0.8uA at 25°C

(\*2) For reference, maximum 2.0uA at 25°C

## ●DC Characteristics

FREF =48MHz

Item	Symbol	Condition	Min.	Typ.	Max.	Unit
Voltage Input High	VIH	RSTN, PDN, SDI, SCLK, SCEN, GPIO0/1/2/3 pin	$V_{DDIO} \times 0.75$	-	$V_{DDIO}$	V
Voltage Input Low	VIL	RSTN, PDN, SDI, SCLK, SCEN, GPIO0/1/2/3 pin	0	-	$V_{DDIO} \times 0.18$	V
Schmitt Trigger Threshold High Level	VT+	RSTN, PDN, SDI, SCLK, SCEN, GPIO0/1/2/3 pin	-	1.2	$V_{DDIO} \times 0.75$	V
Schmitt Trigger Threshold Low Level	VT-	RSTN, PDN, SDI, SCLK, SCEN, GPIO0/1/2/3 pin	$V_{DDIO} \times 0.18$	0.8	-	V
Input leakage current	I <sub>IH</sub>	RSTN, PDN, SDI, SCLK, SCEN, GPIO0/1/2/3 pin	-1	-	1	μA
	I <sub>IL</sub>	RSTN, PDN, SDI, SCLK, SCEN, GPIO0/1/2/3 pin	-1	-	1	μA
Tri-state Output leakage current	IOZH	SDO, GPIO0/1/2/3 pin	-1	-	1	μA
	IOZL	SDO, GPIO0/1/2/3 pin	-1	-	1	μA
Voltage Output High	VOH	SDO, GPIO0/1/2/3 pin IOH=-2mA	$V_{DDIO} \times 0.8$	-	$V_{DDIO}$	V
Voltage Output Low	VOL	SDO, GPIO0/1/2/3 pin IOL=2mA	0	-	0.25	V
Pin capacitance	CIN	Input pins	-	6	-	pF
	COUT	Output pins	-	9	-	pF
	CRFIO	RF input pins	-	9	-	pF
	CAI	Analog input pins	-	9	-	pF

## ●RF Characteristics

Condition:

- Reference Schematic: Separate transmission and reception configuration (Using TCXO)
- Measurement point: Evaluation board antenna end (excluding loss of antenna switch and SAW filters)
- Modulation scheme: 2-FSK

### 【Transmission Characteristics】

420MHz Band, FREF =48 MHz, DCDC:ON

Item	Condition	Min.	Typ.	Max.	Unit
Tx output power	10mW (10dBm)	7	10	10.8	
Occupied bandwidth (99%)	99% power bandwidth, Pattern: PN9 Data rate: 4.8kbps Freq. deviation $\pm 2.4$ kHz, BT=0.5	-	-	8.5	kHz
Adjacent channel leakage power ratio [ACPR]	Data rate: 4.8kbps, Pattern: PN9 Freq. deviation: $\pm 2.4$ kHz, BT=0.5 Leakage power ratio in 12.5kHz offset $\pm 8.5$ kHz bandwidth	-	-	-40	dBc
Spurious emission level	At 10 dBm output Pattern: PN9 Data rate:4.8kbps Freq. deviation: $\pm 2.4$ kHz, BT=0.5 Integrated leakage power level in the range of 62.5kHz-162.5kHz offset from the carrier frequency	-	-	-26	dBm/100kHz
	Harmonic spurious level (2nd harmonic/3rd harmonic) At 10 dBm CW transmission ※When LC filter circuit is mounted		2nd 3rd <	- -36 -30	dBm

868MHz/920MHz Band, FREF =48 MHz, DCDC:ON

Item	Condition	Min.	Typ.	Max.	Unit	
Tx output power	20mW (13dBm)	9	13	15	dBm	
Occupied bandwidth (99%)	99% power bandwidth, Pattern: PN9 Data rate: 100 kbps Freq. deviation $\pm 50$ kHz, BT=0.5	150	-	200	kHz	
Adjacent channel leakage power ratio [ACPR]	Data rate: 100kbps, Pattern: PN9 13dBm output, Freq. deviation: $\pm 50$ kHz, BT=0.5 Leakage power ratio in 300kHz offset $\pm 100$ kHz bandwidth	-	-	-28	dBc	
Spurious emission level	At 13 dBm output Pattern: PN9 Data rate:100kbps Freq. deviation: $\pm 50$ kHz, BT=0.5	710MHz or below	-	-	-36	dBm/100kHz
		710-900MHz	-	-	-55	dBm/1MHz
		900-915MHz	-	-	-55	dBm/100kHz
		915-930MHz	-	-	-36	dBm/100kHz
		930-1000MHz	-	-	-55	dBm/100kHz
		1000-1215MHz	-	-	-45	dBm/1MHz
		1215MHz or more	-	-	-30	dBm/1MHz
	Harmonic spurious level (2nd harmonic/3rd harmonic) At 13 dBm CW transmission ※When LC filter circuit is mounted	-	-	-30	dBm	

## 【Receiver Characteristics】

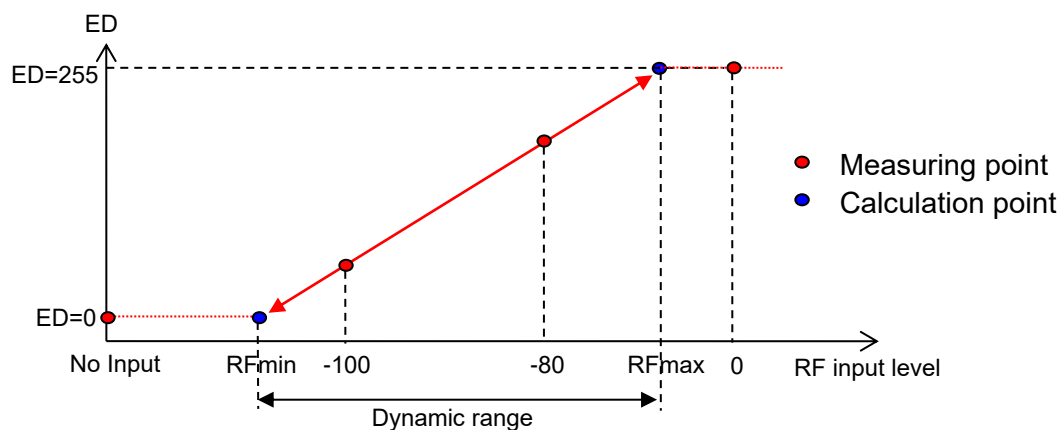
420MHz Band, FREF =48 MHz, DCDC:ON

Item	Condition	Min.	Typ.	Max.	Unit	
Min. receiver sensitivity	4.8kbps mode Center frequency: 426.25MHz BER<1% GFSK, Freq. deviation: ± 2.4kHz, BT=0.5	-	-120.5	-112.0	dBm	
Adjacent channel selectivity (*1)	Ta=25°C, 4.8kbps mode, Freq. deviation: ± 2.4kHz, GFSK, BT=0.5 Desired signal frequency: 426.25MHz Interference signal frequency: Desired signal ± 12.5kHz offset	30	33	-	dB	
Blocking (*1)	Ta=25°C, 4.8kbps mode Center-frequency: 426.25MHz Desired signal: GFSK, Freq. deviation: ± 2.4kHz, BT=0.5	Interference signal: CW 2MHz offset	-	73	-	dB
		Interference signal: CW 10MHz offset	-	82	-	dB
		Interference signal: CW -2*IF frequency offset, After IQ adjustment	30	50	-	dB
Min. energy detection level (ED value)	RFmin in ED characteristics diagram (*2) 4.8kbps mode Center frequency: 426.25MHz Channel filter band =10kHz setting	-	-115	-105	dBm	
Energy detection range	Dynamic range in ED characteristics diagram (*2) 4.8kbps mode Center frequency: 426.25MHz Channel filter band =10kHz setting	55	65	-	dB	
Spurious emission level		-	-	-54	dBm	

\*1. The Measuring condition for interference-related characteristics is as follows:

Set the desired signal as [the level with BER = 0.1% (= reference sensitivity) + 3 dB], change the interference signal level to find the level at which becomes BER = 0.1%, and stipulate as U/D [dB] = (interference signal level) - (desired signal input level).

\*2. ED characteristic diagram is shown below.



**ED Characteristic Diagram**

[Note]

The characteristics may be degraded when using channels near the multiplication of the reference clock or the multiplication of the reference clock divided by 2 or 4.

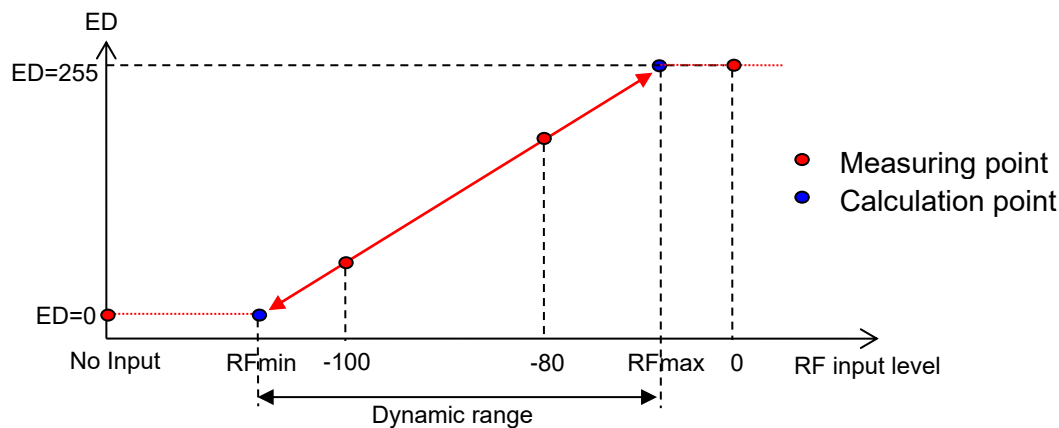
868MHz/920MHz Band, FREF =48 MHz, DCDC:ON

Item	Condition	Min.	Typ.	Max.	Unit	
Min. receiver sensitivity	100kbps mode Center frequency: 920.7MHz BER<0.1% GFSK, Freq. deviation: ± 50kHz, BT=0.5	-	-106	-97	dBm	
Adjacent channel selectivity (*1)	Ta=25°C, 100kbps mode Center frequency: 920.7MHz Desired signal: GFSK, Freq. deviation: ± 50kHz, BT=0.5	Interference signal: CW +400kHz offset	25	40	-	dB
		Interference signal: CW -400kHz offset	22	37	-	dB
Blocking (*1)	Ta=25°C, 100kbps mode Center frequency: 920.7MHz Desired signal: GFSK, Freq. deviation: ± 50kHz, BT=0.5	Interference signal: CW 2MHz offset	36	55	-	dB
		Interference signal: CW 10MHz offset	41	65	-	dB
Min. energy detection level (ED value)	RFmin in ED characteristics diagram (*2) 100kbps mode Center frequency: 920.7MHz Channel filter band =200kHz setting	-	-106	-100	dBm	
Energy detection range	Dynamic range in ED characteristics diagram (*2) 100kbps mode Center frequency: 920.7MHz Channel filter band =200kHz setting	55	65	-	dB	
Spurious emission level		-	-	-57	dBm	

\*1. The Measuring condition for interference-related characteristics is as follows:

Set the desired signal as [the level with BER = 0.1% (= reference sensitivity) + 3 dB], change the interference signal level to find the level at which becomes BER = 0.1%, and stipulate as U/D [dB] = (interference signal level) - (desired signal input level).

\*2. ED characteristic diagram is shown below.



**ED Characteristic Diagram**

[Note]

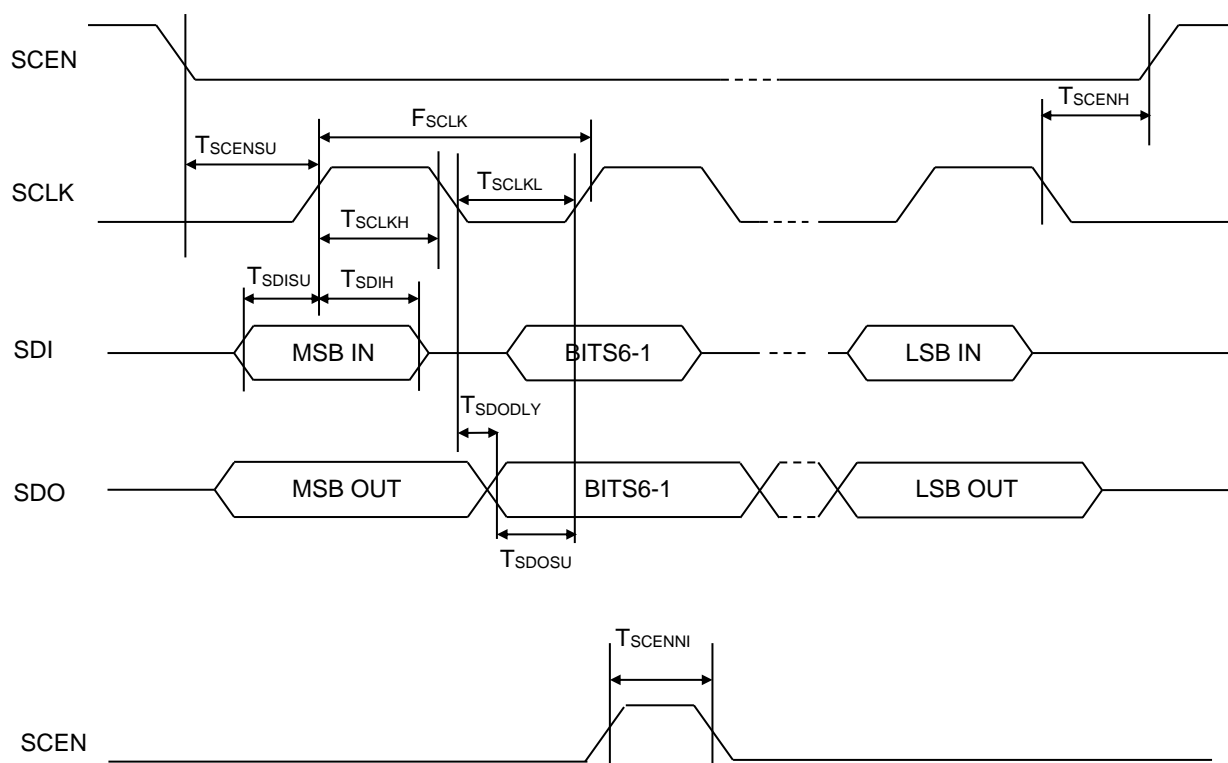
The characteristics may be degraded when using channels near the multiplication of the reference clock or the multiplication of the reference clock divided by 2 or 4.

## ●SPI Interface Characteristics

Item	Symbol	Condition	Min.	Typ.	Max.	Unit
SCLK clock frequency	$F_{SCLK}$	Load capacitance CL=20pF	0.032	2	16	MHz
SCEN input setup time	$T_{SCENSU}$		30	-	-	ns
SCEN input hold time	$T_{SCENH}$		30	-	-	ns
SCLK high pulse width	$T_{SCLKH}$		31	-	-	ns
SCLK low pulse width	$T_{SCLKL}$		31	-	-	ns
SDI input setup time	$T_{SDISU}$		5	-	-	ns
SDI input hold time	$T_{SDIH}$		15	-	-	ns
SCEN negate period	$T_{SCENNI}$		200	-	-	ns
SDO output delay time	$T_{SDODLY}$		-	-	25	ns
SDO output setup time	$T_{SDOSU}$		6	-	-	ns

[Note]

All timing measurement points are at VDDIO\* 20% and VDDIO\*80%.  
Please refer the required setup time of host MCU for SDO output.



## ●DIO Interface Characteristics

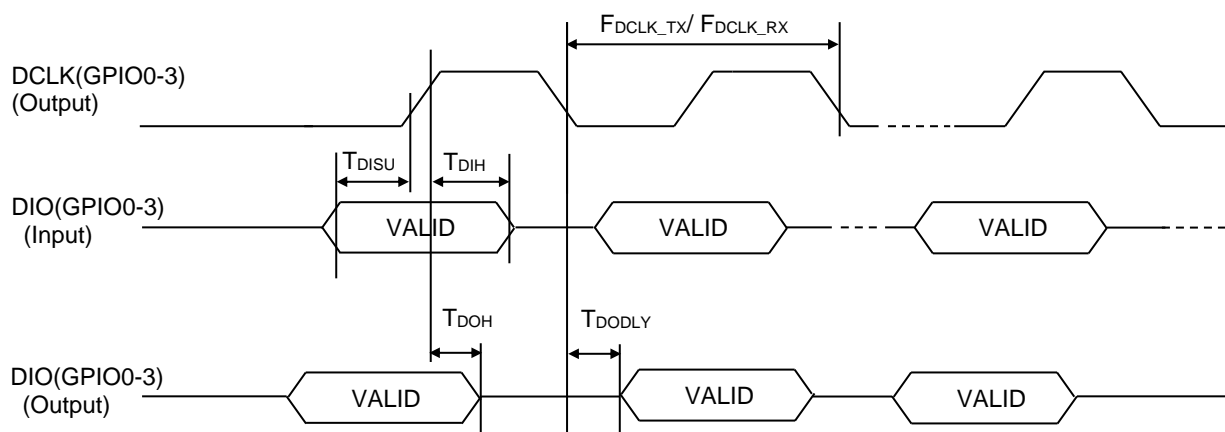
Item	Symbol	Condition	Min.	Typ.	Max.	Unit
DIO input setup time	$T_{DISU}$	Load capacitance CL=20pF	DataRate*1/4	-	-	$\mu\text{s}$
DIO input hold time	$T_{DIH}$		0	-	-	ns
DIO output delay time	$T_{DODLY}$		-	-	DataRate*1/10	$\mu\text{s}$
DIO output hold time	$T_{DOH}$		20	-	-	ns
DCLK frequency accuracy (*1) (TX)	$F_{DCLK\_TX}$		- Clock freq. deviation	-	+ Clock freq. deviation	kHz
DCLK frequency accuracy (*2) (RX)	$F_{DCLK\_RX}$		-30	-	+30	%
DCLK output duty ratio (TX)	$D_{DCLK\_TX}$		45	-	55	%
DCLK output duty ratio (RX)	$D_{DCLK\_RX}$		30	-	70	%

\*1 When no decimal point occurs in calculating the Tx data rate value, Max. and Min. values of Tx DCLK frequency are the reference clock frequency deviations.

\*2 Min. and max. of Rx DCLK frequency indicates the amount of jitter in the regenerated clock generated from the received signal (when synchronization is established).

[Note]

All timing measurement points are at  $V_{DDIO} * 20\%$  and  $V_{DDIO} * 80\%$ .



## ●Clock Output Characteristics

ML7406 has clock output function. The clock is output through GPIO1 pin as initialized setting.

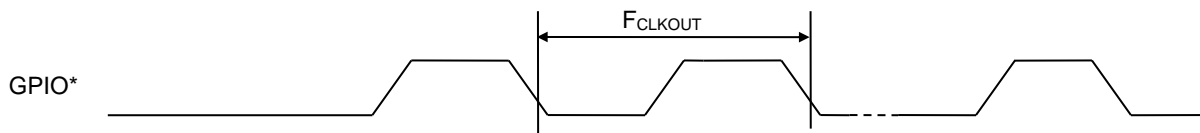
Item	Symbol	Condition		Min.	Typ.	Max.	Unit
Clock output frequency	$F_{CLKOUT}$	Load capacitance CL=20 pF		$FREF/8164$ (0.0059) (*2)	$FREF/740$ (0.0649) (*2)	$FREF/2$ (24) (*2)	MHz
Clock output duty ratio (*1)	$D_{CLKOUT}$	Load capacitance CL=20 pF	$FREF/2$ (24)	25	-	75	%
			$FREF/6$ (8) (*2)	33	-	67	%
			Except above	47	50	53	%

\*1 When set to  $FREF/2$ , the duty ratio is High:Low = 1:3. When set to  $FREF/6$ , the duty ratio is High:Low = 1:2 .

\*2 The values in parentheses are the values at  $FREF = 48MHz$ .

[Note]

All timing measurement points are at  $VDDIO * 20\%$  and  $VDDIO * 80\%$ .



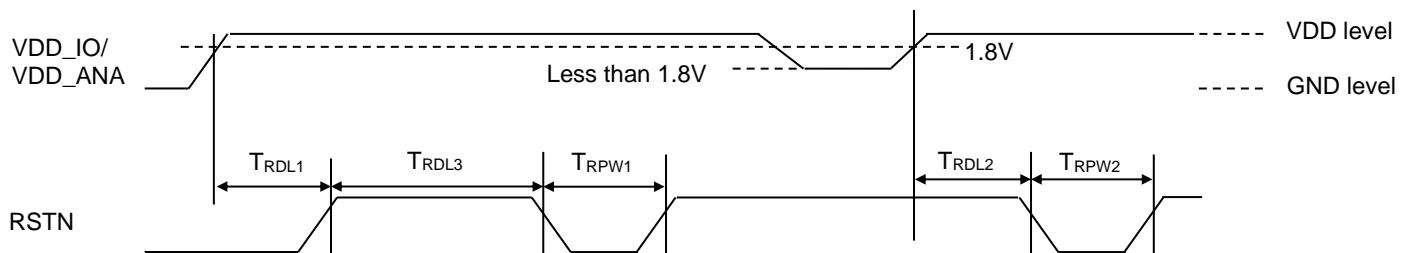
## ●Reset Characteristics

Item	Symbol	Condition	Min.	Typ.	Max.	Unit
RSTN release delay time (power on period)	$T_{RDL1}$	All power pins After Power On	1	-	-	ms
RSTN pulse period (when booting from VDD_IO/VDD_ANA = 0V)	$T_{RPW1}$		0.5	-	-	ms
RSTN pulse-time 2 (*1) (when booting from VDD_IO/VDD_ANA ≠ 0V)	$T_{RPW2}$		1	-	-	ms
RSTN input delay time	$T_{RDL2}$	After VDD_IO/VDD_ANA > 1.8	1	-	-	μs
RSTN input delay time after Power on (start from VDD_IO/VDD_ANA = 0V)	$T_{RDL3}$	From the rising edge of $T_{RDL1}$ to the falling edge of $T_{RPW1}$	100	-	-	μs

(\*1) When starting from VDD\_IO/VDD\_ANA ≠ 0V, input Low pulse to RSTN pin after VDD\_IO/VDD\_ANA exceeds 1.8V.

[Note]

All timing measurement points are at VDDIO\* 20% and VDDIO\*80%.

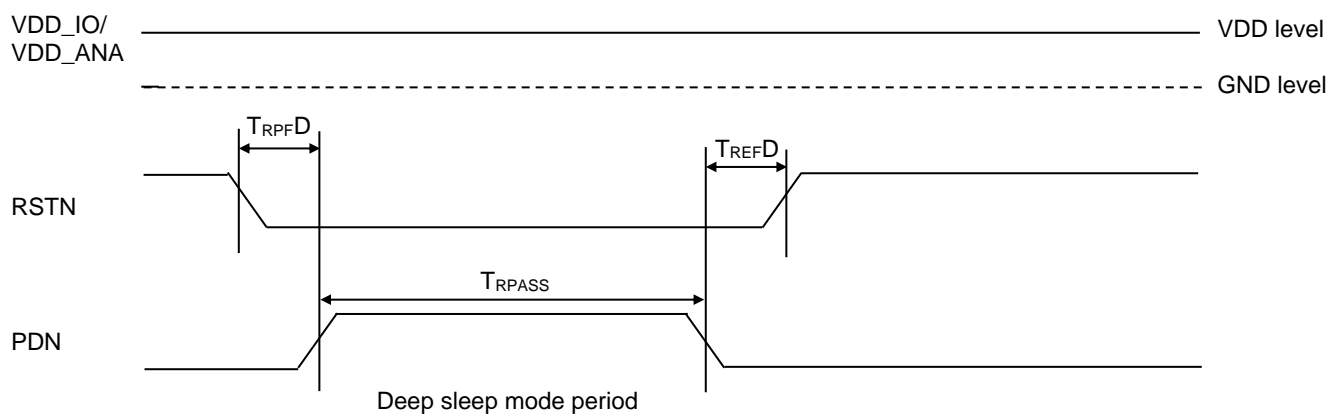


## ●Deep Sleep Mode Characteristics

Item	Symbol	Condition	Min.	Typ.	Max.	Unit
PDN rising edge delay time	$T_{RPF D}$	$VDD\_IO/VDD\_ANA = "H"$	10	-	-	ms
PDN assert time (Deep sleep mode period)	$T_{RPASS}$	$VDD\_IO/VDD\_ANA = "H"$	1.2	-	-	ms
RSTN release delay time	$T_{REFD}$	$VDD\_IO/VDD\_ANA = "H"$	1	-	-	ms

[Note]

All timing measurement points are at  $VDDIO * 20\%$  and  $VDDIO * 80\%$ .

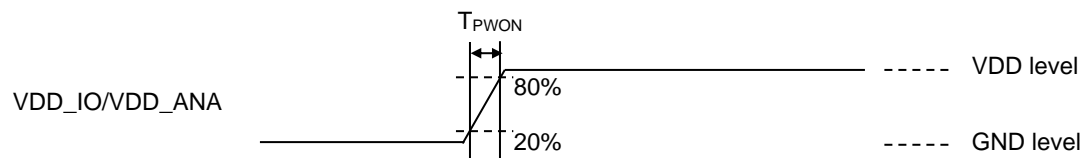


## ●Power-on Characteristics

Item	Symbol	Condition	Min.	Typ.	Max.	Unit
Power up time	$T_{PWON}$	Power on state (VDD_IO/VDD_ANA pin)	0.1	-	5	ms

[Note]

All timing measurement points are at VDDIO\* 20% and VDDIO\*80%.



## ■Revision History

Document No.	Issue Date	Page		Change Contents
		Previous Edition	Current Edition	
FEDL7425-01	2023/12/11	-	-	Initial release
FEDL7425-02	2024/03/19	1	1	Unify the names of radio stations and radio regulations
		7-8	7-9	Updating the reference circuit diagram and adding the common configuration circuit diagram
		12	13	Updating the maximum value of the power supply current characteristic
		22	23	Changed wording of Notes
FEDL7425-04	2025/10/6	1	1	Logo change (Lapis->ROHM)
		12	12	Power Consumption Added RX current for 400MHz band(IDD420_RX1/2) Added TX current for 400MHz band(IDD420_TX1/2)
		-	14	Added Transmission Characteristics for 400MHz band
		-	16	Added Receiver Characteristics for 400MHz band
		23	25-26	Notice is updated

# Notice

## Precaution on using ROHM Products

- 1) When using ROHM Products, refer to the latest product information and ensure that usage conditions (absolute maximum ratings<sup>\*1</sup>, recommended operating conditions, etc.) are within the ranges specified. ROHM disclaims any and all liability for any malfunctions, failure or accident arising out of or in connection with the use of ROHM Products outside of such usage conditions specified ranges, or without observing precautions. Even if it is used within such usage conditions specified ranges, semiconductors can break down and malfunction due to various factors. Therefore, in order to prevent personal injury, fire or the other damage from break down or malfunction of ROHM Products, please take safety at your own risk measures such as complying with the derating characteristics, implementing redundant and fire prevention designs, and utilizing backups and fail-safe procedures.

\*1: Absolute maximum ratings: a limit value that must not be exceeded even momentarily.

- 2) The Products specified in this document are not designed to be radiation tolerant.
- 3) Descriptions of circuits, software and other related information in this document are provided only to illustrate the standard operation of semiconductor products and application examples. You are fully responsible for the incorporation or any other use of the circuits, software, and information in the design of your product or system. And the peripheral conditions must be taken into account when designing circuits for mass production. ROHM disclaims any and all liability for any losses and damages incurred by you or third parties arising from the use of these circuits, software, and other related information.
- 4) No license, expressly or implied, is granted hereby under any intellectual property rights or other rights of ROHM or any third party with respect to ROHM Products or the information contained in this document (including but not limited to, the Product data, drawings, charts, programs, algorithms, and application examples, etc.). Therefore, ROHM shall have no responsibility whatsoever for any dispute, concerning such rights owned by third parties, arising out of the use of such technical information.
- 5) ROHM intends our Products to be used in a way indicated in this document. Please be sure to contact a ROHM sales office if you consider the use of our Products in different way from original use indicated in this document. For use of our Products in medical systems, please be sure to contact a ROHM representative and must obtain written agreement. Do not use our Products in applications which may directly cause injuries to human life, and which require extremely high reliability, such as aerospace equipment, nuclear power control systems, and submarine repeaters, etc. ROHM disclaims any and all liability for any losses and damages incurred by you or third parties arising by using the Product for purposes not intended by us without our prior written consent.
- 6) Please use the Products in accordance with any applicable environmental laws and regulations, such as the RoHS Directive. ROHM shall have no responsibility for any damages or losses resulting non-compliance with any applicable laws or regulations.
- 7) When providing our Products and technologies contained in this document to other countries, you must abide by the procedures and provisions stipulated in all applicable export laws and regulations, including without limitation the US Export Administration Regulations and the Foreign Exchange and Foreign Trade Act.
- 8) Please contact a ROHM sales office if you have any questions regarding the information contained in this document or ROHM's Products.
- 9) This document, in part or in whole, may not be reprinted or reproduced without prior consent of ROHM.

(Note) "ROHM" as used in this document means ROHM Co., Ltd.

## Other Precaution

- 1) All information contained in this document is subject to change for the purpose of improvement, etc. without any prior notice. Before purchasing or using ROHM Products, please confirm the latest information with a ROHM sales office.
- 2) ROHM has used reasonable care to ensure the accuracy of the information contained in this document, however, ROHM shall have no responsibility for any damages, expenses or losses arising from inaccuracy or errors of such information.